

Lampasas July 7<sup>th</sup> 1869

Hon Joseph Spence  
Austin 3

W<sup>th</sup> Sir,

Your favor of the 30<sup>th</sup> June ult. pointing out errors in certain field notes forwarded to the Land Office by me is received. I have carefully reviewed the notes of all the work and regret to find several mistakes which were made chiefly on account of getting my notes damaged and defaced, and having to write them partly from memory. On the adjacent page I have drawn a map correctly exhibiting the work as it was done and the old surveys as I found them. I began at the S. E. corner of the N. R. Bristol tract which I found plainly marked according to the notes. and first ran off the nine 640 acre surveys as marked on the map. at the S. E. corner of the <sup>2<sup>nd</sup></sup> survey I searched and found the N. W. corner of the J. J. Edwards tract plainly marked, its position as indicated by the lines and figures of the map. I ran Edwards West line and found the S. W. corner plainly marked. I also found J. Walker's N. W. & S. W. corners as indicated. I then ran off the two leagues and a 1280 exactly as indicated by my map and figures. The 1280 I have not forwarded being instructed by the owner to retain it for further orders. I am satisfied there is no error in any of this part of the work.

The S. Toby scrip was handed to me by Mr. James Coover of Houston and I presumed it was genuine, and surveyed it.

I have <sup>the</sup> records field notes of a survey for H. Curtis corresponding with the annexed sketch, and found the S. W. corner as indicated in my notes.

The small survey of J. H. Russell I found exactly as indicated. It is

a well improved place and valuable but I had no notes of it that I thought  
reliable and erroneously called it N<sup>o</sup> 27. I have erased the 27 from  
all my notes on record. The survey is there as I describe it and I have  
seen Mr. Russell who told me he had the Patent for it. It was unable to  
see the patent. My work around said tract is correct on the ground and  
may be relied on.

The Survey of John Byba I found without notes as the notes if  
if there were any in this office, they are lost. I treated it in my work  
as a 160 acre tract, but called through mistake 80 acres, which I  
have corrected on the record and send you herewith corrected  
copies of the same.

I also send copy of the corrected field notes of S.  
C. Douglass 1/3 League. Also of surveys 15 & 16 Comp 27/19

Please do me the favor to have the notes of the Daniel P  
West 1/3 League survey corrected as indicated by the figures on the  
annexed map.

I hope the above and foregoing will prove satisfactory  
as a corrected exhibit of all the work in question.

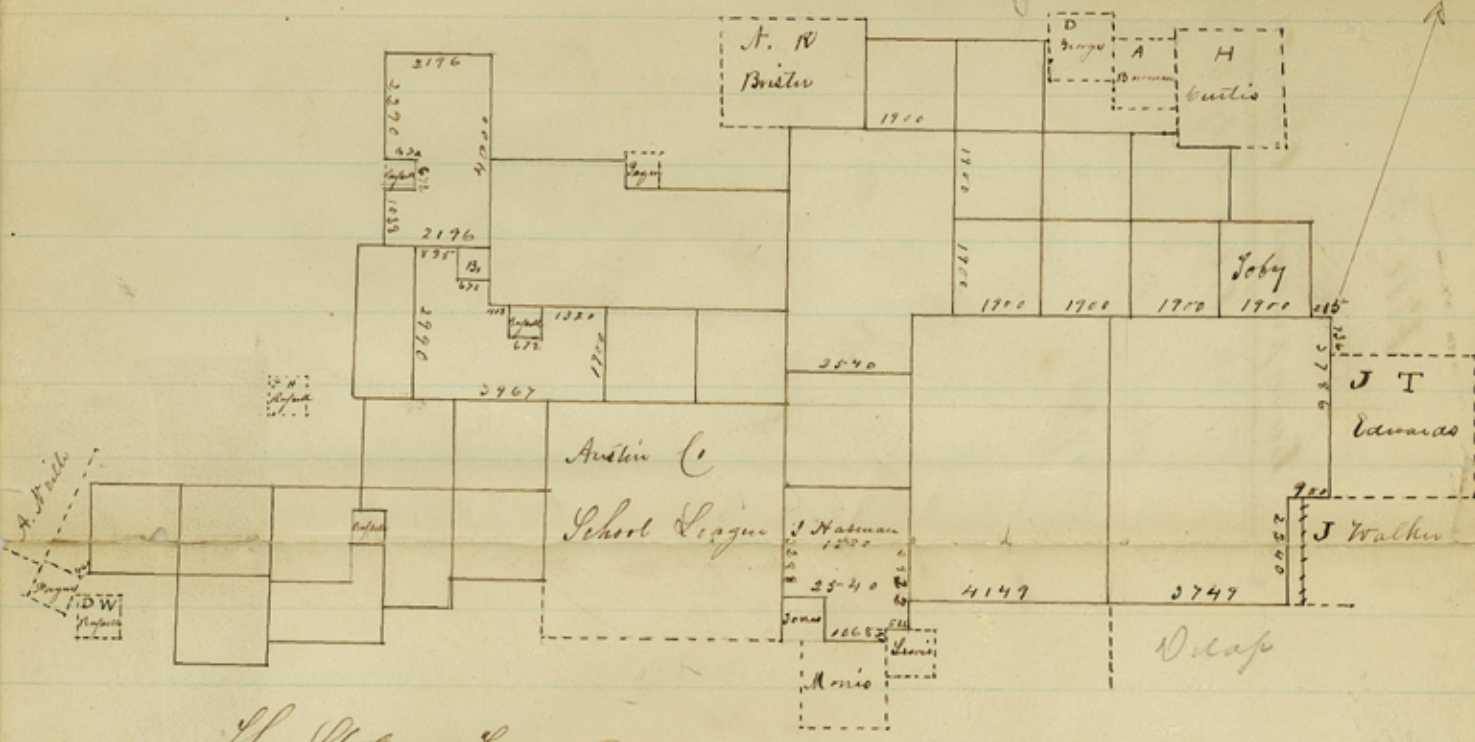
Respectfully  
Yours

H. C. Fountain

D. S. C.

P. S. There is no survey as the map indicates the small tract, isolated, in the name of  
J. H. Russell, I searched the whole vicinity for more than a mile around &  
am satisfied no survey was ever made there. H. C. F.

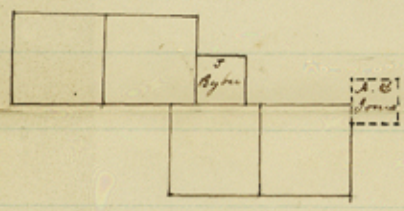
No 1



The State of Texas  
 County of Campasas

I hereby certify that the above map indicates correctly a series of work done by me in said County between Bennett's & Sims. Creeks the notes for which are now in the Genl Land Office. And that the small sketch No 2 is a correct showing of four surveys made by me on the South prong of School Creek of 640 acres each the notes of which are also in the Genl Land Office July 7<sup>th</sup> 1869.

No 2



W. C. Fountain Dep Suror  
 W. C.

File: 5.

Lampasas County

---

7/7/69. Filed July 17<sup>th</sup>/69.

about 17 miles  
N 17° W from Lampasas

county 29399