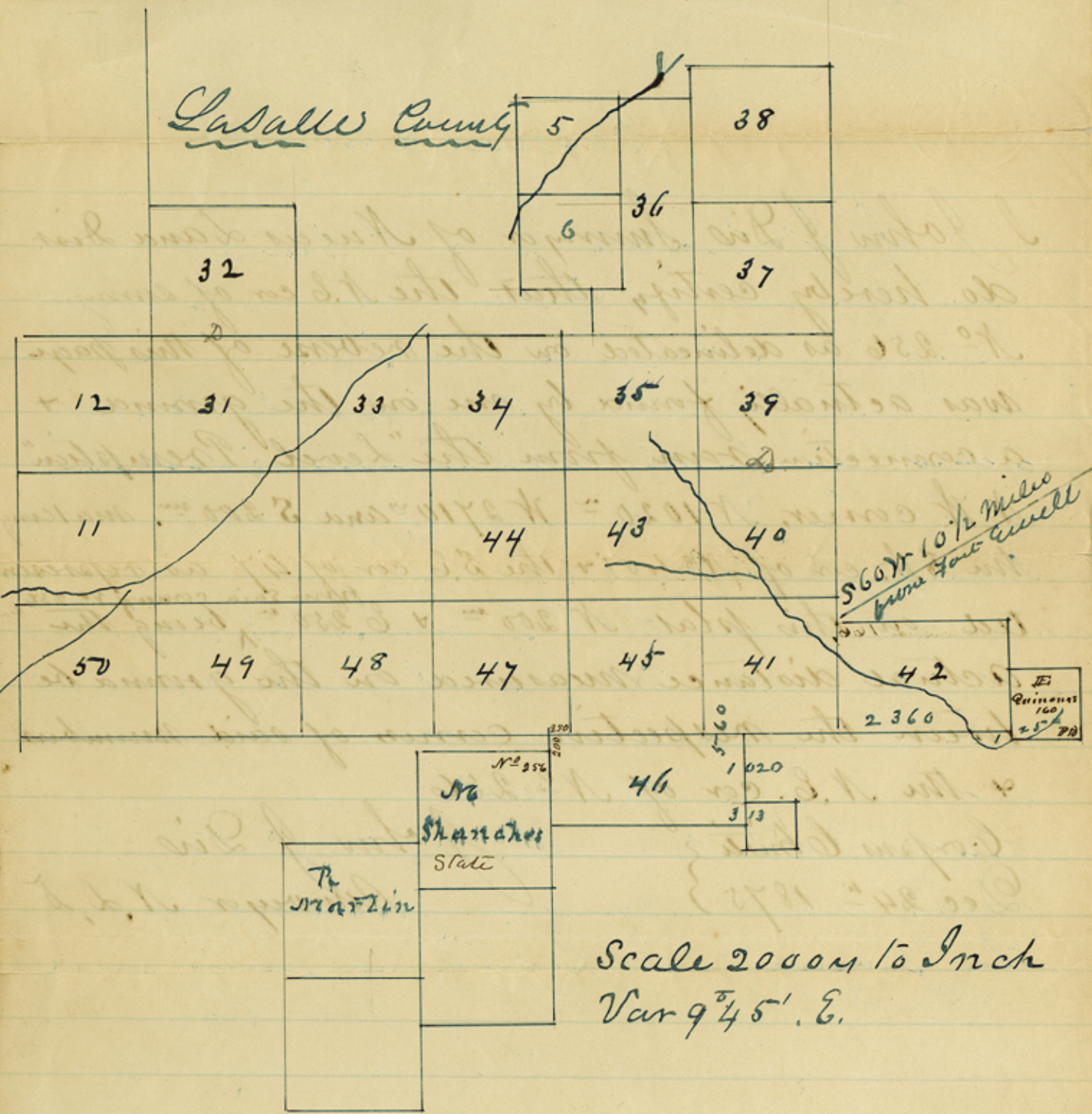


I John J. Dio Surveyor of Nueces Land Dist
do hereby certify that the N.E. cor of survey
N^o 256 as delineated on the reverse of this page
was actually found by me on the ground &
a connection ran from the "Level Preemption"
N.W. corner, N. 1020^m = W 2710^m and S 200^m, making
the S.W. cor of N^o 45 & the S.E. cor of 47 as represen
ted on this plat N 200^m & E 250^m ^{from said corner N^o 256} being the
actual distance measured on the ground be
tween the respective corners of said numbers
& the N.E. cor of N^o 256

Corpus Christi }
Dec 24th 1875 }

John J. Dio
Surveyor N. L. D.



Corpus Christi
24 Dec 1875

I Lt Suckett Deputy Surveyor of
Texas Land District do hereby
certify that from the SW corner
of Survey No 41. on the plat here attached
is South 1020 y and East 500 y
to the NW corner of presumption
Survey of P. M. Level found definitely on the ground
And numbered 166, From the SE corner of said No
41 is East 2310 y & South 125 y to
the SW corner of presumption
Survey of E. Quinones of 160 us:
That said courses and distances
were were actually run by me on
the ground and found as given above
The said corner of said presumption sur-
vey identified by this description in
this filed notice. The corner of No 41 I
made myself by section of subsp spread to
Bealy Sean & Forward contractors

Examined and adopted Dec 24th 1875
John J. Dix Surveyor
N. L. Dist
La Salle Co. St. File #6

counter 29454
Lt Suckett
Dep. Surveyor

File #
La Salle Co. 4.6

John J Dix cert. of Loca-
tion of #256.

Dec. 24. 1875.

Jan. 6. 1876.

Filed Jan. 6/76

Wm. J. Dix
Comt

All connections north as well
as south of survey W. 255 & 256
mentioned within contradict
this statement, & as they
nearly all agree with each
other, it is impossible to
adopt the within connection.
Other connections will be
necessary to explain this
discrepancy.

Febr. 26th 76

W. J. Langemann