

N^o. 7. and 8.
Lasalle C. #7

SW from Costilla
#3 of success R

Jacob Kuechler's SK
Filed June 16. 1876.

KK'

6/16/76.

L#

counter 29456

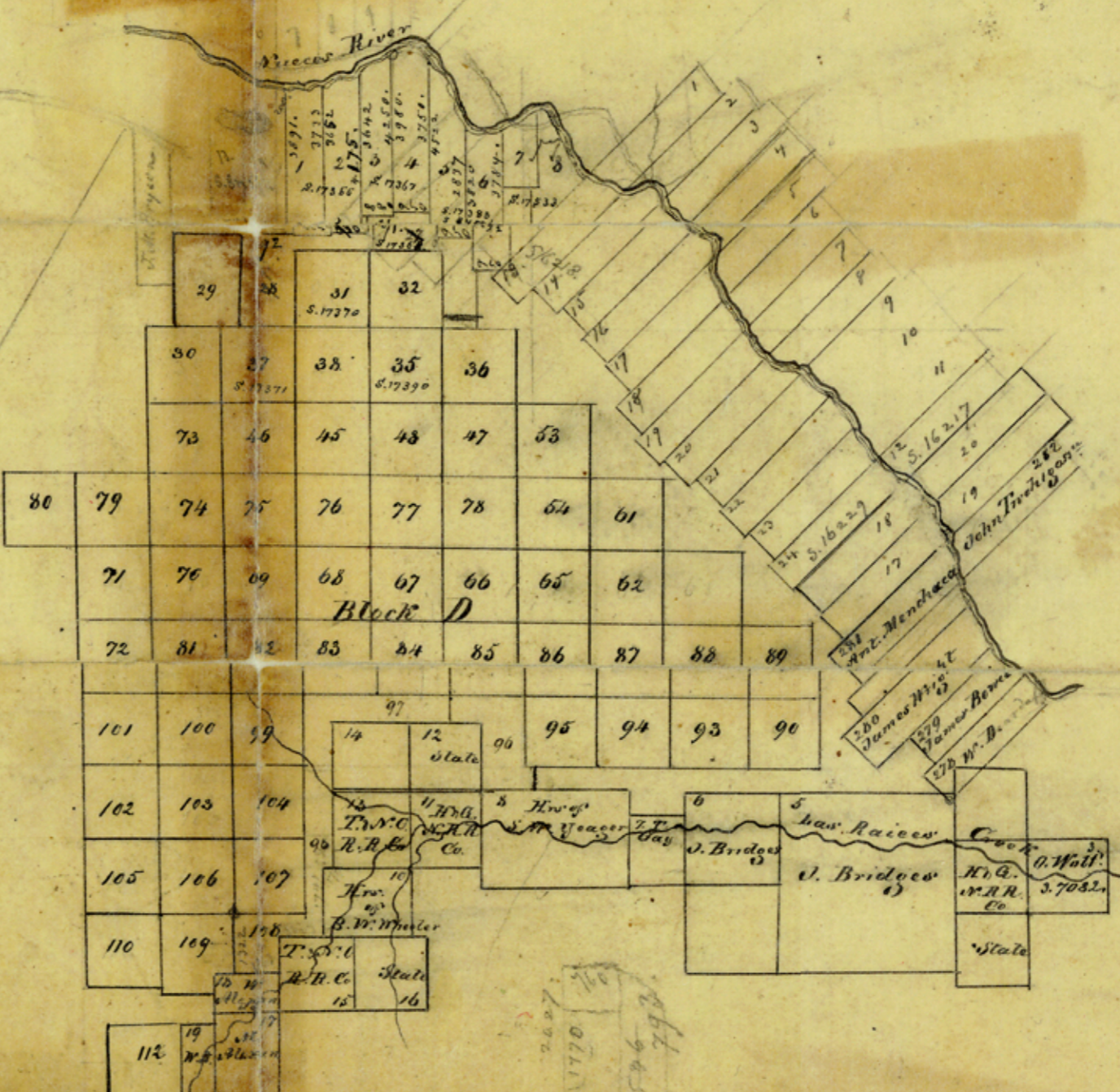
L#

L#

L#

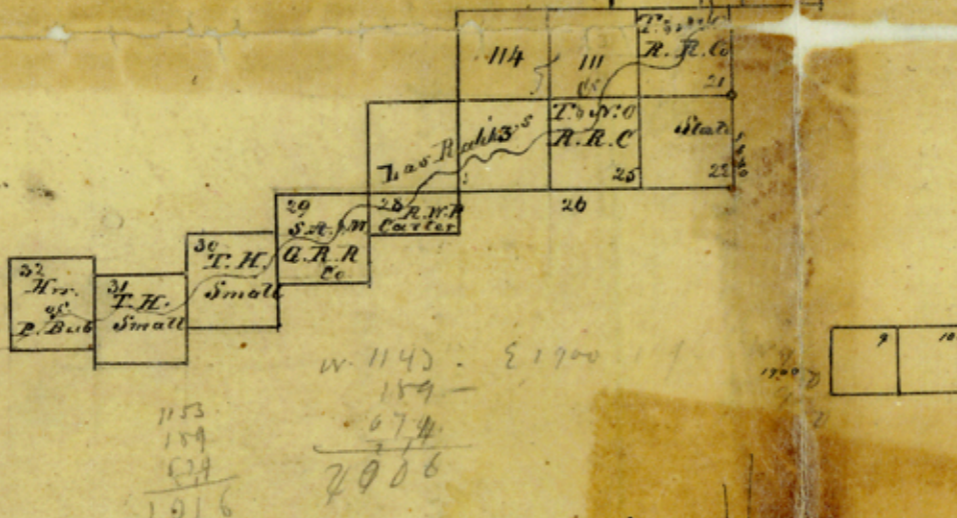
Gasalle County

N.E. cor. of survey No 4
469 ft. East and 210 ft. South
of the upper cor. of survey No 2
10 1/2 in the name of D.D. McArthur



Jacob Knechtel, Deputy Surveyor, Kansas District,
do hereby certify, that this sketch is a correct representation
of Block D as surveyed by me by actual survey on the
ground
Jacob Knechtel
Deputy Sur. Kansas District

Filed in Gen'l Office
June 16th 1876
Wm. C. Conner, Commr.



W. 114 1/2 - E 1700
154
674
2006

113
114
115
116
2016

1770
1770
1770
1770

KK