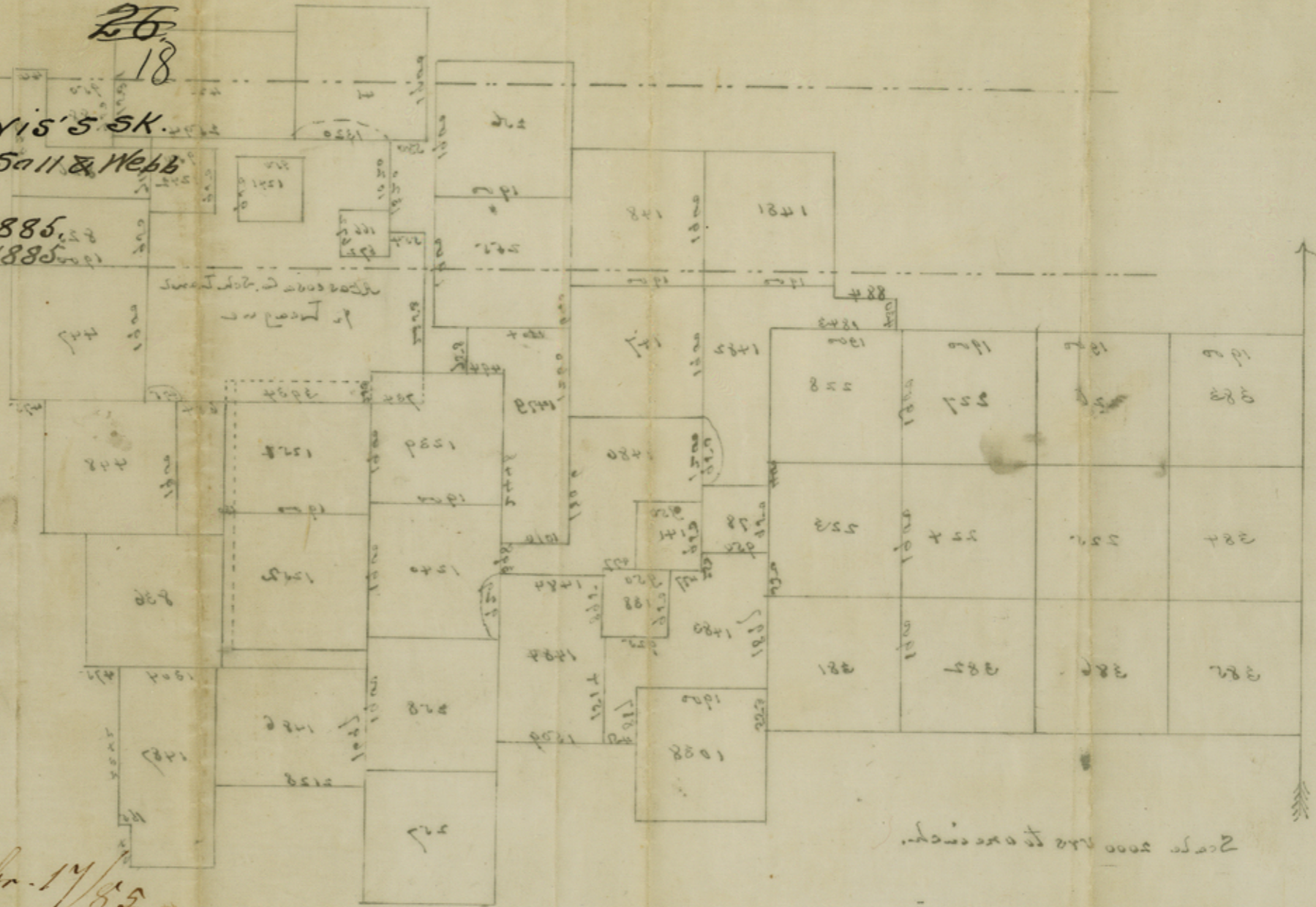


File 78.
 26
 18
 La Salle &
 Vincinal.

Saml. M. Jarvis's sk.
 of Surs. in La Salle & Webb
 Counties
 Dated Dec 14, 1885.
 Filed Dec 17, 1885.



Dec 14 1885
 Surveyor of Webb
 and District
 General Jarvis
 actually made on the ground
 in this office and the survey shown is
 true copy of the map of course of title
 & City Clerk's Office as a

Scale 2000 feet to an inch.

Filed Dec 17/85.
 D. N. Robinson
 Chief Clerk

counter 29508

counter 29507