

Liberty Co.

Rec^d Nov^r 8th 1858

Fieldnotes and Sketch
of two Surveys for
Pedro Bermea about
16 miles East of Liberty

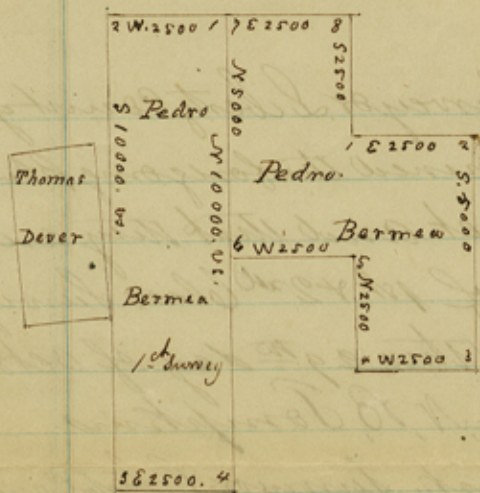
Mountain Co.

Mr. Martin
will see if these
are now free of conflict

Soc. Sec. No.	
611	
6-11-1919	7
3-4-1919	8
1920	0
Char. - Bull	
320	

Elgin

counter 29910



The State of Texas Survey No 8
 Liberty County
 Field notes of a survey of a
 League of land made for
 Pedro Bermea. Said League
 is situated about 5 miles west
 of Wolf Point in Liberty County
 on the south side of Pine Island
 Bayou.

Beginning 6400 Varas North and 2500 Varas East
 from the South East Corner of Thomas Dever's survey of one
 fourth of a League of land.

Thence West

2500 Varas corner in Prairie.

Thence South at 6400 Varas passed the SE
 Corner of said Dever's survey.

10,000 Varas. Corner in Prairie

Thence East.

2500 Varas. Corner in Prairie.

Thence North

10,000 Varas. to the place of beginning. Oct 27th 1858

J. H. Turner } Chain

A. N. B. Tompkins } Currier.

I, A. N. B. Tompkins District Surveyor Liberty County do hereby
 Certify that the foregoing survey was made according to
 law and that the limits boundaries and corners with
 the marks natural and artificial as truly described
 in the foregoing plat and field notes.

A. N. B. Tompkins

District Surveyor Liberty County

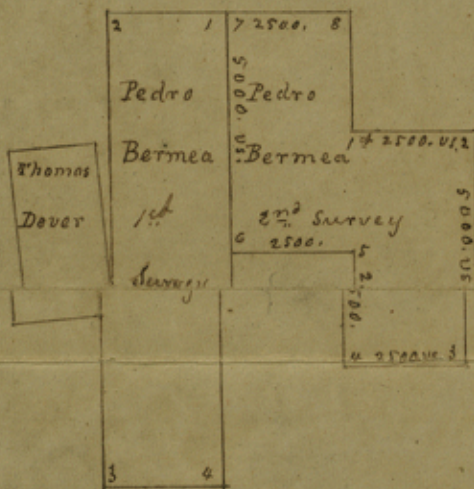
J. A. N. B. Tompkins District Surveyor Liberty County do
 hereby Certify that I have examined the foregoing plat and
 field notes and find them correct and that they are recorded
 in my office in Book D. of 1st & 2nd Class Surveys page
 56. Given under my hand this 29th day of October
 1858.
 J. A. N. B. Tompkins
 (Dist. Surveyor Liberty County)

John A. Tompkins

File 18 Liberty Co

Lib Dist file 13

R. for 3 over paid



The State of Texas } Survey No. 2
 Liberty County } 37.

Field notes of a survey of a League of
 Land made for Pedro Bermea.

Situated in Liberty County in the prairie
 about 3 1/2 miles west of Wolf Point

Beginning 2500 varas South and
 2500 varas East of the N.E. corner
 of another League of land surveyed
 for Pedro Bermea - in Prairie
 Thence East 2500 varas corner in

prairie. Thence South 5000 varas. Corner in Prairie. Thence West
 2500 varas. Corner in Prairie. Thence North 2500. varas. Corner
 in Prairie. Thence West. 2500 varas intersected the East line
 of Pedro Bermea's Survey. Corner in prairie. Thence North with
 said line 5000 varas to his N.E. corner. Thence East 2500
 varas corner in prairie. Thence South 2500 varas to the
 place of Beginning - Oct 27th 1858.

A. N. B. Tompkins
 J. C. Turner

I, A. N. B. Tompkins, District Surveyor Liberty County
 do hereby Certify that the foregoing survey was made according
 to law and that the limits, boundaries and corners with
 the marks natural and artificial are truly described in
 the foregoing plat and field notes.

A. N. B. Tompkins
 District Surveyor Liberty County

I, A. N. B. Tompkins, District Surveyor Liberty County do hereby Certify that
 I have examined the foregoing plat and field notes and find them correct
 and that they are recorded in my office in Book D of 1st & 2nd
 Class Surveys page 57. Given under my hand this 29th day of
 October 1858.

A. N. B. Tompkins
 District Surveyor Liberty County

M. Wile 13 Liberty Co
Pedro Besmea
field notes
— — —

Lib Co Sk File
13

R fee 3.00 paid

counter 29914