



State of Texas } Field Notes
 Liberty County } of a half League and
 one Labor of Land made for A B
 Sanford it being a resurvey of the Robert
 Wiseman survey situated in Liberty County
 Texas on Old River a tributary of the Trinity River
 about 10 miles S 10° W from the City of Liberty
 Beginning at a stake on the East Bank of Old River from
 which a Cypress 18 in dia old X on it has S 15 1/2° W 8 on a
 Pine 20 dia has N 84 1/4° E 3 1/2 on. Thence up Old River
 with the meanders thereof as follows, N 57° W 100 on
 N 54° W 70 on N 80° W 100 S 56° W 80 S 33° W 130 S 15° W 170 S 19° E 130 S 63° E
 170 S 82° E 90 S 27° W 90 S 48° W 50 S 60° W 60 West 40 N 68° W 40 N 37° W
 40 N 21° W 120 N 35° W 280 N 67° W 80 N 70° W 90 N 30° W 70 N 24° E 80 N 37° W
 50 North 60. N 35° W 55 N 70° W 100 N 77° W 100 S 70° W 70 West 50
 N 56° W 60 N 31° W 40 N 21° W 50 N 36° W 80 N 63° W 60 N 59° W 40 N 18° W 50
 N 8° W 40 N 21° E 35 N 54° E 40 N 59° E 50 N 76° E 50 N 69° E 50 S 63° E
 30 S 44° E 30 S 63° E 30 S 88° E 40 N 34° E 40 S 7° W 65 N 49° E 40
 N 80° E 70 N 43° E 20 N 30° E 20 N 12° W 80 N 15° E 50 N 79° E
 55 N 34° E 80 N 40° W 110 N 45° W 150 N 70° W 100 N 82° E 70
 N 14° E 90 S 14° E 40 N 40° E 40 N 18° E 100 N 53° W 90
 N 54° E 110 N 6° W 90 N 21° W 60 N 80° W 50 S 15° W 30 N 62° W
 60 West 40 N 73° W 50 N 19° W 60 N 43° E 45 N 20° W 60
 S 84° W 140 N 77° W 100 N 11° W 60 N 35° E 220 N 81° E 90
 N 12° E 60 N 58° W 50 N 29° W 110 S 79° W 70 N 39° W 90

counter
30061

Robt. Wiseman Survey

Sketch Files

Liberty Co. ~~30~~ "AX"

Filed in G.L. Office
July 21/96

See also State Surveys
Sketch No. 36

In 2 50 ①

W.S. Jones' FN & SK. of the Robt
Wiseman's Sur.

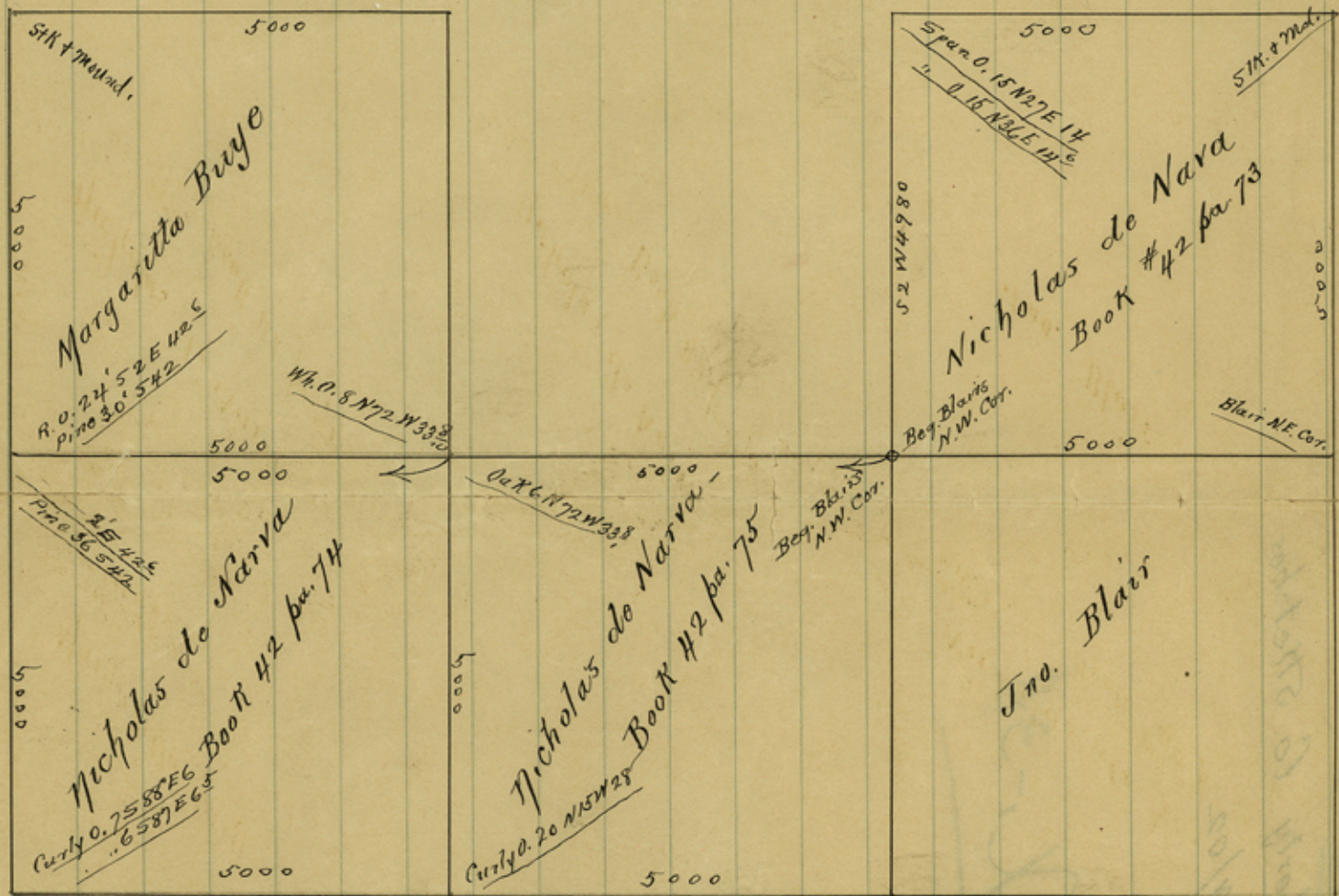
number 30062

N32°W 170 N31°E 70 N11°E 90 N51°E 100 N10°W 70 N71°W 70
 N25°W 110 N47°E 50 N71°E 50 N37°E 100 N67°E 60 N10°E 110
 N65°W 130 N12°W 50 N80°E 60 N74°E 60 N61°E 90 N11°E 80
 N35°W 70 N29°E 70 N58°W 50 N27°W 170 N71°W 70 S65°W 145
 N28°W 60 N5°E 80 N44°W 120 N24°E 70 N43°W 130 S85°W 150
 N58°40 S23°W 100 N76°W 90 N18°W 90 N15°E 160 N60°W 430
 N14°E 70 N31°E 90 N5°E 130 N45°E 50 N24°W 130 N58°W
 40 S83°W 110 N66°W 170 N51°W 70 N82°W 70 N24°W
 130 N58°W 40 S83°W 110 N66°W 170 N57°W 70 N82°W
 70 N34°W 80 North 120 N43°E 75 N12°W 75 N60°W
 270 N8°E 70 N28°W 240 N80°E 90 N66°E 170 N36°E
 220 N30°E 160 North 80 N31°E 100 N20°W 100

N41°E 60 N19°E 110 to the corner a cypress stump
 with old marks on it for the North west
 corner of this survey from which a forked
 ash 20 in dia vs S26°W 16 varas an ash
 vs S53°W 20 3/10 vs both trees have old marks
 and are evidently pointers for the Welch survey
 I made a new bearing of a Pin Oak N62°E
 20 4/10 vs, Thence N60° East at 548 1/2 varas
 made a cor for a 100 acre tract out of this survey
 at 740 vs a small island of large Post Oaks
 and through the middle of same at 1370
 a stake for cor in Parais, Thence East
 at about 400 vs timber 575 crop head of
 Caney Bayou 1420 vs stake for corner from
 which a hum 12 in dia vs S54 1/2°W 19 5/10 tripple
 hum vs N84 1/2°E 8 5/10 vs, Thence South 1190
 Caney Bayou at 6925 vs the beginning

Survey of 11 to 16 May 1896. Col Abram } Chain
 Variation 8° East Frank Jackson } men
 I W S Jones Surveyor do hereby certify that
 the foregoing described survey was actually
 made by me on the ground according to sale
 on the dates and with the chain men aforesaid
 and that all the corners lines Boundaries and
 marks of the same whether natural or
 artificial are truly and correctly described
 and set forth in the foregoing Plat and field notes
 W S Jones Surveyor
 counter 30063

F



Draftsmans sketch
 Liberty Co. 3/29/02
 Copied fr. SK. sent to this Office
 the same not official

12
13
14
15
16
17
18
19
20
21
22
23
24
25
26
27
28
29
30
31
32

Liberty Co. 5 Hatches
3/29/02

~~AX-38~~
Liberty Co. 5 Hatches
3/29/02

~~AX-38~~

counter 30065