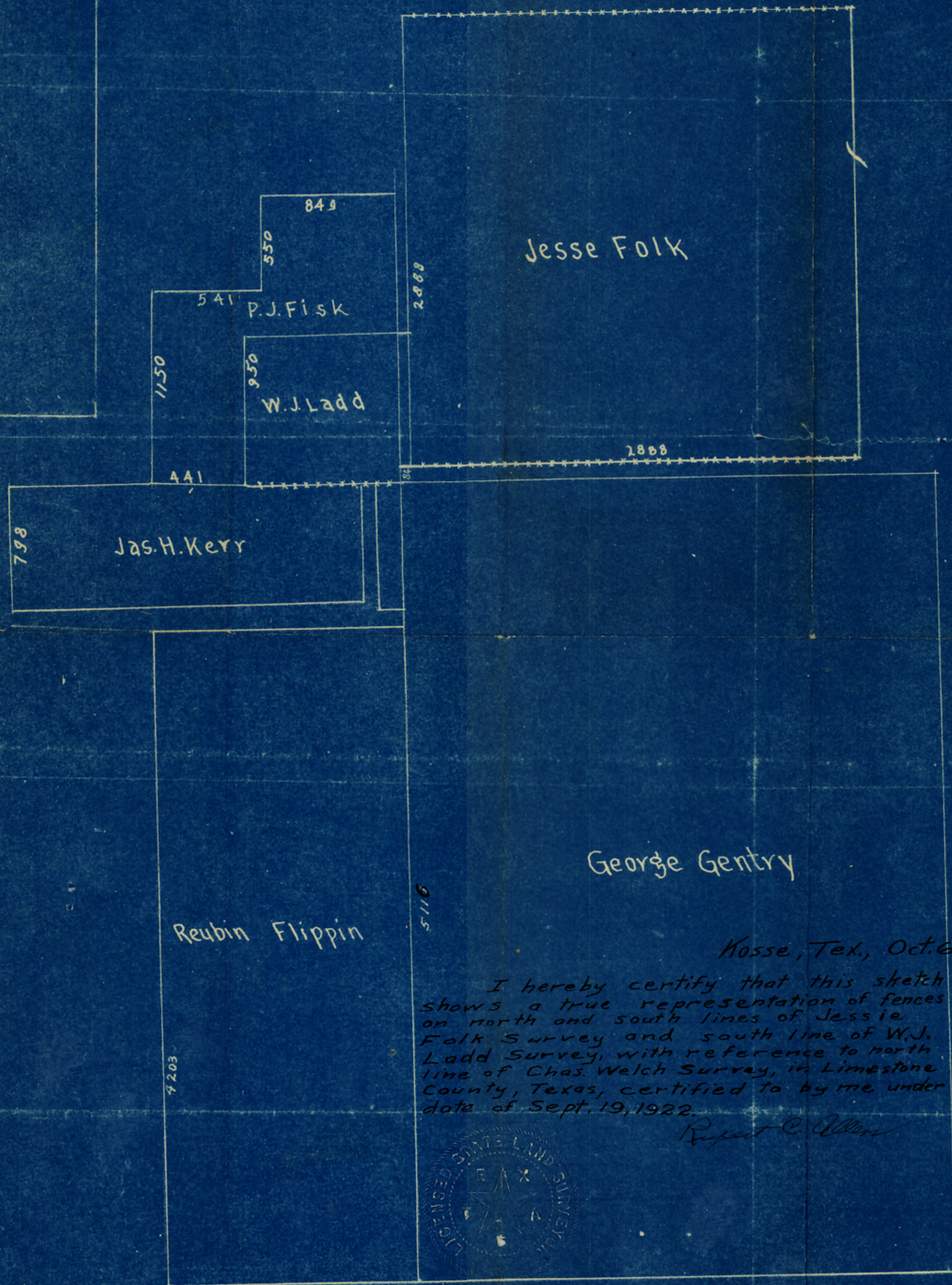




21
Limestone Co
Cert. Rupert C Allen, in
re, to location of Jesse
Folk Sur
Dated Sep 19, 1922.
Filed Oct. 9, 1922



Kosse, Tex., Oct. 6, 1922.

I hereby certify that this sketch shows a true representation of fences on north and south lines of Jesse Folk Survey and south line of W.J. Ladd Survey, with reference to north line of Chas. Welch Survey, in Limestone County, Texas, certified to by me under date of Sept. 19, 1922.

Reuben C. Allen



Filed in General Land Office
October 9th 1922.

*J. P. Robinson, Comr.,
J. C. Clark, clk.*

number 30,200