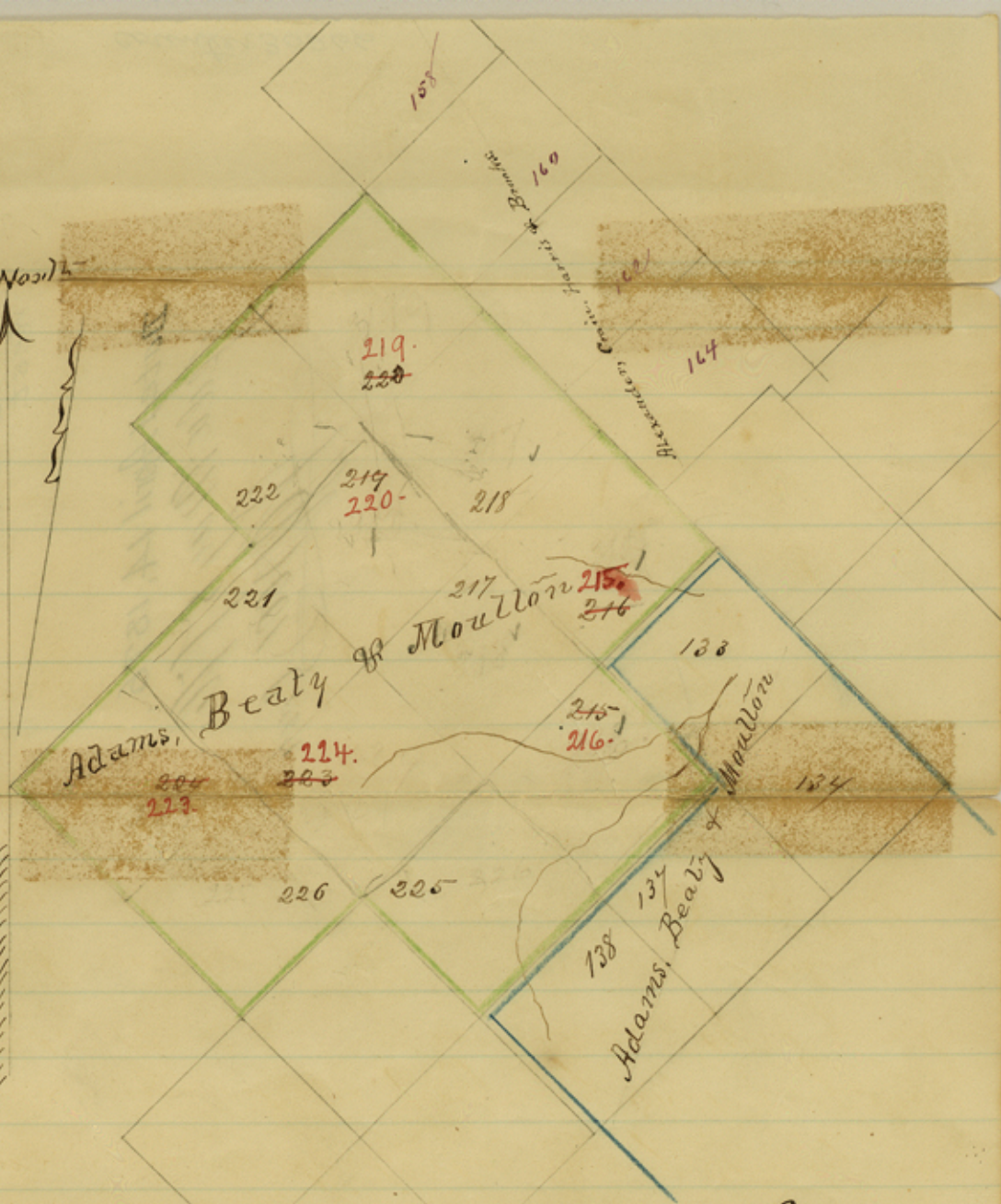


Scale 2000 on for each  
 Vertical 9° East

North



State of Texas  
 District of Lincoln  
 I R H. Brown Dist.

Surveyor, Lincoln Dist. do hereby certify that  
 I have examined the foregoing sketch of Survey  
 No. 215 to 22 inclusive and find  
 same correct and it is recorded  
 in my Office in Book L. S. N<sup>o</sup> 2  
 on page 261.

Given under my hand  
 at Oakville the 14<sup>th</sup> day of Feb'y 1876  
 R. H. Brown  
 Dist. Sur. L. O. Dist.



File 11<sup>a</sup> 44a  
Live Oak Co. 11<sup>a</sup>

RH Brown's SK. of Surs.  
about 15 mi. S 50° W. of Geo.  
West.

Dated April 14, 1876.  
Jude May 8<sup>th</sup> 1876.  
J. J. [Signature]

counter 30366

*[Faint, mostly illegible handwriting in cursive script, possibly bleed-through from the reverse side of the page.]*