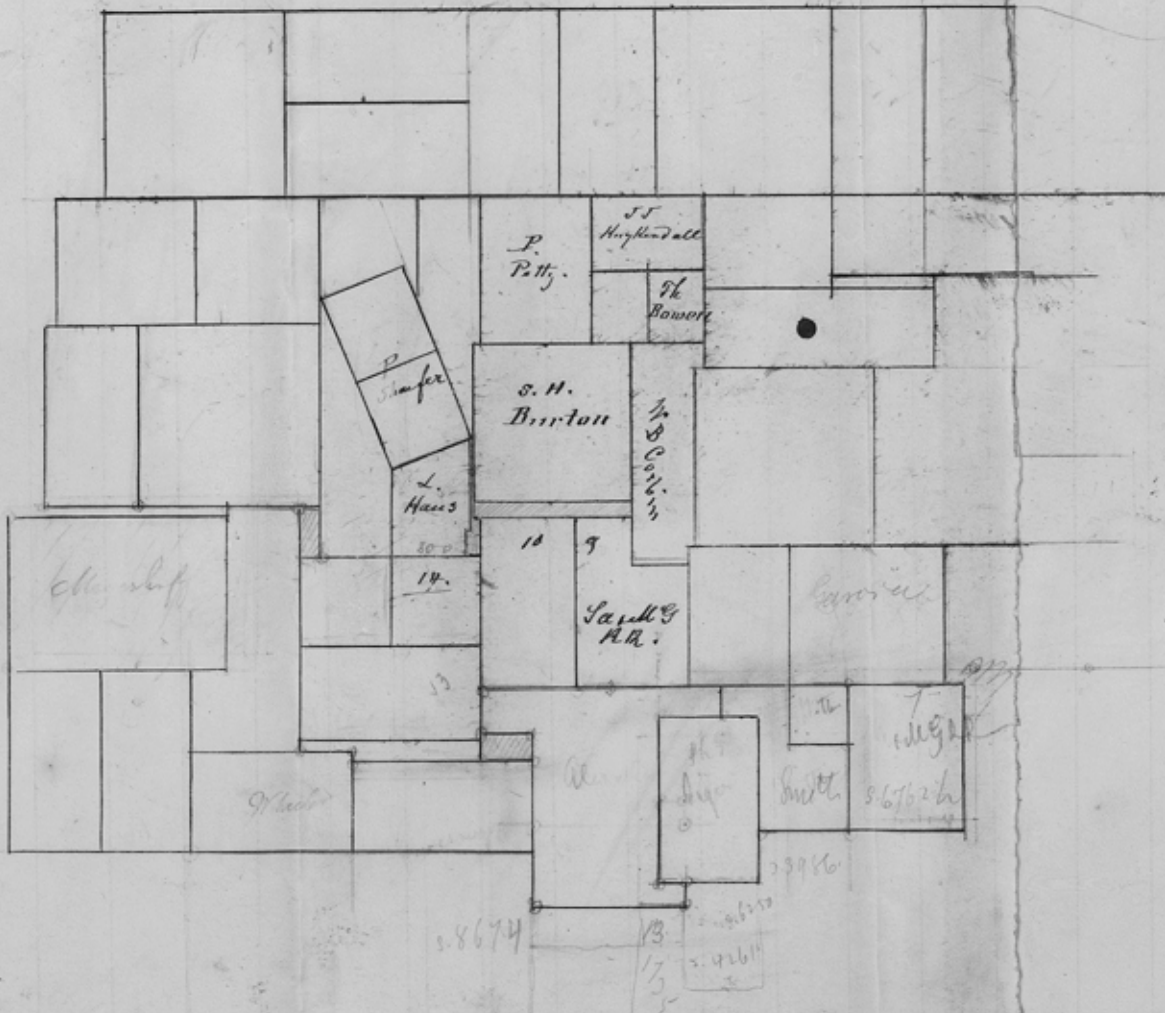


Ltano Co N.W. of Libano town



Lland Texas,
Oct^r 2nd, 1874,

Com^{rs} Gen^l Land Office.
Austin, Texas.

Sir,
Accompanying the field notes
of surveys made for Adams &
Stidham you will find a true
sketch of surrounding surveys as
they actually are on the ground.
The map shows Thos^s Sims' survey
to conflict with N^o 698 granted to
the B. B. B. & C. R. R. Co. when in fact
there exists a mile between them, for
I found the Big cor. of said sur. as
described in field notes, then measured
the distance the W. Bdy. called for and
established the N. W. cor. (the call being
for etc & ma)

A. Chiles survey is made to cover
most of the Thos^s Bedford sur, the said
Bedford having never lived on the same - The

With accompanying this survey you will somewhat different from which the Map of County represents, however it is a true one, the lines & corners being found as I represented by said sketch to which I hereby certify,

Food 7/34

D. C. Cowan,
G. S. L. Co.,
By R. D. Rowntree,
Spec. Depty.

File 752-3
By or in assumption
of D. C. Cowan
Letter of E. J. Flanahan
Dated Oct. 7, 1874.

file Oct 7. 1874

J. W. M. Co.

Llano Co