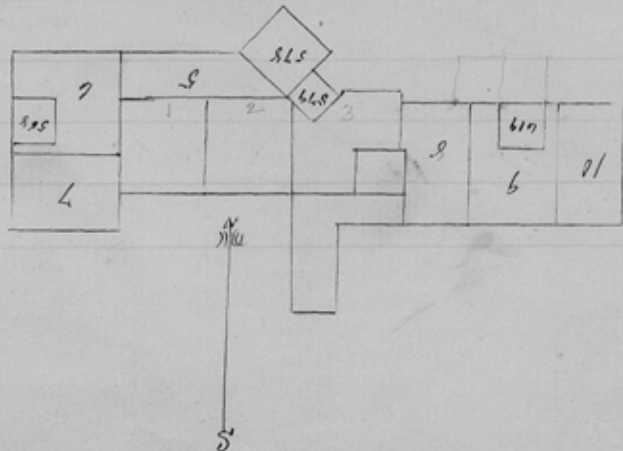


J. D. Cowan, County Surveyor of Llano County
do hereby certify, that the sketch below correctly repre-
sents the several surveys as they are on the ground,
and that there is no conflict with any of the surround-
ing surveys.

Giving at Austin May 6/1869.

D. C. Cowan County
Surveyor Llano County



1185

1226

1492.

File: 4

Llano - Co.

About 11 miles N20° E
from Llano Town.

J C Coxan's SK & Explanation
dated May 6, 1869.

counter 30354

5665

41517300
45660
000
180
000

3614

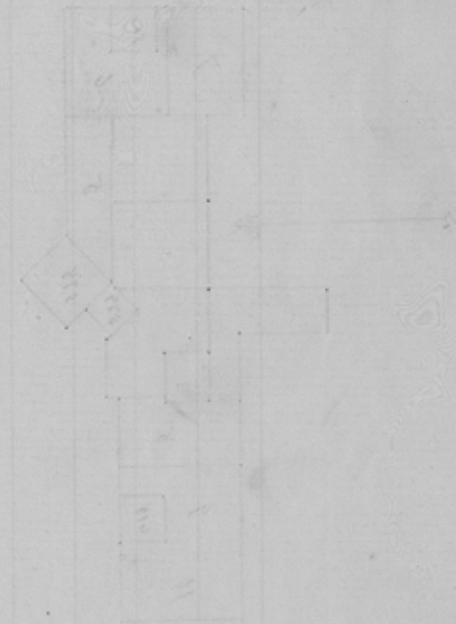
903500

0057

1407

049

[Faint, mostly illegible handwritten notes and bleed-through from the reverse side of the page.]



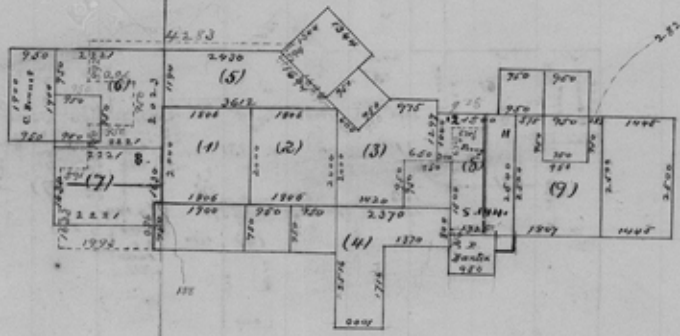
North

2	2	2	1
2	4	3	0
4	6	5	1

450
800
1750
300
1200

950
575
375
1500
1125

Counter 30355



Genl. I. d. Office
July 5th 1875