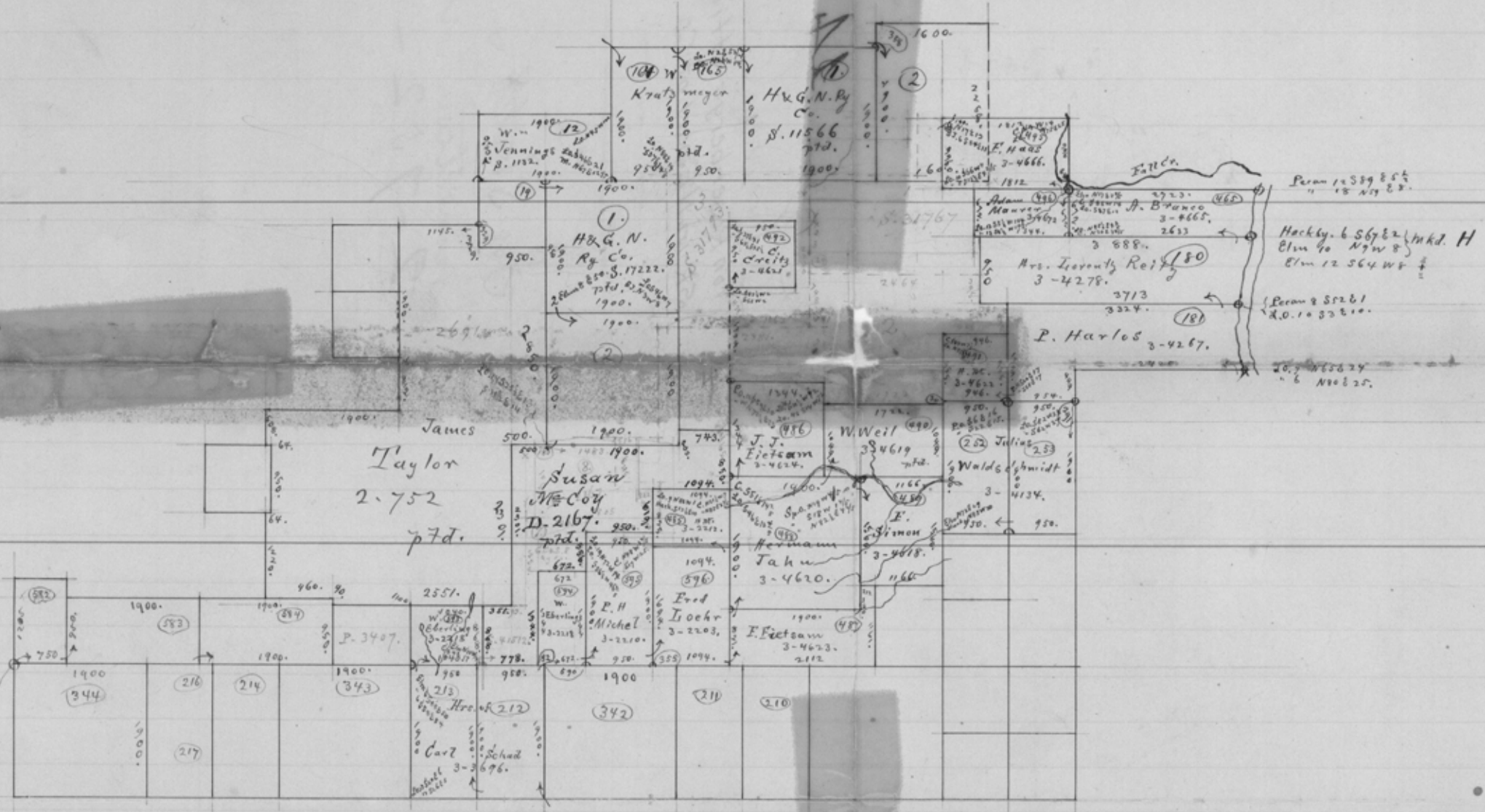


14
Lans Co
Von Rosenberg's office
SK. in NE part of CO
Sketch full

See Sketch &
connection in
2-752-

Lane Co. 18



S.W. cor. of N^o 1 Arnold & Ryan
 L.O. 7^o N 21 8 8
 " 3 3 4 8 6

counter 30390

N.E. cor. Lane County
 April 24 & 25 / 1874