

Lynn County

North Central Zone

X Vara 4

1	242,369.78	215,964.42
2	240,509.88	298,685.42
3	242,883.80	221,555.64
4	236,819.18	221,821.11
5	252,877.50	192,360.12
6	241,370.37	192,857.12
7	239,442.10	192,945.60
8	231,719.19	193,468.96
9	237,666.51	196,902.73
10	245,715.52	204,207.57
11	237,931.13	204,129.59
12	232,556.03	212,478.88
13	231,043.20	178,285.43
14	235,009.98	180,000.93
15	241,033.29	185,232.38
16	252,551.27	184,765.71
17	263,340.60	223,175.47
18	255,692.82	225,695.45
19	219,859.92	228,240.96
20	220,319.81	239,616.98

Lynn County -

North Central Zone

	Latitude	Longitude	X - Feet -	Y
1.	33° 14' 25.068"	101° 50' 26.547"	673,249.40	599,901.18
2.	33° 14' 21.670"	101° 43' 7.627"	668,083.00	589,681.73
3.	33° 16' 58.894"	101° 50' 26.16"	674,677.23	615,432.33
4.	33° 16' 59.573"	101° 53' 35.944"	657,831.06	616,169.75
5.	33° 03' 48.594"	101° 44' 12.019"	702,437.50	534,333.67
6.	33° 03' 49.330"	101° 50' 27.986"	670,473.26	535,714.21
7.	33° 03' 49.570"	101° 51' 30.995"	665,116.94	535,960.00
8.	33° 03' 55.073"	101° 55' 43.584"	643,664.42	537,413.77
9.	33° 05' 36.214"	101° 52' 34.283"	660,184.75	546,952.02
10.	33° 09' 05.979"	101° 48' 21.452"	682,543.10	567,243.24
11.	33° 08' 54.989"	101° 52' 35.478"	660,919.80	567,026.63
12.	33° 12' 38.101"	101° 55' 42.442"	645,988.98	590,219.12
13.	32° 56' 57.304"	101° 55' 44.741"	641,786.67	495,237.30
14.	32° 57' 48.992"	101° 53' 37.875"	652,805.50	500,002.59
15.	33° 00' 20.366"	101° 50' 28.738"	669,536.92	514,617.71
16.	33° 00' 19.652"	101° 44' 12.664"	701,531.31	513,238.09
17.	33° 18' 06.414"	101° 39' 10.501"	731,501.68	619,931.87
18.	33° 19' 07.236"	101° 43' 23.928"	710,257.84	626,931.81
19.	33° 19' 36.036"	102° 02' 59.485"	610,721.99	634,002.68
20.	33° 24' 48.965"	102° 03' 00.569"	611,999.47	665,602.71

SYLVAN SANDERS, LUBBOCK, TEXAS

STATION	LATITUDE LONGITUDE	AZIMUTH	BACK AZIMUTH	TO STATION	METERS SEA LEVEL	VARAS SURFACE
NE Sec 263 Blk L Lynn County Spike in pavement in center of roads going North, South East and West.	33 18 06.414	132 08 45.0	312 07 14.6	Hillen (US)	5740.9	6781.57
	101 39 10.501	183 12 52.1	03 13 10.4	Slaton Water Tank (US)	15333.4	18112.93
COORDINATES ZONE: X: Y:						
Wilson Water Tank Lynn County	33 19 07.236	188 28 44.8	08 29 39.8	BM-J71-ecc (US)	17494.9	20666.25
	101 43 23.928	229 16 25.9	49 17 14.7	Hillen (US)	3031.4	3580.91
COORDINATES ZONE: X: Y:						
SW Sec 160 Blk 12 Lynn County Center of paved road going East and West and graded road North and South.	33 19 36.036 102 02 59.485			Located by measurement from McNabb Station.		
COORDINATES ZONE: X: Y:						
SW Sec 70 Blk 20 Lubbock County Center of paved road going East and West and graded road North and South.	33 24 48.965	60 03 48.1	239 58 36.3	Meadow Water Tank	16912.83	19978.66
	102 03 00.569	190 43 59.4	10 44 27.4	Hill ref.mkr No. 1 (US)	7058.23	8337.69
COORDINATES ZONE: X: Y:						

SYLVAN SANDERS, LUBBOCK, TEXAS

STATION	LATITUDE LONGITUDE	AZIMUTH	BACK AZIMUTH	TO STATION	METERS SEA LEVEL	VARAS SURFACE
SW Sec. 2, Blk. H Dawson County Old cedar fence corner post at West end of blow sand ridge. Occupied property line position. COORDINATES ZONE: X: Y:	32 56 57.304 101 55 44.741	244 11 56.1 180 07 03.4 90 02 48	64 13 05 00 07 04.6 269 59 26	NE Sec 1 Blk H Double Lakes Corner SW Sec 4 Blk C 41	3659.59 28982.5 9674.5	4322.97 34236.4 11428.3
NE Sec 1 Blk H Lynn County A 1" GIP in center of roads going North, South and West. See deed of acquittance to Sec. 1, Blk. H. COORDINATES ZONE: X: Y:	32 57 48.992 101 53 37.875	264 07 40.9	84 09 45.8	O'donnell Water Tank (US)	5991.35	7077.42
NE Sec 39 Blk 8 Lynn County 1 1/4" GIP in center roads going North, South, East and West. COORDINATES ZONE: X: Y:	33 00 20.366 101 50 28.738	345 29 45.5 151 07 55.6	165 30 07.5 331 07 21.2	O'donnell Water Tank (US) Pearce (US)	4185.39 3390.49	4944.09 4005.09
NE Sec 416 Blk 9 Lynn County A 1" IP in center roads going North, South, East and West. COORDINATES ZONE: X: Y:	33 00 19.652 101 44 12.664	163 47 13 208 46 30.8	343 45 20.3 28 47 54.2	Tahoka Water Tank (US) Pennington (US)	19161.85 8247.51	22635.37 9742.56

counted 2/5/21

SYLVAN SANDERS, LUBBOCK, TEXAS

STATION	LATITUDE LONGITUDE	AZIMUTH	BACK AZIMUTH	TO STATION	METERS SEA LEVEL	VARAS SURFACE
SW Sec 81 Blk 8 Lynn County A 1" IP center of road going North, and in line with fences going East and West.	33 05 36.214 101 52 34.283	342 38 19.8 57 36 54.9	162 39 50.2 237 35 11.6	O'donnell Water Tank (US) NE Sec 52 Blk I	14438.92 5815.01	17056.3 6869.11
COORDINATES ZONE: X: Y:						
NE Sec 224 Blk 2 Lynn County 2-1 1/4" IP in center of Highway South.	33 09 05.979 101 48 21.452	87 04 31.5 206 38 33.5	267 02 12.6 26 38 56.6	Light on AP & T Tower Tahoka Water Tank (US)	6592.00 2443.7	7786.95 2886.68
COORDINATES ZONE: X: Y:						
Light on AT & T Tower Lynn County	33 08 54.989 101 52 35.478	159 37 34.8 296 54 14.5 347 42 03.6	339 37 01.2 117 00 12.7 167 43 34.8	Crosby (US) Pennington (US) O'donnell Water Tank (US)	4567.25 19077.49 20372.20	5395.17 22535.72 24065.12
COORDINATES ZONE: X: Y:						
Double Lakes Corner NE Sec 319 Blk 3 Lynn County A 1 1/2" IP, Flange on Top in center old circular trench	33 12 38.101 101 55 42.442	308 32 23.0	128 33 31.8	Crosby (US)	4159.2	4913.15
COORDINATES ZONE: X: Y:						counter 3072

SYLVAN SANDERS, LUBBOCK, TEXAS

STATION	LATITUDE LONGITUDE	AZIMUTH	BACK AZIMUTH	TO STATION	METERS SEA LEVEL	VARAS SURFACE
SW Sec 211 Blk 4 Lynn County Center of cross roads.	33 03 48.594	155 50 17.5	335 48 24.3	Tahoka Water Tank (US) Pennington(US)	13111.84	15488.66
	101 44 12.019	258 39 57.5	78 41 20.7		4032.04	4762.94
COORDINATES ZONE: X: Y:						
NE Sec 13 Blk 8 Lynn County A 1" IP buried in center of road going North, South, East and West.	33 03 49.330	200 07 14.1	20 08 46.3	Tahoka Water Tank (US) Pennington(US)	12716.03	15021.1
	101 50 27.986	266 44 56.4	86 49 44.7		13727.7	16216.16
COORDINATES ZONE: X: Y:						
NW Sec 13 Blk 8 Lynn County IP incenter of roads going North, South, East and West.	33 03 49.570	345 45 14.6	165 40 10.5	O'donnell Water Tank (US) Pearce (US)	10829.48	12792.57
	101 51 30.995	00 21 04.6	180 21 04.2		4375.79	4105.86
COORDINATES ZONE: X: Y:						
NE Sec 52 Blk I Lynn County 3/4" IP in center of roads going North, South, East and West.	33 03 55.073	299 08 38.9	119 10 56.2	Pearce (US)	7480.5	8836.51
	101 55 43.584					
COORDINATES ZONE: X: Y:						

Counter 30529

SYLVAN SANDERS, LUBBOCK, TEXAS

STATION	LATITUDE LONGITUDE	AZIMUTH	BACK AZIMUTH	TO STATION	METERS SEA LEVEL	VARAS SURFACE
NE Sec 383 Blk 5 Lynn County A 1" IP in center of road going North, South, East and West. COORDINATES ZONE: X: Y:	33 14 25.068 101 50 26.547	231 29 17.4 18 11 28.7	51 33 09.3 198 10 18.1	Wilson Water Tank Light on AT & T Tower	13970.33 10703.06	16502.77 12643.23
SW Sec 9 Blk 7 Lynn County A 1 1/2" King pin in center of roads going North and East. See deed of acquittance Sec 9. COORDINATES ZONE: X: Y:	33 14 21.670 101 43 07.627	Located by Auxiliary Stations.				
Dixie Corner NE Sec 394 Blk 5 Lynn County RR spike in pavement in center of crossed roads. COORDINATES ZONE: X: Y:	33 16 58.894 101 50 26.16	250 05 22.2 12 37 38.7	70 09 14.3 192 36 28.1	Wilson Water Tank Light on AT & T Tower	11628.36 15276.56	13736.26 18045.78
NE Sec 102 Blk 9 Lynn County RR spike in pavement in center of road going North, East and West. COORDINATES ZONE: X: Y:	33 16 59.573 101 53 35.944	323 17 55.5 00 07 38.6	143 21 11.0 180 07 38.2	Tahoka Water Tank (US) Crosby (US)	15467.71 10647.19	18271.58 12577.23

(Part 2)

File No. 19

LYNN County

SKETCH FILE

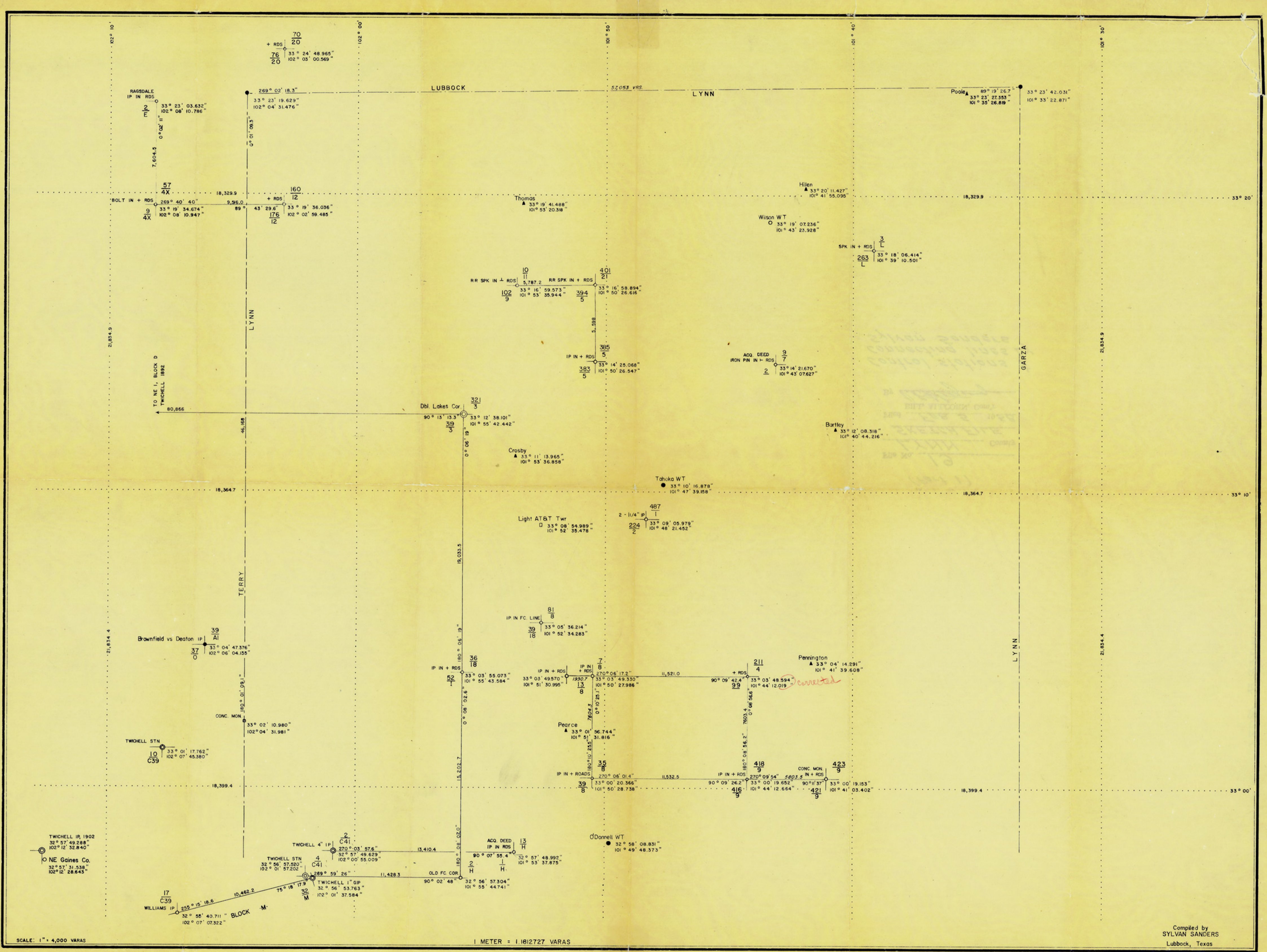
Filed FEB 5 19 58

BILL ALLCORN, Com'r

By *V. E. [Signature]*

counter 305 24

Lynn Co. St. File #19



SCALE: 1" = 4,000 VARAS

1 METER = 1.1812727 VARAS

Compiled by
SYLVAN SANDERS
Lubbock, Texas