

S- 1562
3- 2240
" - 2245
" 2552
" 3538
" 3540
" 3547

Texas.

July 28th

3

Hon W C Walsh

Austin

Dear Sir!

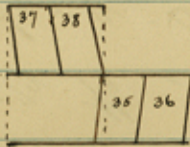
Enclosed please find
plat of Surveys Nos 35 I.R.R. Co + 36
State Survey also " 37 " + 38
" " and Survey 73 + 74 Heinrich
Krause No 262 F.W.M., No 89 + 90 Christian
Rockhardt, 275 F.W.M. and 97 + 98 Anton
Keller, 66 + 65 Meyue Meyer

These Surveys are situated on the
waters of Bluff, Leon and Saline
creeks about N 80° W 13 to 18 miles from
Mason and the Surveys most complica-
ted are No 35. - 36 - 37 + 38 - 320 acres
each surveyed by I.R.R. Co. Cert.

These surveys in field notes for the
old original corners of adjoining
Surveys and these old corners I
marked on plat, and to connect these
corners you will notice on Survey
No 35 the lines have to run N 5 1/2° E.
or S 5 1/2° W instead of field notes read-
ing due South and North. -

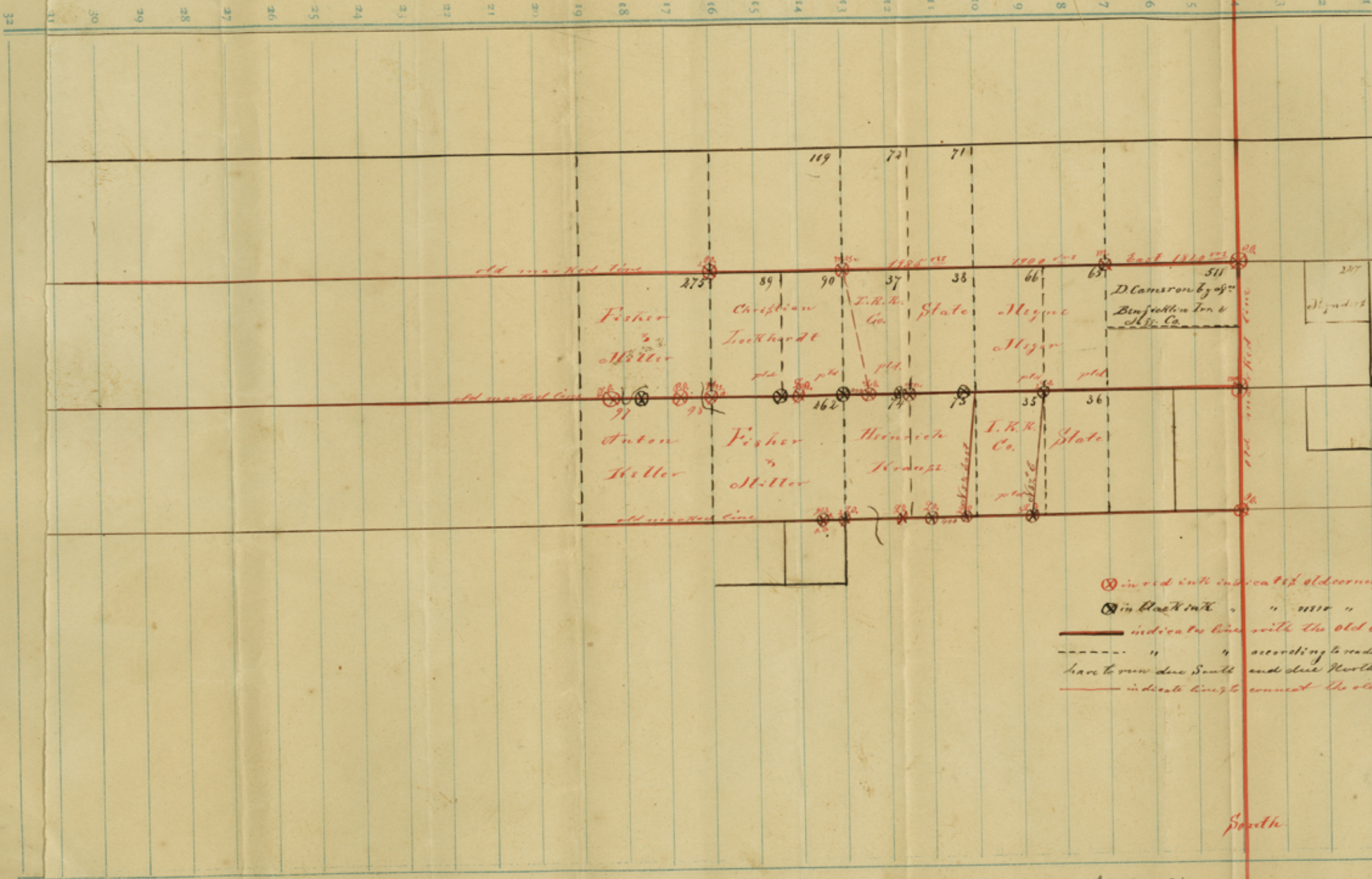
If I start from N.E. cor of No 35
and N.W. cor of No 36 + run South 1900
as I will come out East of the
old corners and so reversed, and in-
stead as patent calls for straight
lines N + S. it would put the Sur-
vey No 35 as indicated in red
black dotted lines shows the way

it is on map and field notes call for. And on Survey N^o 37 & 38 I have to run the lines N & N to go from N.W. cor. of 37 to its S.W. a due South line brings it 4000 are West of Original old corner with identical bearings, there, yet, & would throw the surveys in the following shape



I have found the old original marked lines running E & N. & also One Orig. wood line running N & S, & marked these in red and black. I can also find some new Bearing trees marked I can and have identified, all the old corners marked in red, and the question is whether I have to run the lines according to Patent & field notes due N & S. & establish new corners Or have I to run any connect the corners called for in patent, no matter what course, I am very anxious to have your opinion on the question as I am not able to do anything & be therefore glad to have you to instruct me in this case and an answer will be thankfully received

Truly Yours
 Franz Penkhart



⊗ in red ink indicate old corners with Bearing trees
 ⊙ in black ink " " " " " "
 ————— indicates lines with the old orig. line marks
 - - - - - " " according to reading of Patent & field notes
 have to run due South and due North
 ———— indicate lines to connect the old corners.

Sketch file 11.
Mason County
Iowa

Frazer Benhart
Mason July 28/83

N. 80 W. 17 to 18 miles
from Mason

Acq^d Oct 4/83

W. H. C.