

Sketch File No. 21 ²⁰/₂₁

Mason County

Sketch by J.H. King

T.C. RyCo. Secs. 1&2

Filed October 10th 1932

J. H. Walker, County

C.F. Blucher

File Clerk

Descriptive: 15 Mi. N. 55 E Mason

See File 22 for statement - 23

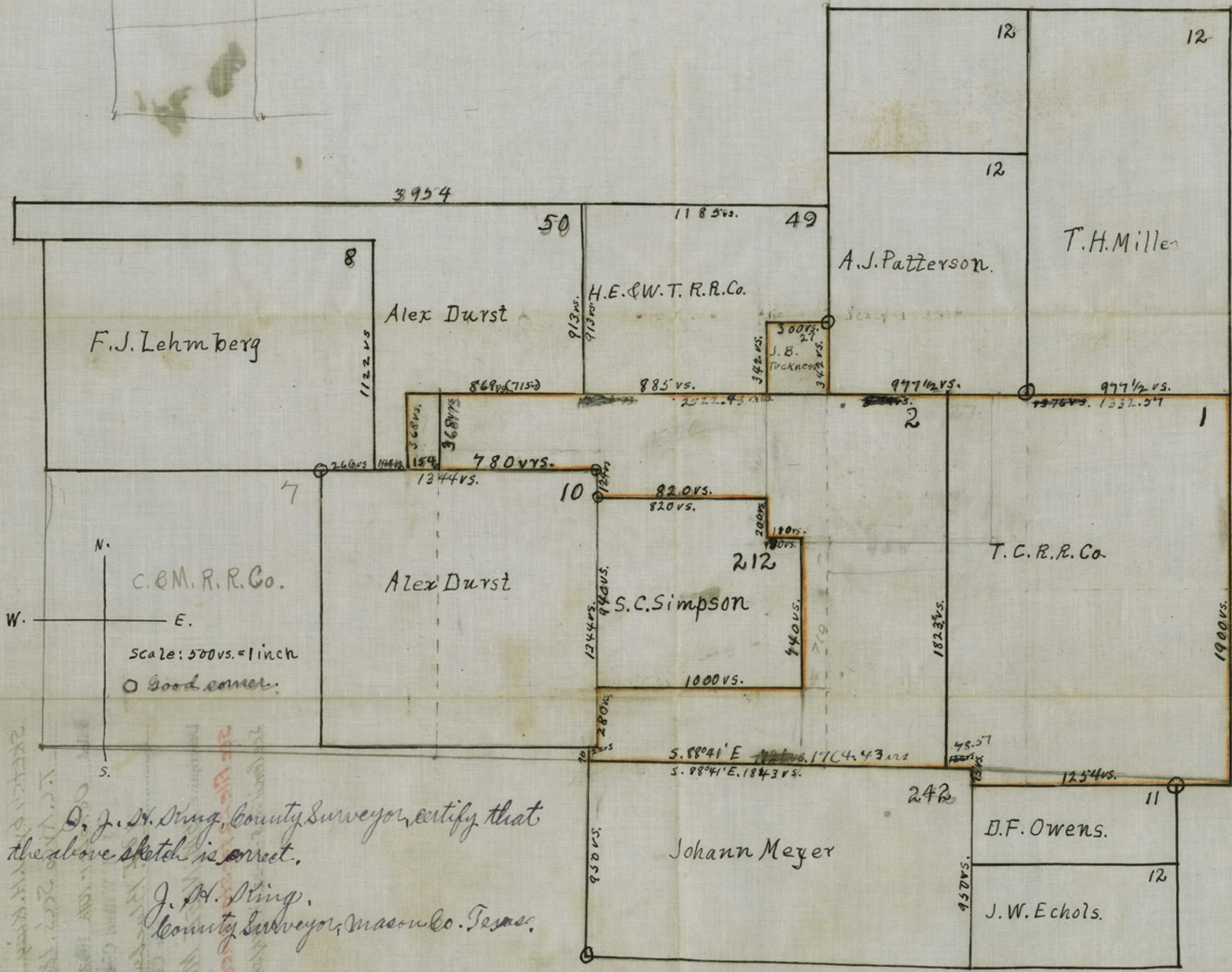
See Pencil Sk. 5-16-32 in Wk/Sk. Files.



Handwritten notes:
 Both of the parcels of the
 T.C. RyCo. are owned by
 J.H. Walker

counter 30717

counter 30718



O. J. H. King, County Surveyor, certify that the above sketch is correct.

J. H. King, County Surveyor, Mason Co. Texas.

1" = 500 vs.

counter 30718