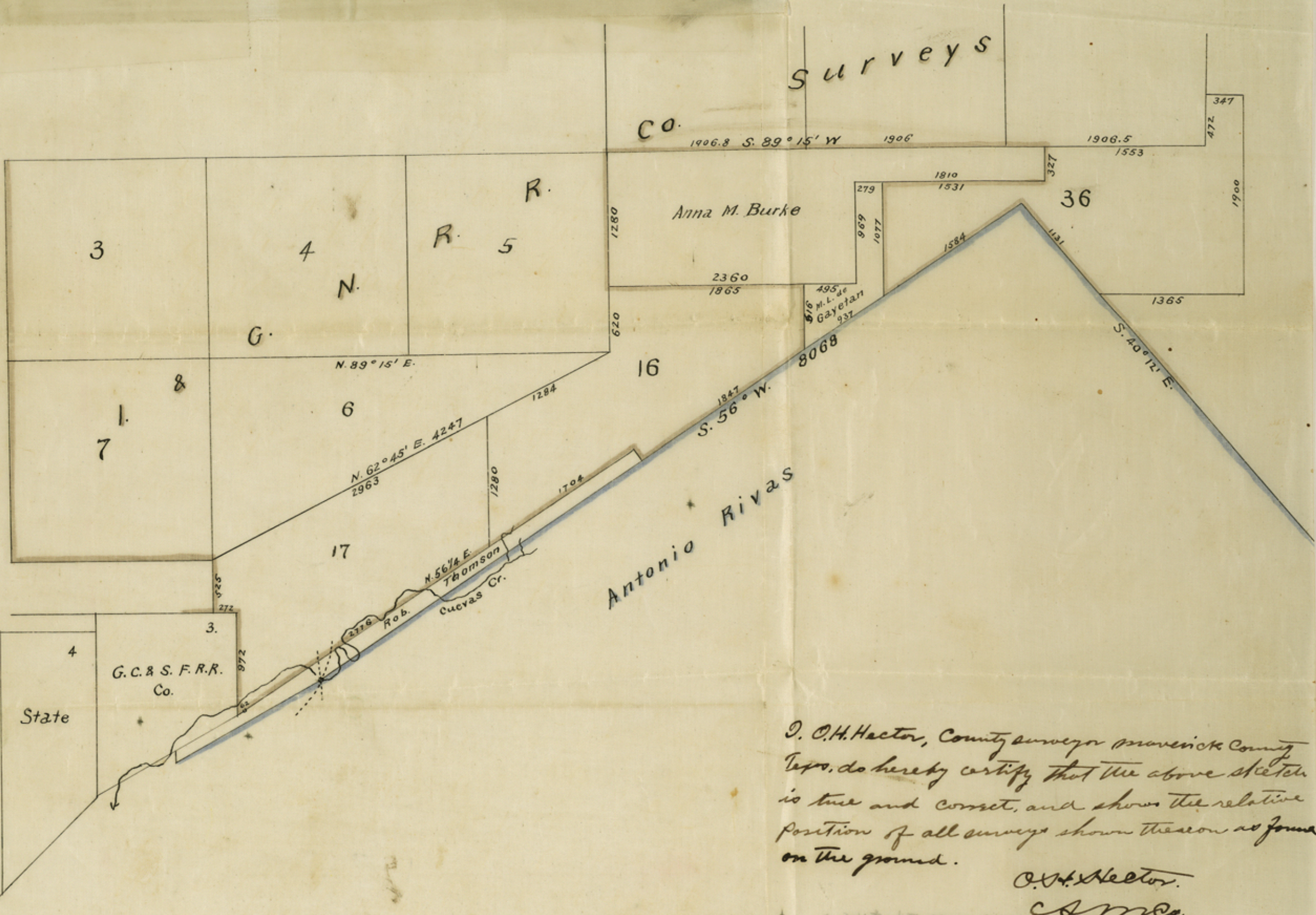


28. File No. 198
Maverick Co.

Ho

Surveys

Co.



D. O. H. Hector, County Surveyor Maverick County
Tex., do hereby certify that the above sketch
is true and correct, and shows the relative
position of all surveys shown thereon as found
on the ground.

D. O. H. Hector.

C.S.M.Co.

Counter 31117

1237 Mex. 1 etc
742, Vol. 8,
Antonio Rivas
1/8/72

Field notes of a connecting line run in January, 1886, from the North corner of the Rivas Grant, along its North boundary line to the intersection of Hall's Road. Variation, $9^{\circ} 30' E$.

Beginning at a mesq. post in an earth md. and four pits, set for the North corner of the Rivas Grant, from which a two-pronged mesq, one prong 12" mkd. + (very old mark, same as found on bearing tree at Rositas corner), bears $N. 55^{\circ} E. 21$ vs.; another mesq. mkd. \bar{x} (new), bears $N. 37^{\circ} 5' N. 157 \frac{4}{5}$ vs. Thence $S. 56^{\circ} 25' N.$, at 1000 vs. cross the divide between Cuevas and Guajolote Creeks, at 1530 vs. cross branch, course $E. of S.$, 1900 vs. set a stake. Thence same course, new count, at 580 vs. cross branch, course South, at 640 vs. cross Eagle Pass and Camizo Road, at 800 vs. top of ridge, at 1200 vs. old line tree about 30 vs. to left, at 1480 vs. main Cuevas Creek about 50 vs. to left, at 1645 vs. cross branch, course South, at 1700 vs. Cuevas Creek about 60 vs. to left, 1900 vs. set a stake. Thence, same course, new count, at 20 vs. cross Cuevas Creek, at 128 vs. recross same, 1900 vs. set a post. Thence, same course, new count, at 78 vs. cross small branch, at 230 vs. cross small branch, at 1006 vs. recross Cuevas Creek, 1900 vs. set a post. Thence, same course, new count, at 37 vs. recross Cuevas Creek, at 123 vs. recross same, at 262 vs. recross to North

side, between first and second crossings of
Cuevas is an island, at 445 v. cross
old Holl's Road, 468 v. Thence S. 33° 35'
E. 41 v. to the centre of Cuevas Creek at
the crossing of the Laredo and Holl Roads
making a total length of this line of 8068'
v., instead of 8145 v., as called for in
original field notes. Mean course of line
at variation 9° 30' E., S. 56° 5' N.

Beginning at the North corner of the
Rivas Grant, as described above. Thence
N. 33 $\frac{3}{4}$ ° N. 17 $\frac{1}{5}$ v. to a point. Thence N. 56 $\frac{1}{4}$ ° E.
368 v. to a mesq. 10' dia. mhd. $\bar{\bar{X}}$ on N. N. side
being the bearing tree called for at the most
northern S. E. corner of the Anna M. Burke
Survey.

I, O. A. Hector County Surveyor, Maverick
County, Texas, do hereby certify that the above
connecting lines are true and correct, and
that a copy of same is now on file in my
Office.

O. A. Hector
C. S. M. Co.

Maverick Co.

OH Hectors

Sketch & connection filed

May 31 / 1886.

D. N. Robinson

Chief Clerk.

Dated Jan. 1886.

F. N. Cor. of Rivas grant
to Wall's Road.

Field notes of a connecting line run in January, 1886, from the N. corner of the Rivas Grant along its North boundary line to the intersection of Wall's Road. $\text{Var. } 9^{\circ}30' \text{ E.}$