

Bayle & Co. March 16th 1886.

May 16 9:30 E

~~57437~~
16682

Explanation to sketch.

Connecting lines run at various times.

(1) Jan'y 2nd 1885. T. N. Hobbs.

Beg - at post S.E. cor Sur 600. State & N.E. cor 699. A.B. M. fr. wh. a mes 6" N75 E 250'. do 8" S24 W 40'.

Thence S70 1/2 W at 640' x br 1900' st fr. wh. mes 12" br S73 E 10'. do 10" S32 1/2 W 17'. 2888' as to W. line Sur 601. and S19 3/8 E 31' to stake set for S.E. cor 602. fr. wh. a ft. mes 16" br N85 W 11 1/2' do 12" N57 1/2 W 23'.

(2) Feb'y 16th /86. Nagley Bros.

Beg - at stake set for S.E. cor Sur 566. J. Foster. & S.W. cor 607. From which a leaning mes 4" br N42 1/2 W 50'.

Thence N70 1/2 E at 594' as pass 20' N. of st set for N.E. cor Sur 401. & N.W. cor 402. Mes 5" N48 E 138'. 3677' N. st fr. wh. M. 6" S20 E 22'. Then N19 3/8 W 556' N. st. fr. wh. mes 14" br N88 W 130'. Then N70 3/8 E 1344' st set for S.E. cor 607. S & B Pilkington. Mes 8" N4 1/2 E 11' - again see S.E. cor 602. as above. Beg - at S.E. cor 602. Then S70 1/2 W at 1520' v. x stough 1715, 1780 & 18100' x picosa or 1900' v. post fr. wh. a mes 16" S66 E 17'. do 5 prongs 16" S59 W 22'. & S.W. cor 602. Then S19 3/8 E 224' to N line 613. F. N. Small. Then S70 3/8 W 1115' and N19 3/8 W 122' to above S.E. cor Sur 607. Then again N19 3/8 W from S.W. cor 602 as above at 350' v. x picosa or 1900' v. crossing creek several times. to st fr. wh. clump of Elm 12" br N12 W 100'. Then N70 1/2 E at 807' x br 1900' v. post. +

(3) Sept 2nd /86. Wilburger.

Beg - at S.E. cor 602 as above. Thence N19 3/8 W at 1788' as pass N.W. cor 601. A.B. & M. (1900' as to above post) + then from N.W. cor 601. N70 1/2 E 988'. St. fr. wh. M. 10" S9 E 26 3/8'.
counter 3121 over. □

Then N $19\frac{3}{4}$ W 1430 as set stake. N.W. cor Sur 600.

Then N $70\frac{1}{2}$ E 710 as. to stake set # 4. North of S.W. cor 603.

A.B. & M. said S.W. cor Sur 603 being set from point 707 as west of S.E. cor Sur 184, Bl 7. D.H.K. as per field notes of same (4) again from N.E. cor 150 Bl 7. South 1° East 3800 as to post Earth M^s 4 pits set by E. A. Giraud ^{for S.E. cor Sur 184, Bl 7.} M 6" N50 W 121. do 6" N $4\frac{1}{4}$ W 121.

Then S 89 E at 4600 x br 1900 as S.E. cor 607. A.B. & M. set post.

Then S 16 118 as Stake S.W. cor 608. Then East 270 as to N.W. cor 603. Thence South 1119 as to above point on w line 603.

(5) Then again beg - at above cor set by E. A. Giraud Then S 89 E. 43 as to post. Then South at 501000 x br. 2029 as stake set on N. line Ne 602. 592 as S $70\frac{1}{3}$ W from its N.E. corner

(6)

Sept 25th 86. H. Wilson Beg at an ash S.E. cor 594. G.H. Meyer. Then N 20 W 21. picora cr. 10380. and N 70 E 16 as to st. p. wh. a mes ft 16" S 36 W 41. do ft 15 N 86 E 13 v.

Then N $19\frac{3}{4}$ W 2940 as st for point. Then N $70\frac{1}{2}$ E 1034 as to a marked line. Then N 20 W 200 as. to a post 5-ft high S.E. cor 599. A.B. & M. M 15" S 72 E 61. do 7" N 8 E 40 v.

Then S $70\frac{1}{3}$ W 2888 as st for S.W. cor 601. A.B. & M. set st. M 16" S 54 $\frac{1}{2}$ W 121 v.

(7) again Beg at N.E. cor 594 G.H. Meyer as above.

Thence S $70\frac{1}{3}$ W at 4901 x br 735-10 x picora cr. 19000. set stake with a ft mes 16" br N 73 E 74 v. Thence N $19\frac{3}{4}$ W at 2033 as pass N 70 E 206 as from S.E. cor 613. T.H. Small. 2940 v. x picora and two sloughs to st set for S.W. cor 608. 8145 as to above point set for S.W. cor 601.

Note. Sur 608 H.S. Pilkington is an office survey, therefore cannot reach 599 & 601 A.B. & M. on North and has its beg at N.W. cor 594, which is 571-1000 from the N.E. cor.

She is by ref. to the above & being
 O. H. Hector
 County Sur. Minn. Co.



J. A. Hector County Surveyor Maverick Co. do hereby certify
 to the above sketch as being true and correct and show the true position
 of surveys on ground. as found by me. signed C. A. Hector
 County 31123 C. A. M. Co.

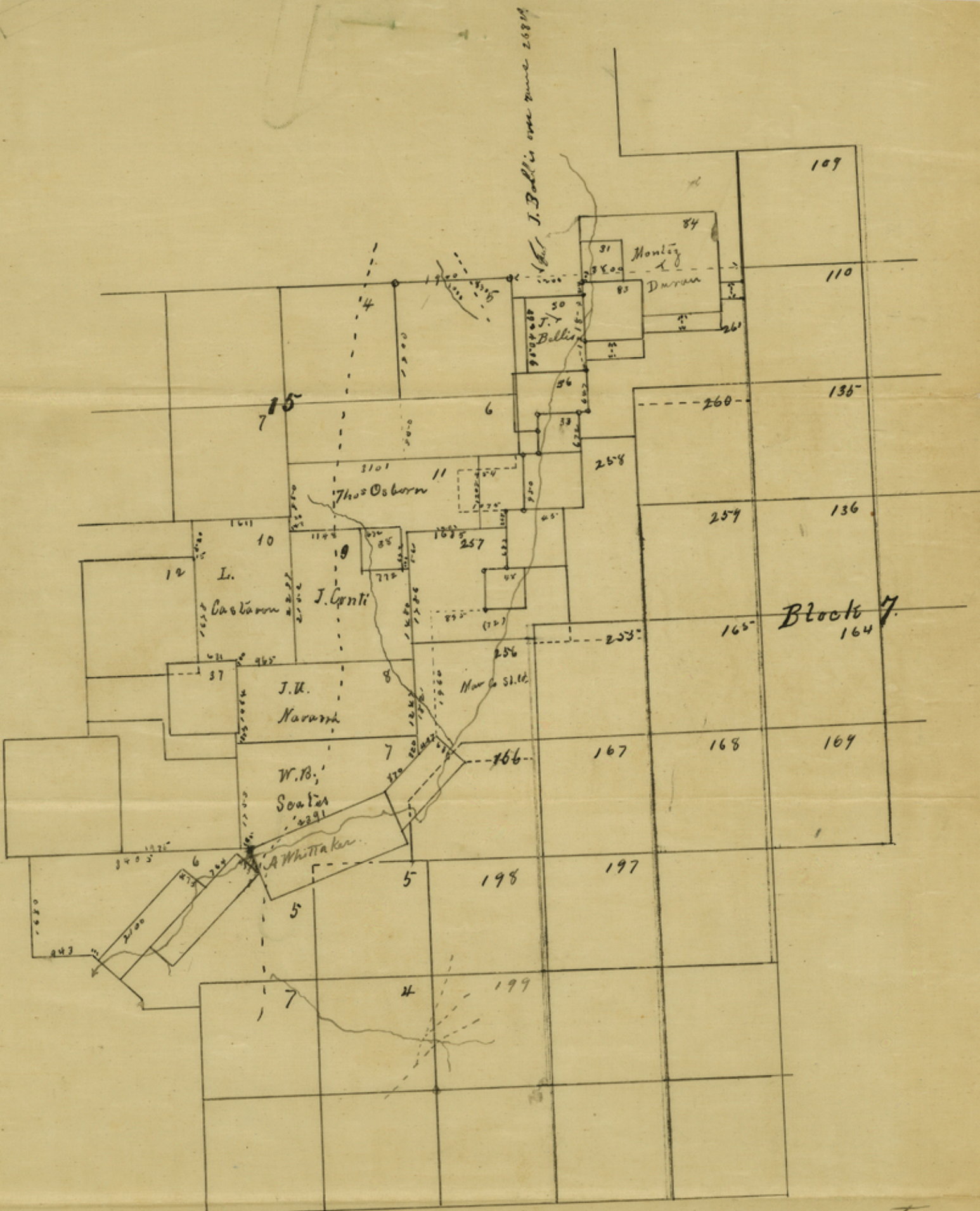
18

~~18~~ ~~21~~

OH Hector's SK & Explanation
of surs. around the S. & S. Pilkin
ton tract.

Filed July 13, 1887.

Maverick Co



I hereby certify to the above sketch as being true and correct.
 C. H. Hector
 C.S.M. Co.

Maverick Co.

Sketch 18.

Filed July 13/87.

County.

CONTENTS.

No. 1. Certificate.

Nos. 2 and 3. Field Notes.

No. 4.

IP.

Acres.

Acres.

LAND.

counter 31127