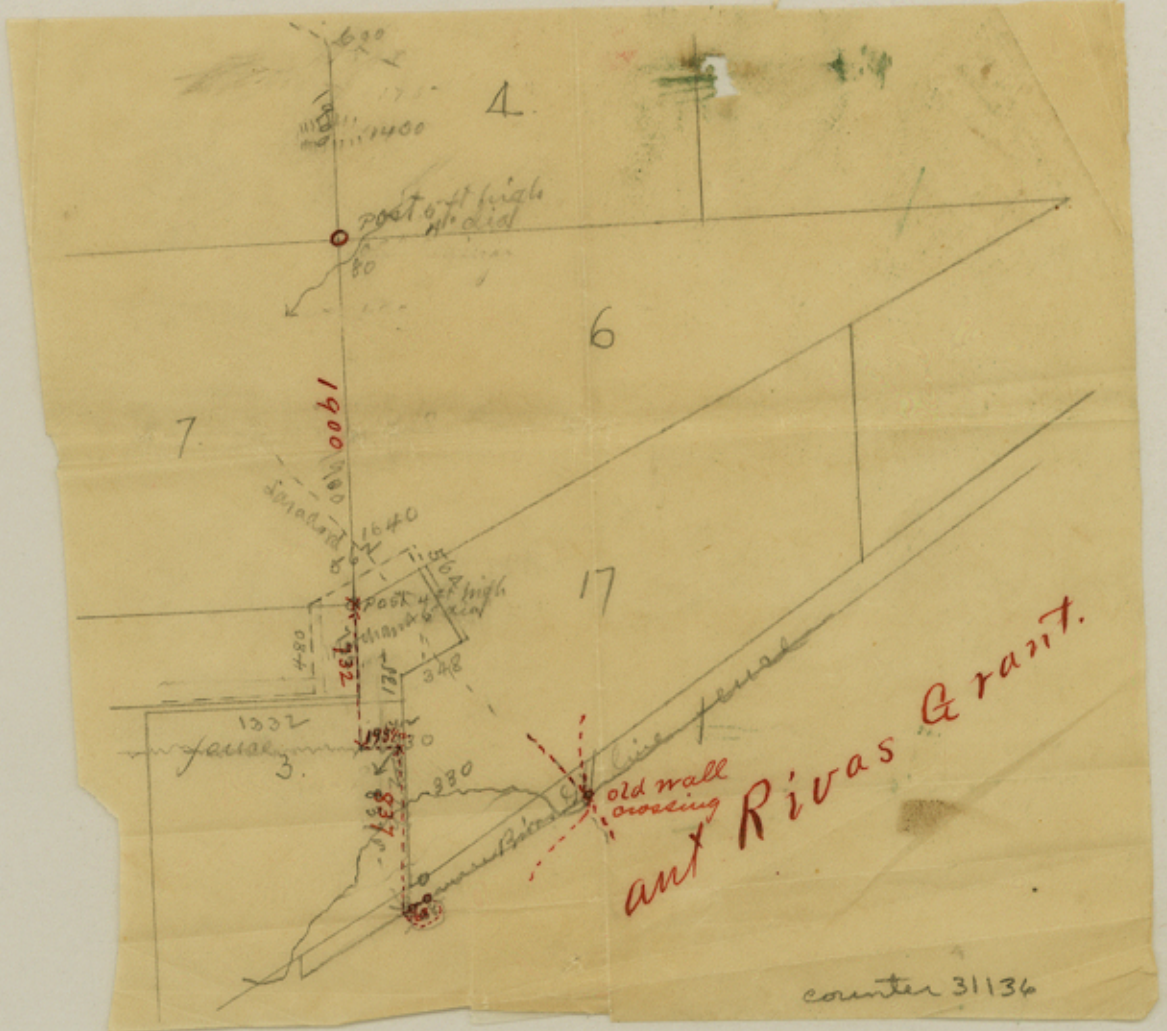


71.B. This will help to guide the draftsman now mapping Map of Maverick County

I, O.H. Hector County Surveyor Maverick County, Texas, do hereby certify that the above sketch is made from actual running upon the ground and is a true representation of the surveys as found by myself signed this 27th day of April A.D. 1892.

O.H. Hector
 C.S.M.C.
 2/1/92
 58



ant Rivas Grant.

counter 31136

1995
COUNTY OFFICIALS

J. M. Goggin, County Judge. D. W. Nicholson, Co. Attorney.
J. B. Hancock, Co. Dist. Clerk. C. S. Hector, Co. Surveyor.
W. V. Cooke, Sheriff & Collector. L. F. Dolch, Assessor.
Joseph Backus, Treasurer. B. S. Montgomery, Insp. 1124.

COUNTY COMMISSIONERS

J. A. Bennet, Precinct No. 1. Jos. Wipff, Precinct No. 3.
Ly. Klappenbach, " 2. Jas. Florie, " 4.

Eagle Pass, _____ 189

Begin at NW cor Sur m^o 38 F. Favre. a stone m^o
fr. wh. a mes stump 7" brs N18W 68 v. a do. 9" S88^o
E. 31 v.

Then west 1097 vas. NW cor no 9.

Then South 36 v. NE cor no 10.

Then West 1632 vas. and South 245³/₄ vas to NE
cor no 12, State.

Then West at 996 v. x br. cw s. 1286 v. + rd cw SW
1900 v. NW cor no 12. a st fr wh. a mes 7" S61^o E
56³/₄ v. a 2 prng mes 16" N11¹/₄ E 309 v.

Then South 1900 v. SW cor 12. 2850 v. S8 cor 47.

Then from NW cor no 12 as above. N88^o W. 1910
v. a Stake NW cor no 11. a Brazil 6" N1¹/₄ E 81¹/₂ v.
a Brazil 6" and mes 7" S34¹/₂ W. 157 v.

See corrected notes to 14. GC & SF. to west of no 11. a
carter as above described.

Mag Va 9^o 45' E. I hereby certify to the correctness of the
N.B. above notes.

O. S. Hector C. M. Co.

The above notes are sent up for a guide to
draftsman now compiling map of Maverick Co.



1990

COUNTY OFFICIALS	
J. M. Goggin, County Judge.	D. W. Nicholson, Co. Attorney.
L. B. Hancock, Co. & Dist. Clerk.	C. N. Hector, Co. Surveyor.
W. A. Cooke, Sheriff & Collector.	L. F. Dolch, Assessor.
Joseph Backus, Treasurer.	B. T. Montgomery, Insp. H&A.

COUNTY COMMISSIONERS	
J. A. Bennet, Precinct No. 1.	Jos. Wiffiff, Precinct No. 3.
Sy. Klappenbach, " 2.	Jas. Stone, " 4.

Eagle Pass, _____ 189

Beg at N.W. cor No 50, H. Arnold. on Rio Grande
Thence East to 9th E 2701 var. set stone and
Thence South at 604¹/₂ var - pass west 70 var, from
the S.W. cor no 51 B. Guerrero. 672 var set stone
and for S.E. cor No 50, H. Arnold which sets 5¹/₂ var
N of S-line no 52. C. Flores. and East 208 v. from
its S.W. corner, cutting off 36¹/₂ acres of no 52,
by conflict. Aug 23rd 1887.

Note the N.W. cor no 50 H. Arnold was set by me
May 17th 1886. Running course and distance
from the mouth of Elm creek or N.W. corner
no 43. J. Rodrigues.

I hereby certify that the foregoing notes
are true and correct.

O. H. Hector
C. S. M. Co.

sent up to guide draftsman now compiling
map of maverick Co.
April 29th 1892.



1990

COUNTY OFFICIALS

J. M. Goggin, County Judge.	D. W. Nicholson, Co. Attorney.
T. B. Hancock, Co. & Dist. Clerk.	C. S. Secker, Co. Surveyor.
W. N. Cooke, Sheriff & Collector.	L. F. Dolch, Assessor.
Joseph Backus, Treasurer.	B. B. Montgomery, Insp. H&A.

COUNTY COMMISSIONERS

J. A. Bonnet, Precinct No. 1.	Jos. Wipff, Precinct No. 3.
Ty. Klappenbach, " 2.	Jas. Stone, " 4.

Eagle Pass, June 26th 1891

Beginning at a rock set in ground for NW cor No 33
 a. Hausen Jr. wh. a Hackberry 16" bro S 72° E 35' var. the
 willow, cut down by Beavers.

Then N 45° E 2214 var. NE cor 33.

Then S 45° E 522 var to N. line no 21. G. de Los
 Santos.

Then N 45° E 1265 v. + road 3013 var NE cor 21.

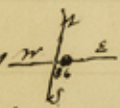
Then S 45° E at 1036 v. + Rosita cr. 1444 v. SE cor 21.

Then S 45° W 483 var N.E. cor 20

Then S 45° E 1444 var SE cor 20 1844 var N. line
 no 19. J. J. Garcia. 270 var N 45° E of SE cor. D. L. & C.
 Co survey 19th.

Then N 45° E 40 v. + road 1163 var NE cor no 19.

Then S 45° E at 91 var pass 27 var S 45° W of reentrant cor
 no 73. 484 var pass S 45° W 27 var of NW cor no 25. 2101
 var S.E. cor no 19. again S 45° E 1574 var. and East
 535 var to SW cor no 100. D & G. N.

Then West 36 var to corners of 4 pasture fences. This v. 

Then South 1320 v. + Laredo rd. 1528 v. Rm'd on gravel ridge.
 for point. see next page

File No 22 26.
Connecting Lines
by W Hector
Co Sur
Maverick Co

Filed in Genl L.
Office May 7/92



22, 26, 27

On Hector's S.K. & Con. line
around the S & S. Pickinton
Sur. in Maverick Co.

GENERAL LAND OFFICE
AUSTIN, TEXAS

WM. H. McDONALD
COMMISSIONER

counter 31141