

~~Site 10~~ ^{1 mile S}/₅₈

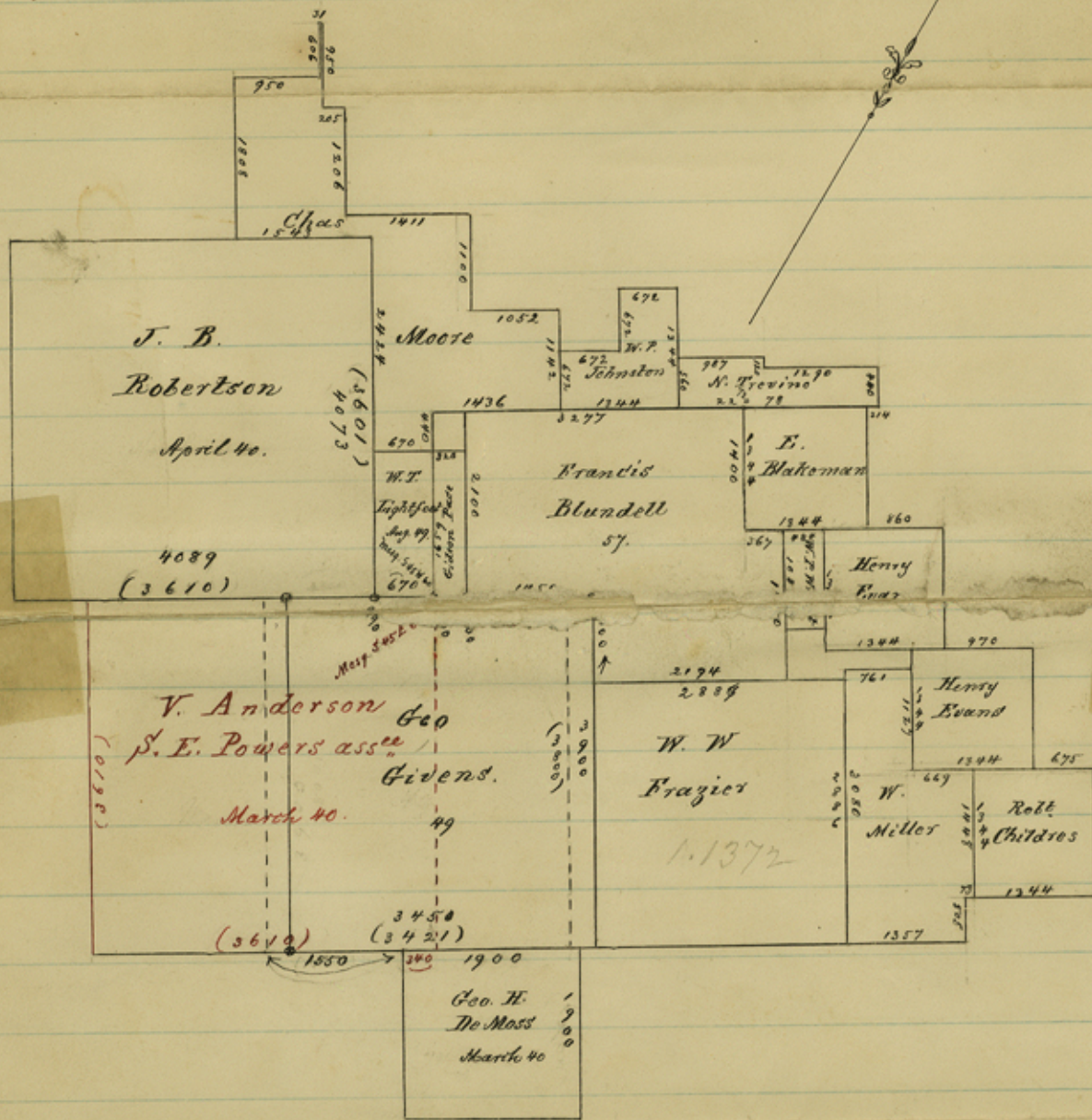
Milam District

Brazos above mouth of Bosque
received Nov. 29. 1847.

Plotted on map. Nov. 30. 1847.

Mc Clellan County

about 5 miles North of
Waco.



To H. De Moss, V. Anderson and J. B. Robertson are the first surveys made by S. B. Crath in 1840. Robertson's survey begins $S60^{\circ}W$ 670 ors from V. Anderson's N.E. corner. W. F. Lightfoot's survey was made in 1849. It describes no corners by bearings, but the S.E. corner of J. B. Robertson and the N.E. corner of V. Anderson and the latter erroneously as the Mesquite tree $S45^{\circ}E$ 60 ors, and not $S45^{\circ}W$ (See Milam 1-385). In the same year (49) the Geo. Givens was located covering part of Anderson's survey by commencing 1550 ors $S60^{\circ}W$ from the S.W. corner of De Moss, as indicated on above sketch by the black dotted lines.

The Francis Blundell survey made in 1859 calls to run from Givens N.E. corner $S60^{\circ}W$ 1450 ors to W. F. Lightfoot's S.E. corner, but without giving bearings. Said call would have been correct, if the position of Geo Givens survey on the ground would agree with its connection by fieldnotes, and as assumed by Crath, the Surveyor, but later investigation by the County Surveyor, whose certified statement is on file in this Office proved the Givens survey to lie 320 ors farther $S60^{\circ}E$ and moves the Blundell survey the same course and distance from Lightfoot's survey. The Surveyor found the original N.W. corner of Geo Givens, the original S.W. corner of W. F. Lightfoot, both corners with bearings, and old stonemounds at Lightfoot's S.E. corner, and Blundell's S.W. corner and Geo Givens N.E. corner, the distance between the latter two corners agreeing with Blundell's fieldnotes.

See also notes p. 4.

C. W. Pryder.

Counter 31242

12,

5.5

McLeman co

Pressler's SK. Showing the
Geol. ^{de} Moss, V. Anderson &
J B Robertson Surs.

counter 31243