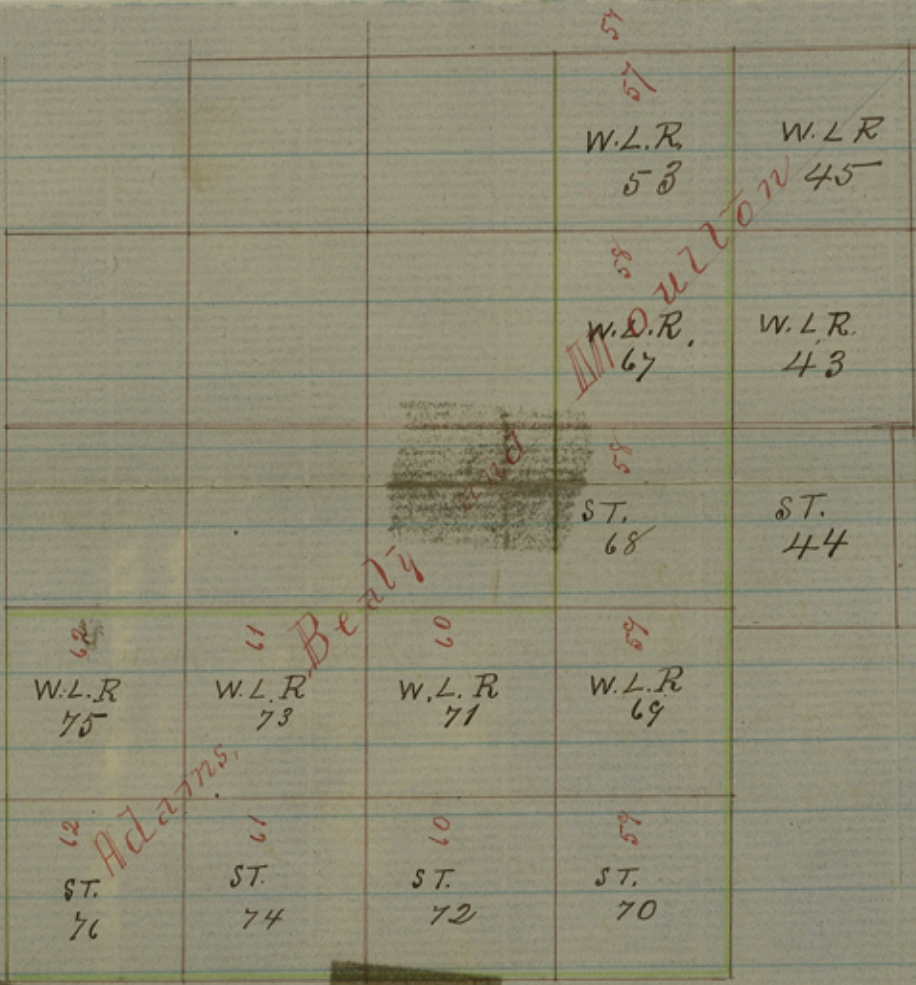


North

Var. 9° East

Scale 2000. W. per Inch



South Boundary of M. Muller Co.

I R. H. Brown, Sur. S. O. Dist. do hereby certify that I have examined the foregoing Plat of Surveys nos 67. 68. 69. 70. 71. 72. 73. 74. 75 & 76 made by virtue of Adams, Bealy & Moulton sculp. nos 58. 59. 60, 61 and find same correct and that it is recorded in my Office in Book L. S. N^o 1 on page 324 Given under my hand at Oakville the 5th day of January A. D. 1876

R. H. Brown
Surveyor, Lincoln District

File 8.
Mc number 6

RH Brown's SK of AB & M. Sur.
Jan. 5. 1876.

John Dan Haffley
J. M. Lewis

counter 31350