

SKETCH FILE  
35.  
McMullen Co.



Application for Certificate  
Designating the Geographical  
Center of McMullen Co.

GENERAL LAND OFFICE  
AUSTIN, TEXAS

counter 31402



1168  
48  
49

OFFICE  
OF

1340  
**COUNTY JUDGE**  
McMULLEN  
County, Texas.

WELCH-CLARKE, S.A.

~~W. B. MARTIN~~, D. B. MARTIN.  
COUNTY JUDGE

Tilden, Texas, SEPTEMBER 13th, 1915.

HON. J. T. ROBINSON.  
LAND COMMISSIONER.  
AUSTIN.  
TEXAS.

Dear Sir:

There is a proposition about to be submitted to the voters of McMullen County for the purpose of removing the County-seat of said County to center of same.

Will you kindly designate the Geographical center of McMullen County and notify me of same.

Thanking you in advance.

Yours very truly.

D. B. Martin .County Judge.

McMullen County Texas.

Complying with your letter of the 13<sup>th</sup> inst. I herewith enclose Certificate designating the Geographical Center of McMullen County -

RECEIVED  
SEP 15 1915  
McMULLEN COUNTY TEXAS

9/21/15 Clark

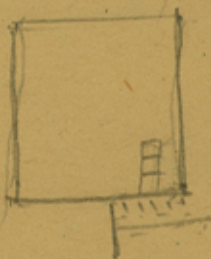
counter 31403

M<sup>c</sup>Mullen Co. <sup>sb. File #35</sup>

---

See Letter Book  
1168, pages 48 + 49

---



The State of Texas }  
General Land Office } J. J. H. Walker  
Chief Clerk and acting Commissioner of  
the General Land Office of the State of Texas,  
having been requested by letter dated  
September 13<sup>th</sup> 1915, signed D. B. Martin,  
County Judge, Mc-Mullen County, Texas, to  
designate the Geographical Center of Mc-Mullen  
County, do hereby Certify that from the  
maps of Mc-Mullen County, and other data  
on file in this office,

I have  
ascertained the geographical center  
of Mc-Mullen County, and that upon  
the official maps of said county it  
is a point within the limits of Survey  
No. 7, Certificate No. 418, H. T. & B. R. R.  
Co., Block No. 4 of which, by scale, is  
930 varas west and 200 varas  
south of the north east corner of  
said survey.

In testimony whereof I herewith  
set my hand and affix the seal of  
the said office this 24 day of  
September A. D. 1915

Commissioner of the General Land Office.