

Sketch file 5

---

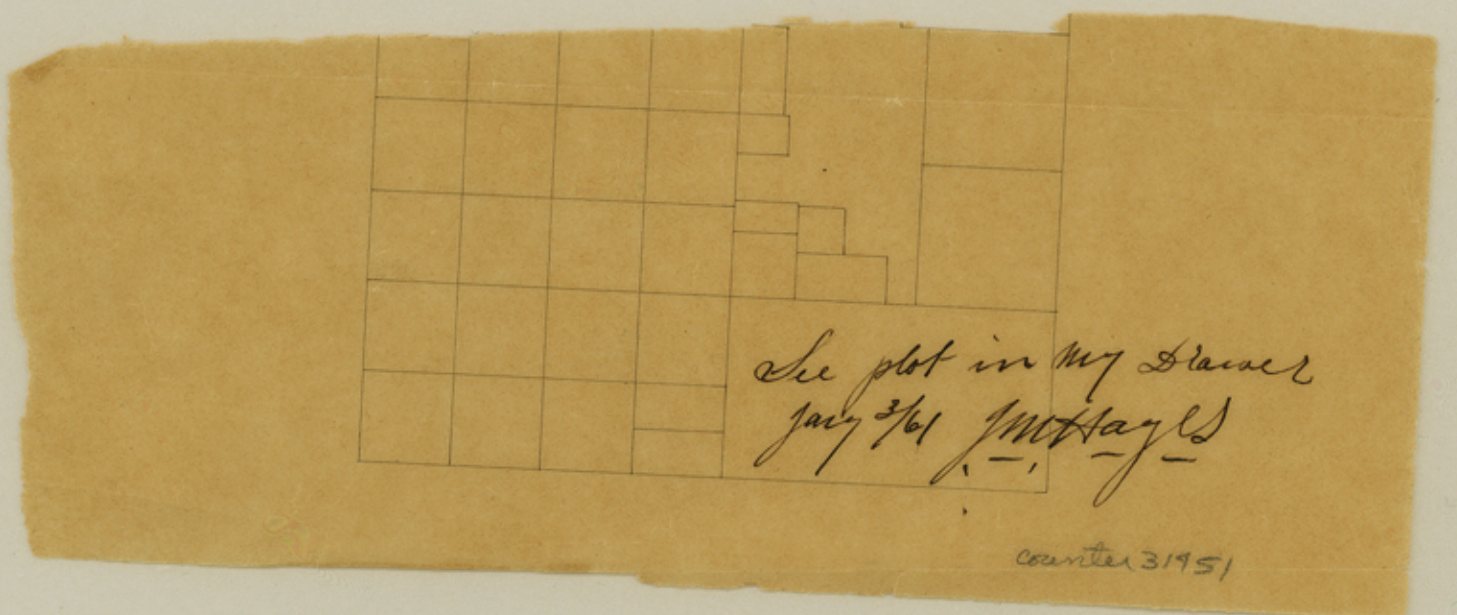
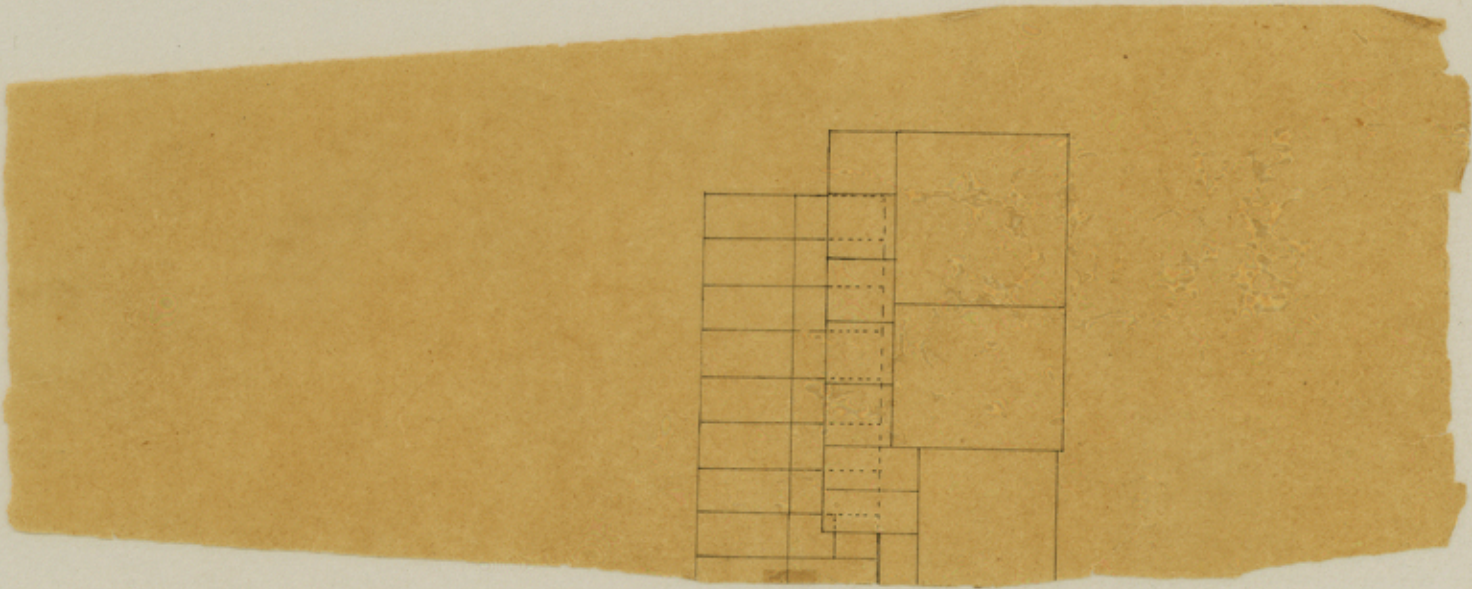
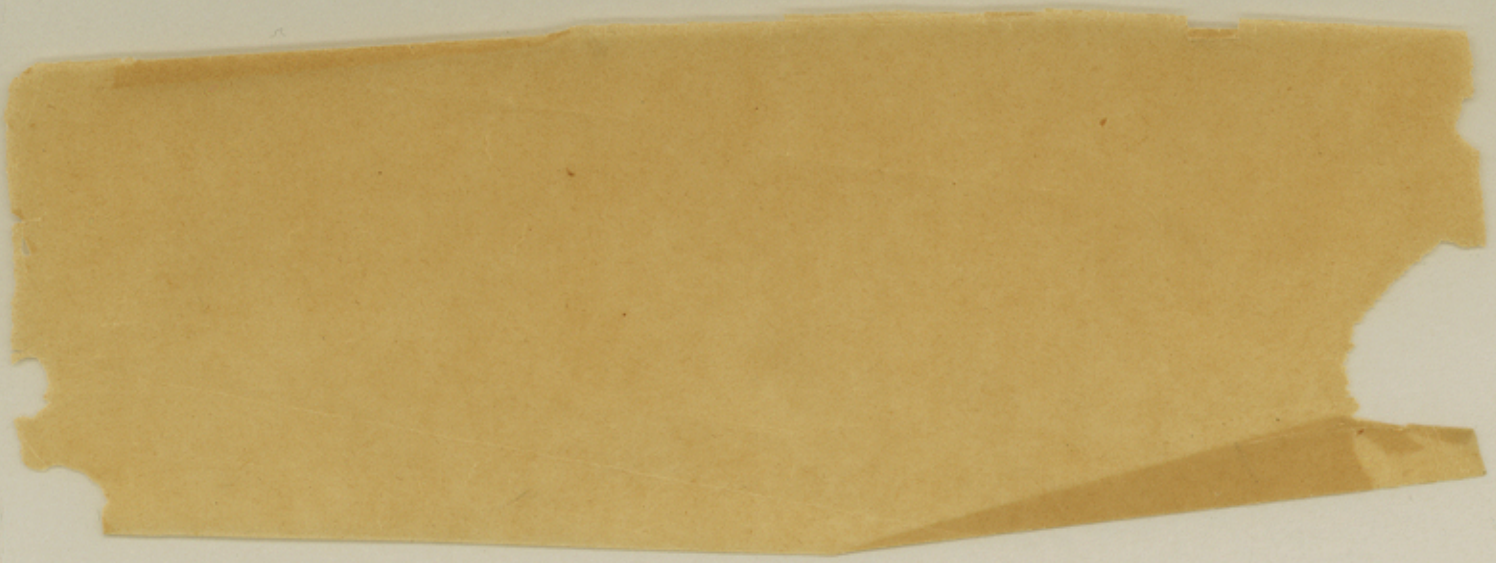
Medina County

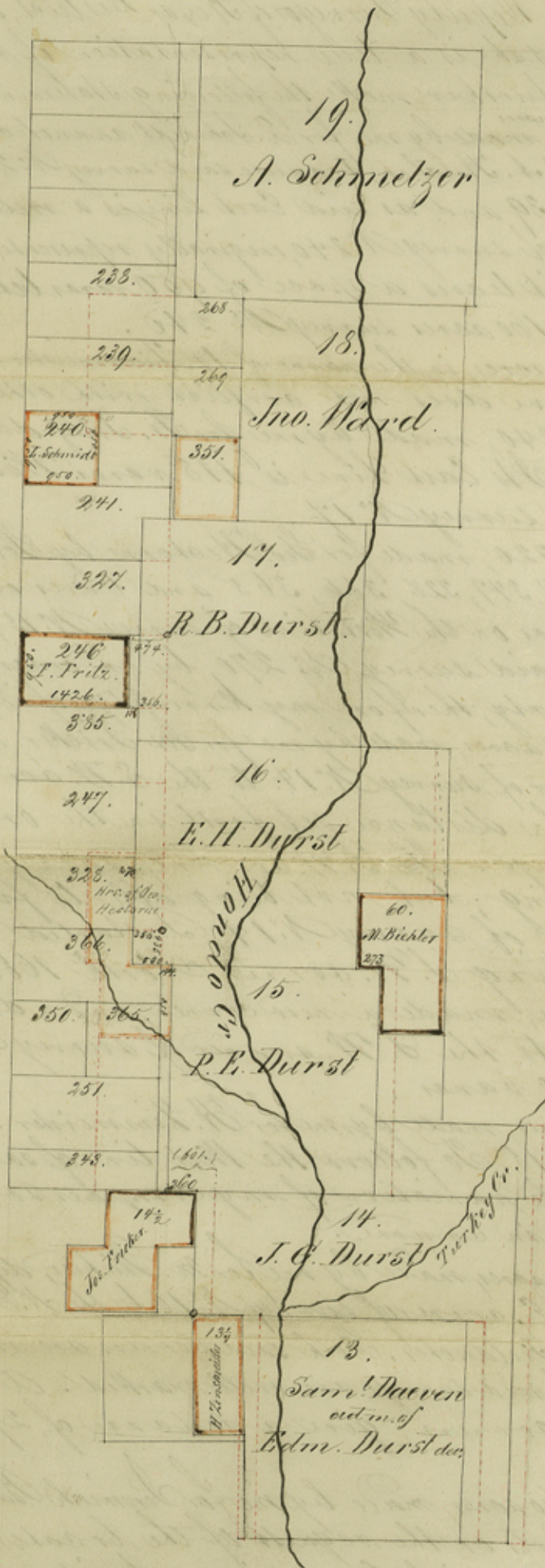
---

Jan'y 3/61

---

Sketch of Surveys on  
Londo Cr. and State,  
ment of Surveys  
thereto  
South of New Fountain.





Rec'd July 3/61  
J. W. Hayes

William Nylius, Deputy Surveyor of Pecos District, do hereby certify, that the foregoing Sketch, is a true representation of surveys, made by me years ago. I further make the following statements:

Survey N<sup>o</sup> 240 of 160 <sup>acres</sup>, made by me for E. Schmidt, cannot conflict with survey N<sup>o</sup> 269, in the name of C. A. & H. Kuchel, because said survey N<sup>o</sup> 269 begins on the East line of survey N<sup>o</sup> 239 and as said East line is a well established one, and also the East line of survey N<sup>o</sup> 240, originally represented on the map, as a 320 acres survey — it leaves a space of 950 varas between it and the East line of the 160 acres survey N<sup>o</sup> 240.

Survey N<sup>o</sup> 351, of 160 acres, in the name of W. Finsmeiter, made by Potchinsky — I believe does not conflict with other surveys.

Survey N<sup>o</sup> 246, of 240, made by me for F. Fry does not conflict with Survey N<sup>o</sup> 17. Its East line is 118 varas West from the West line of said survey N<sup>o</sup> 17.

Survey N<sup>o</sup> 270 of 320, made for Geo. Heaton by Potchinsky, conflicts with surveys N<sup>o</sup> 347, 328, 366, 365 and leaves only a space of 114 varas by 950 varas on the West line of survey N<sup>o</sup> 15, as Sketch shows. I had to examine said survey N<sup>o</sup> 270, by an order of the District court of Medina County, therefore my knowledge of its condition.

Survey N<sup>o</sup> 14<sup>1/2</sup> of 320 acres, made by me for Mr. Fricker, calls for 360 varas from the N.W. corner of survey N<sup>o</sup> 14, to the S.W. corner of survey N<sup>o</sup> 15, contrary to the distance set forth in the original Field notes of said surveys. The S.W. corner of survey N<sup>o</sup> 15 is well shown by one bearing, but not being able to find the bearings of the N.W. corner of survey N<sup>o</sup> 14, I started from its, at present yet existing S.W. corner North 1600 varas on a well established line, made a new corner, and a double measure, went from there to the S.W. corner of survey N<sup>o</sup> 15, gave a distance of 360 varas.

Survey N<sup>o</sup> 134 of 160 acres, made by me for H. Finsmeiter differs in course with the old survey N<sup>o</sup> 15. To follow the West line of said survey N<sup>o</sup> 13, I had to change the variation of my compass so much to cause said difference in course.

Survey N<sup>o</sup> 60 of 320 acres, made by me for M. Pichter, differs in one of its distances: from the S.E. corner of survey N<sup>o</sup> 16 to the N.E. corner of survey N<sup>o</sup> 15, from the old Field notes. Both said corners are well established, also the East lines of said surveys are well marked. A double measurement between the said corners, give a distance of 273 varas instead of 510 varas.

Survey N<sup>o</sup> 175, of 960 acres, made by me for Jeremiah Bailey — I had to make several offsets on the request of the locator, to take up the good land round high Mountains. As it was customary to make such offsets, to exclude high Hills or mountains — I found no harm in making said survey N<sup>o</sup> 175, in the shape, as it is made in.

William Nylius

D. S. B. R.

Castroville December 27 1860