

File 6. ~~#~~ 6

Medina County.

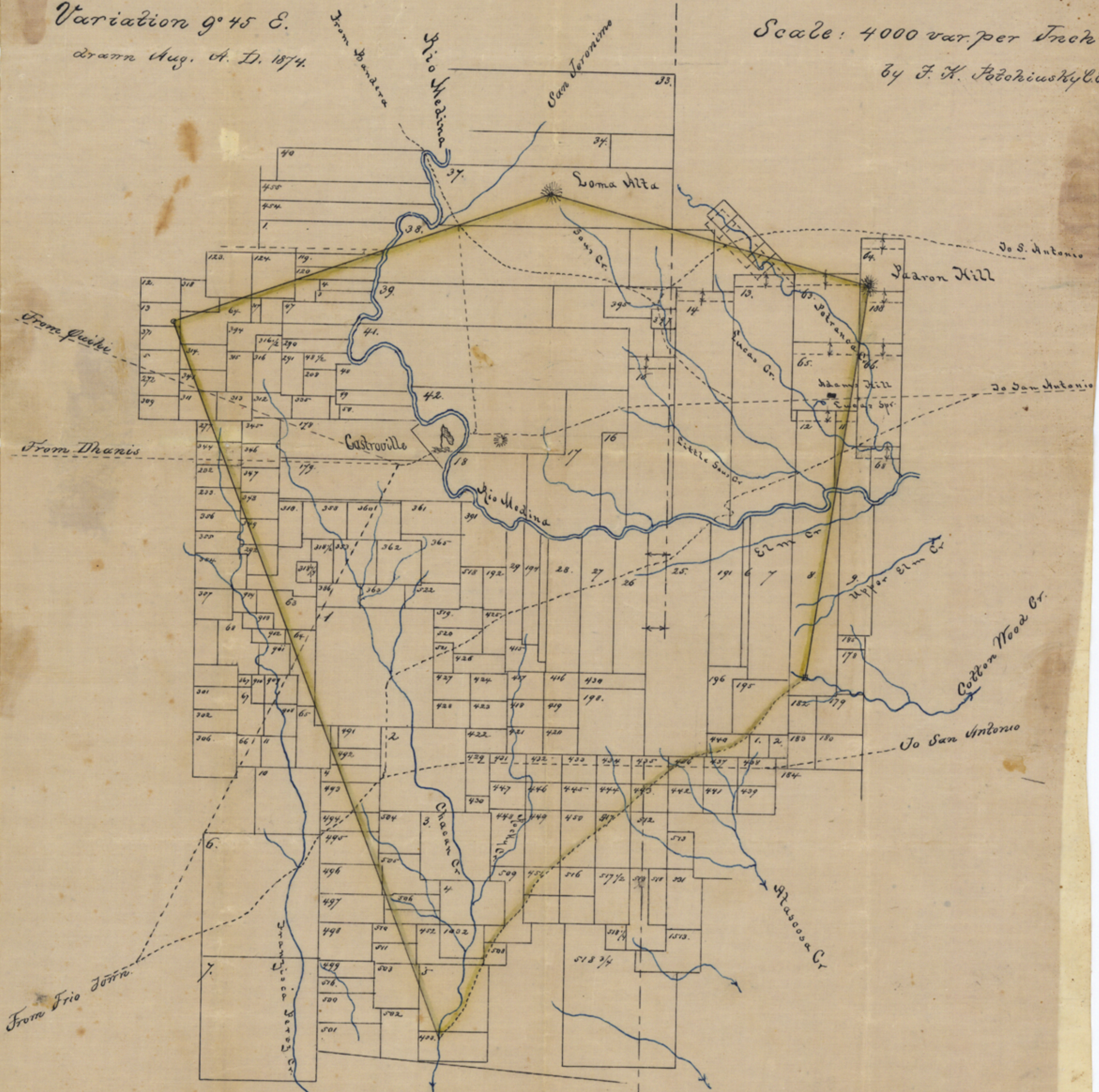
Resurvey and Sketch
of the McMillen Grant.

Filed Nov 19/74.
Rhoads Disher,
Chy. Sec.

M^c Miller's Grant

Variation 9° 45' E.
 drawn Aug. A. D. 1874.

Scale: 4000 var. per Inch
 by F. H. Potchinsky C.E.



Filed in my office Nov 4th 1874
 L. C. Navarro
 Dist. Sur. B. D.