

W. W. STUDDERT  
MEMBER  
AMERICAN SOCIETY OF  
CIVIL ENGINEERS

*St. File 1770*

*D-220*

REGISTERED ENGINEERS  
& LAND SURVEYORS

ARIZONA  
COLORADO  
IDAHO  
LOUISIANA  
MONTANA  
NEVADA  
NEW MEXICO  
OKLAHOMA  
TEXAS  
UTAH  
WYOMING

# STUDDERT ENGINEERING CO.

CIVIL ENGINEERS

TELEPHONES 4-8582 & 2-1373

221 SOUTH COLORADO

MIDLAND, TEXAS

March 1, 1955

RECEIVED

MAR 3 1955

REFERRED TO MAP

Honorable J. Earl Rudder, Commissioner  
of the General Land Office  
State of Texas  
Austin, Texas

Dear Sir:

With reference to your letter of February 24, 1955, concerning field notes of three tracts of land in the South 1/2 of Section 14, Block 41, Township 2-S, T. & P. Ry. Co., of Midland County, Texas, we are writing this explanation.

The 3/4" I. P. for the Southwest Corner of the B. M. Holt Tract, described as the West Middle Part of the South Part of the South 1/2 of Section 14, is N74°23'E 669.6 varas from the 1" I.P. for the Southeast Corner of Section 14, by accurate ground measurement. This 3/4" I. P. at the Southwest Corner of the B. M. Holt Tract is the Patented Southeast Corner of the 10 acre tract File 151527.

The 2" I. P. for the Southeast Corner of the Nathan Heidelberg Tract described as the East Middle Part of the South Part of the South 1/2 of Section 14, is N74°23'W 503.1 varas from the 1" I. P. for the Southeast Corner of Section 14, by accurate ground measurement. This 2" I. P. for the Southeast Corner of the Nathan Heidelberg Tract is the Patented Southwest Corner of the 60 acre tract, File No. 151517.

The Northwest Corner of the City of Midland Tract is 955.0 varas N15°05'W from the Southwest Corner of Section 14, by accurate ground measurement, and is also the Southwest Corner of the 169.6 acre tract, File No. 148789.

As these monuments were recovered on the ground and distances as shown in our field notes reflect their actual ground position, it is our opinion that the corrections should be made in the Patents which are in error.

Sincerely,

STUDDERT ENGINEERING CO.

*W. W. Studdert*  
W. W. Studdert

WWS/lm  
cc: Mr. Clovis Chapple, Jr.  
Stubbeman, McRae & Sealy  
Midland, Texas

Da

counter 31582



General Land Office

State of Texas

Austin

14

J. EARL RUDDER, COMMISSIONER  
DENNIS WALLACE, CHIEF CLERK

February 24, 1955

Studdert Engineering Company  
221 South Colorado  
Midland, Texas

Attention: Mr. W. W. Studdert

Dear Mr. Studdert:

This will acknowledge receipt of your letter of explanation dated February 15, 1955 in connection with the Survey of certain tracts of land out of Section 14, T&P RY. CO., Block 41, Township 2-S, in Midland County.

If the corners referred to in the above surveyors report were identified in their relative positions to the patents as indicated on the enclosed sketch, please so state therein. The concern we have is that no overlap be made with the patents.

Please return your report, sketch and field notes to this office, together with \$2.00 for filing fee (\$1.00 has been paid for the East Middle Part of South Part of S/2) and these instruments will be filed of record.

Your surveyors report is returned herewith so that you may comply with the above.

Sincerely yours,

J. EARL RUDDER, COMMISSIONER  
OF THE GENERAL LAND OFFICE

VES:mlc  
Enclosures  
Files: Sch. 89992, 151544, 151671

cc: Stubbeman, McRae & Sealy  
Petroleum Life Building  
Midland, Texas

RECEIVED

MAR 3 1955

REFERRED TO MAP <sup>55.0</sup><sub>47.5</sub>  
7.5

Da'

counter 31583

2-85  
Doubtful  
24 File  
607

W. W. STUDDERT  
MEMBER  
AMERICAN SOCIETY OF  
CIVIL ENGINEERS

*no act*

STUDDERT ENGINEERING CO.

CIVIL ENGINEERS

221 SOUTH COLORADO  
MIDLAND, TEXAS

February 15, 1955

TELEPHONES 4-8682 & 2-1373

REGISTERED ENGINEERS  
& LAND SURVEYORS

ARIZONA  
COLORADO  
IDAHO  
LOUISIANA  
MONTANA  
NEVADA  
NEW MEXICO  
OKLAHOMA  
TEXAS  
UTAH  
WYOMING

D-220

RECEIVED

FEB 16 1955

REFERRED TO MAP

Honorable J. Earl Rudder, Commissioner  
of the General Land Office  
State of Texas  
Austin, Texas

Dear Sir:

With reference to your letter of February <sup>24</sup> 8, 1955 to  
~~Stubbeman, McRae & Sealy~~ concerning field notes of three tracts  
of land in the South 1/2 of Section 14, Block 41, Township 2-S,  
T. & P. Ry. Co., Midland County, Texas, we are writing this ex-  
planation.

The 3/4" I. P. for the Southwest Corner of the B. M. Holt  
Tract, described as the West Middle Part of the South Part of the  
South 1/2 of Section 14, is  $N74^{\circ}23'W$  669.6 varas from the 1" I.P.  
for the Southwest Corner of Section 14, by accurate ground measure-  
ment.

The 2" I. P. for the Southeast Corner of the Nathan Hedielberg  
Tract described as the East Middle Part of the South Part of the  
South 1/2 of Section 14, is  $N74^{\circ}23'W$  503.1 varas from the 1" I.P.  
for the Southeast Corner of Section 14, by accurate ground measure-  
ment.

The Northwest corner of the City of Midland Tract is 955.0  
varas  $N15^{\circ}05'W$  from the Southwest Corner of Section 14, by accurate  
ground measurement.

As these monuments were recovered on the ground and distances  
as shown in our field notes reflect their actual ground position,  
it is our opinion that the corrections should be made in the patents  
which are in error.

Sincerely,

STUDDERT ENGINEERING CO.

*W. W. Studdert*  
W. W. Studdert

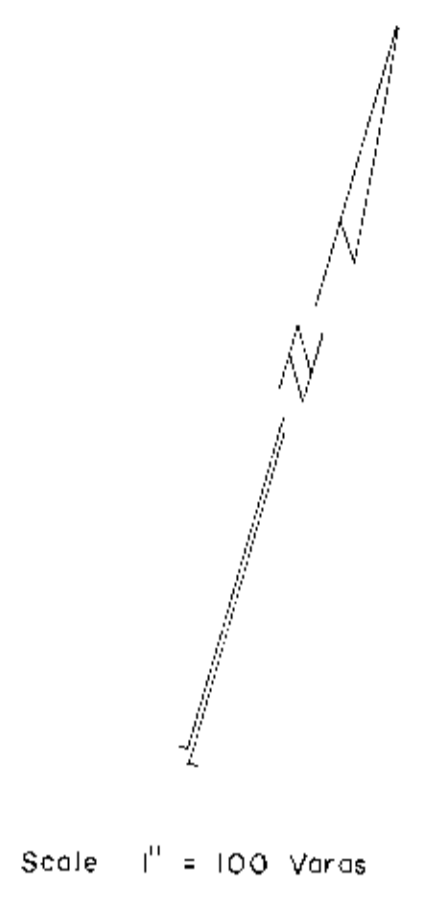
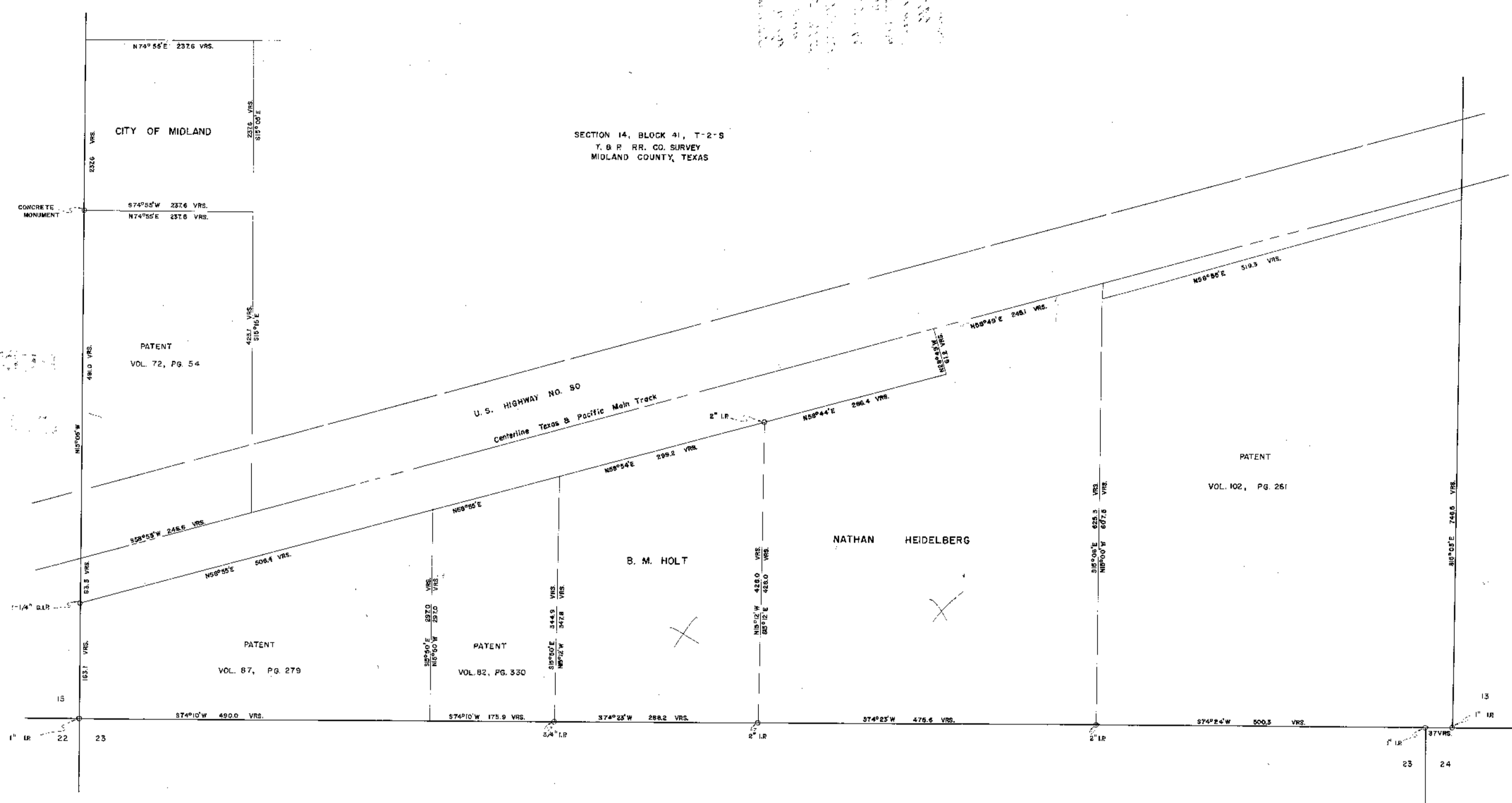
WWS/lm

cc: Mr. Clovis Chapple, Jr.  
Stubbeman, McRae & Sealy

Da ✓  
counter 31584

RECORDED  
 1955 JAN 10

SECTION 14, BLOCK 41, T-2-S  
 T. & P. RR. CO. SURVEY  
 MIDLAND COUNTY, TEXAS



NOTE  
 PATENT REFERENCES ARE TO THE DEED RECORDS  
 OF MIDLAND COUNTY.  
 BEARINGS ON THE CITY OF MIDLAND TRACT, THE  
 B. M. HOLT TRACT, AND THE NATHAN HEIDELBERG  
 TRACT ARE FROM SOLAR OBSERVATION BY  
 STUDDERT ENGINEERING CO.

I, W. W. STUDDERT, LICENSED STATE LAND SURVEYOR, STATE  
 OF TEXAS, HEREBY CERTIFY THAT THIS SURVEY WAS MADE  
 ON THE GROUND UNDER MY SUPERVISION AND THAT THIS  
 PLAT IS TRUE AND CORRECT. JANUARY 6, 1955

*W. W. Studdert*  
 W. W. STUDDERT



WORKING SKETCH  
 SOUTH HALF  
 SECTION 14, BLOCK 41  
 T-2-S  
 T. & P. RR. CO. SURVEY  
 MIDLAND COUNTY, TEXAS