

~~Alexor J. J. J.~~
 Sketch Files
 File No. 18
 Midland County.

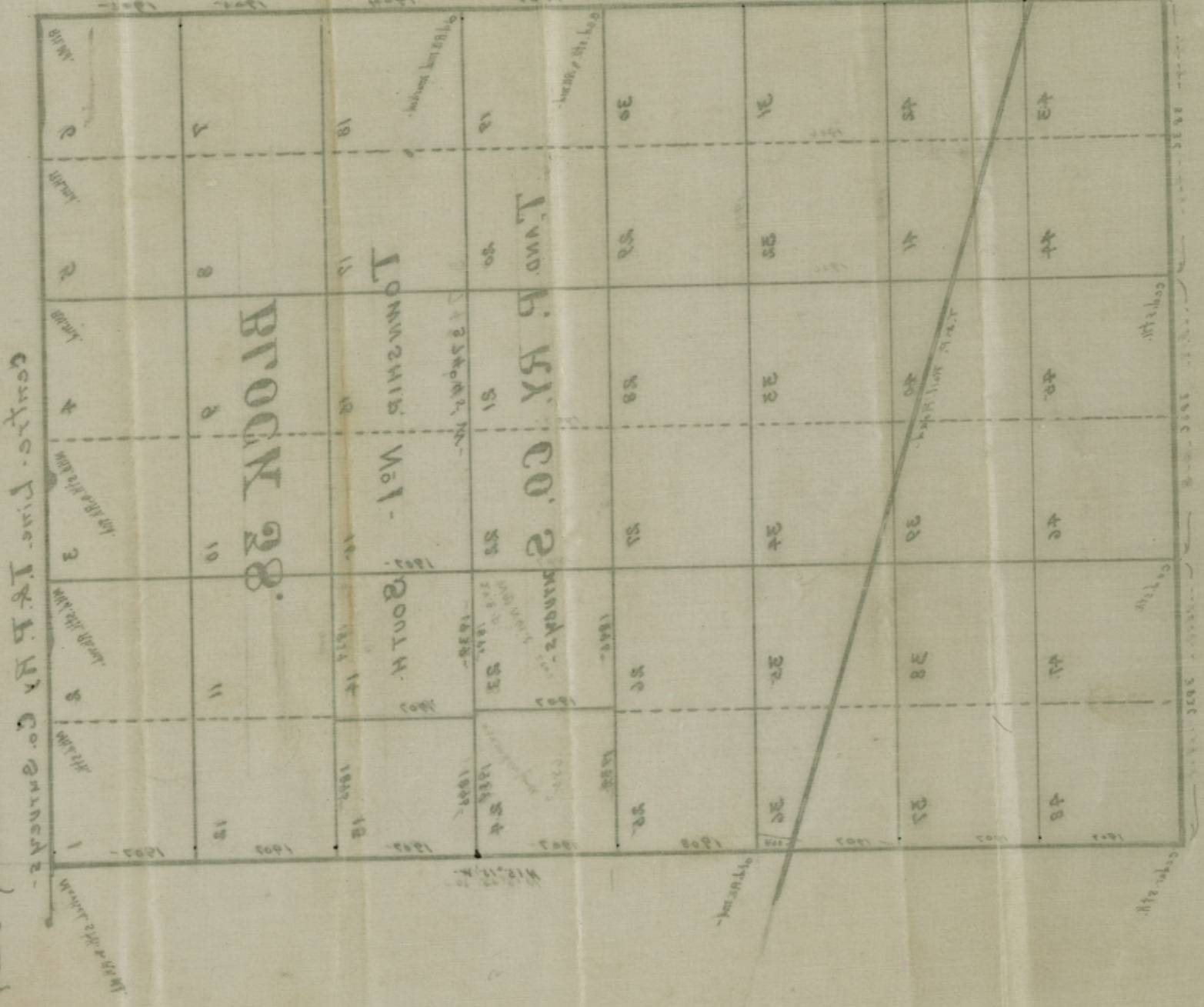
T. & P. Ry. Co.
 Cst. M.
 Filed July 14, 1916.
 J. D. Robinson
 Com'r.
 J. D. Robinson
 File Clerk.

T. & P. Ry. Co.
 Blk. 38
 Tsp. 15
 By Robt. E. Estes

SKEETCH

County 31586

The Sept 1916
 one tract described and covered set forth
 and that the river boundaries and corner
 have a corner mark of the same set forth
 & that copies of the former sketch was taken
 & that the same were given to the
 Midland County Surveyor



311

312