

JOHN L. PATTERSON, COUNTY JUDGE
AND EX-OFFICIO SCHOOL SUPT.

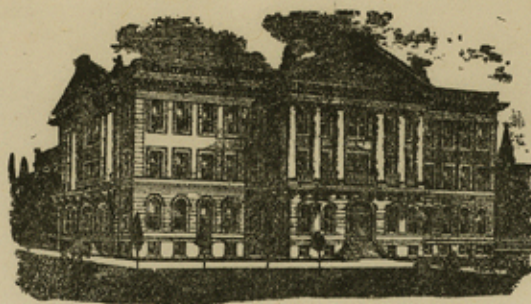
MRS. EARL SUMMY, COUNTY
AND DISTRICT CLERK

F. D. REYNOLDS, SHERIFF, TAX
ASSESSOR AND COLLECTOR

MRS. BERTHA WEATHERS, TREAS.

A. T. PRIBBLE, COUNTY ATTORNEY

J. C. LONG, SURVEYOR



J. Y. TULLOS, COMMISSIONER
PRECINCT NO. 1, GOLDTHWAITE, TEXAS

J. A. HAMILTON, COMMISSIONER
PRECINCT NO. 2, RT. 3, GOLDTHWAITE

K. B. HENRY, COMMISSIONER
PRECINCT NO. 3, MULLIN, TEXAS

J. F. DAVIS, COMMISSIONER
PRECINCT NO. 4, RT. 1, GOLDTHWAITE

OFFICE OF

J. C. LONG

COUNTY SURVEYOR

MILLS COUNTY COURT HOUSE

Box 387

GOLDTHWAITE, TEXAS

November 12, 1949.

Mr. C. A. Womack,

Route No.

Goldthwaite, Texas.

In Re of W. S. Mitchell Sur.

Dear Mr. Womack:- I wish to say that there is no doubt in my mind as to the location of the beginning point in the W. S. Mitchell Survey No. 71, now owned by you. One of the bearing trees is still on the ground and in good condition and I have seen the other bearing while it was standing and the stump remained in the ground until the last few years when it was removed because of its interference with traffic as it was located at the turn of the road near the W. corner of the Mitchell Survey. In running S 35 E from the beginning corner we did not find a stone mound nor an elm for corner with bearing trees at 1344 varas. Neither did we find the elm tree for corner with its bearings at 1390 varas as called for in the corrected Field Notes to the Mitchell Survey. However, we were in what had been the vicinity of a prolific growth of timber of all kinds at 1390 varas and at this point we placed a stake for the S corner of the Mitchell Survey, as called for in the Corrected Field Notes.

From this point, we ran N 55 E and at the end of this line which is 1368 varas, according to the Corrected Field Notes, we found a corner post at the corner of fence which undoubtedly was the point mentioned in the Corrected Field Notes as the E. corner of the W. S. Mitchell Survey. In this vicinity were the stumps of numerous Elm trees and the stump of an old Elm tree was lying at the foot of

counter 31674

2.

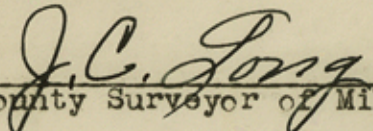
the corner post mentioned above. The bearing described as being N. 1 degree E. at this point would have been in an old field that is still cultivated and the major part of the old timber near this point had died or been deadened for a number of years past. No doubt, at the time of the survey, made for the correction of the Field Notes of the W. S. Mitchell Survey, the Elm marked "F" for corner could have been more easily identified, if standing, which it, no doubt, was. The soil at this point and in this vicinity is deep enough to support a vigorous growth of timber of any kind.

Reversing your call at this point, and using the variation called for in the original Field Notes, you would intersect the S. W. line of the Mitchell Survey 1390 varas from its beginning ^{from this same point} corner and continuing, with the calls of the Corrected Field Notes, you would arrive at the beginning point described in the original Field Notes of the W. S. Mitchell & Survey.

The S. corner of the Mitchell is near the improvements and also in an area near Turkey Creek where the land has been cleared of practically all growth except Pecan Timber. Therefore, all Elm, Spanish Oak and etc timber has been destroyed. Some of the stumps remain but none that you could identify as the corner or its bearings.

Since the Hughes Surveys tie in with the Mitchell Survey at every corner of the Mitchell, I cannot conceive of any remote possibility of any vacant land that has never been patented, within or adjoining the Mitchell Survey.

Yours very truly,


County Surveyor of Mills Co.

counter 31675

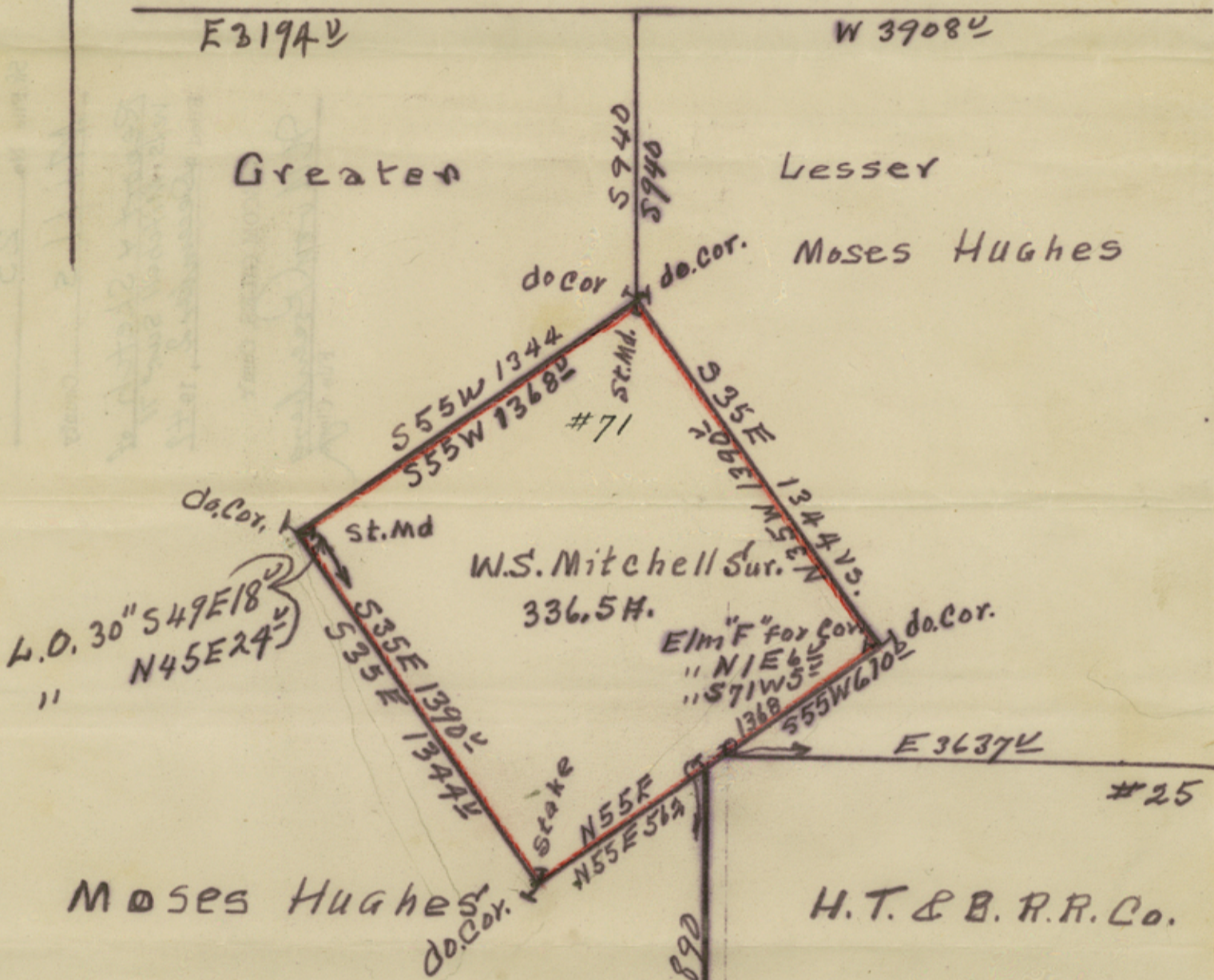
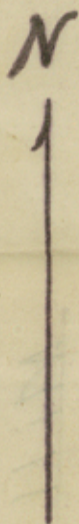
RECEIVED

f-204 1st 5000

NOV 26 1949

S-19

GENERAL LAND OFFICE



L.O. 30" S 49 E 18"
" N 45 E 24"
"

Plat of W.S. Mitchell Sur.

I, J. C. Long, Surveyor of Mills County, Texas, do hereby certify that the above Plat shows the true relative positions of the surveys indicated hereon just as I found them on the ground by actual survey. This 12th Day of November, 1949.

J. C. Long
Surveyor of Mills County, Texas.

Sk. File No. 25

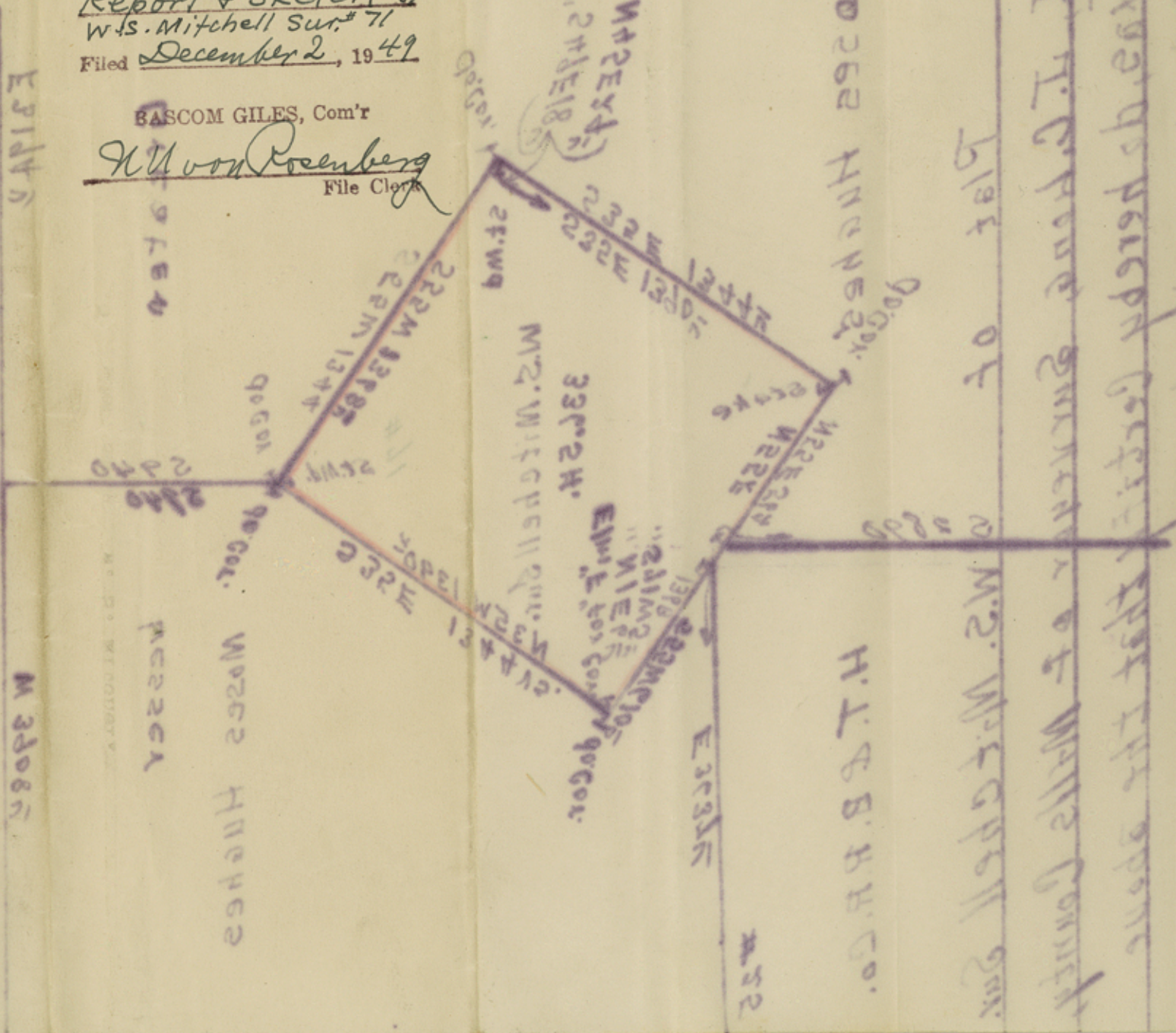
Mills County

Report & Sketch of
W.S. Mitchell Sur. # 71

Filed December 2, 1949

BASCOM GILES, Com'r

W. von Rosenberg
File Clerk



of the survey as indicated hereon
that shows the true relations between
the above parcels and the same
I.T.C. B. H. H. Co. Sur.
Plot of
W.S. Mitchell Sur.

W.D. 262 H.N.C. H.B.S.
90° Cor.
H.T.C. B. H. H. Co.

Division of Mills County
J.C. Baird

RECEIVED

GENERAL LAND OFFICE

1001 So. 18th St.