

MITCHELL CO SKETCH  
FILE NO 2

BLOCKS 26-27-28  
AND 27.

SURVEYED BY  
C. H. EARNEST  
CO SURVEYOR.

FILED IN C.L.O.  
NOV 21<sup>ST</sup> 1888  
(SIGNED) R. C. SHELLEY  
CH. CLK.

X R<sup>1</sup>

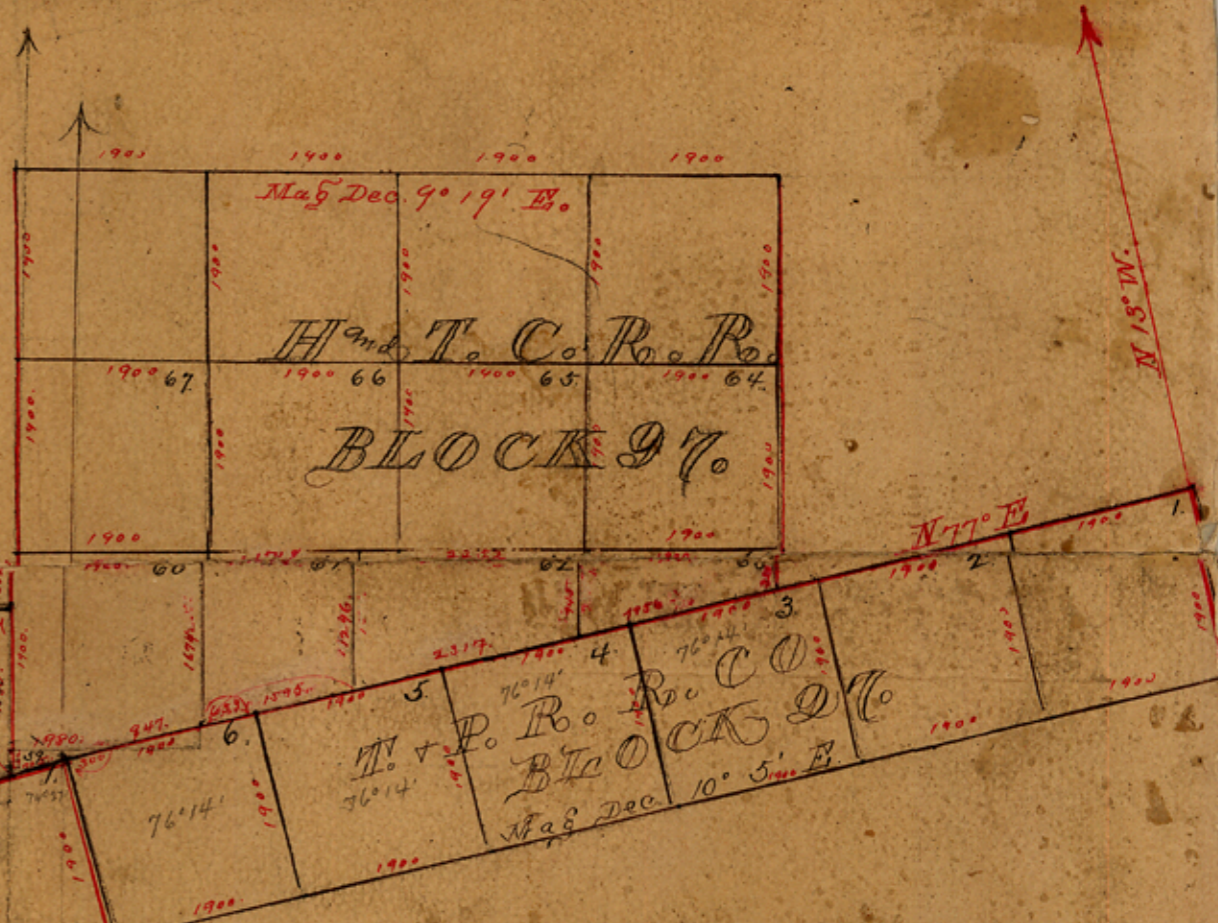
REBOUNDING MAY 1 - 1946  
U.S.

counter 31688

H. W. A. R. D. CO

Mag Dec 8° 52' E.  
Mag Dec 10° 51' E.

MITCHELL COUNTY TEXAS



Approved.  
 C. H. Earnest, County Surveyor  
 Mitchell County, Texas.

XR