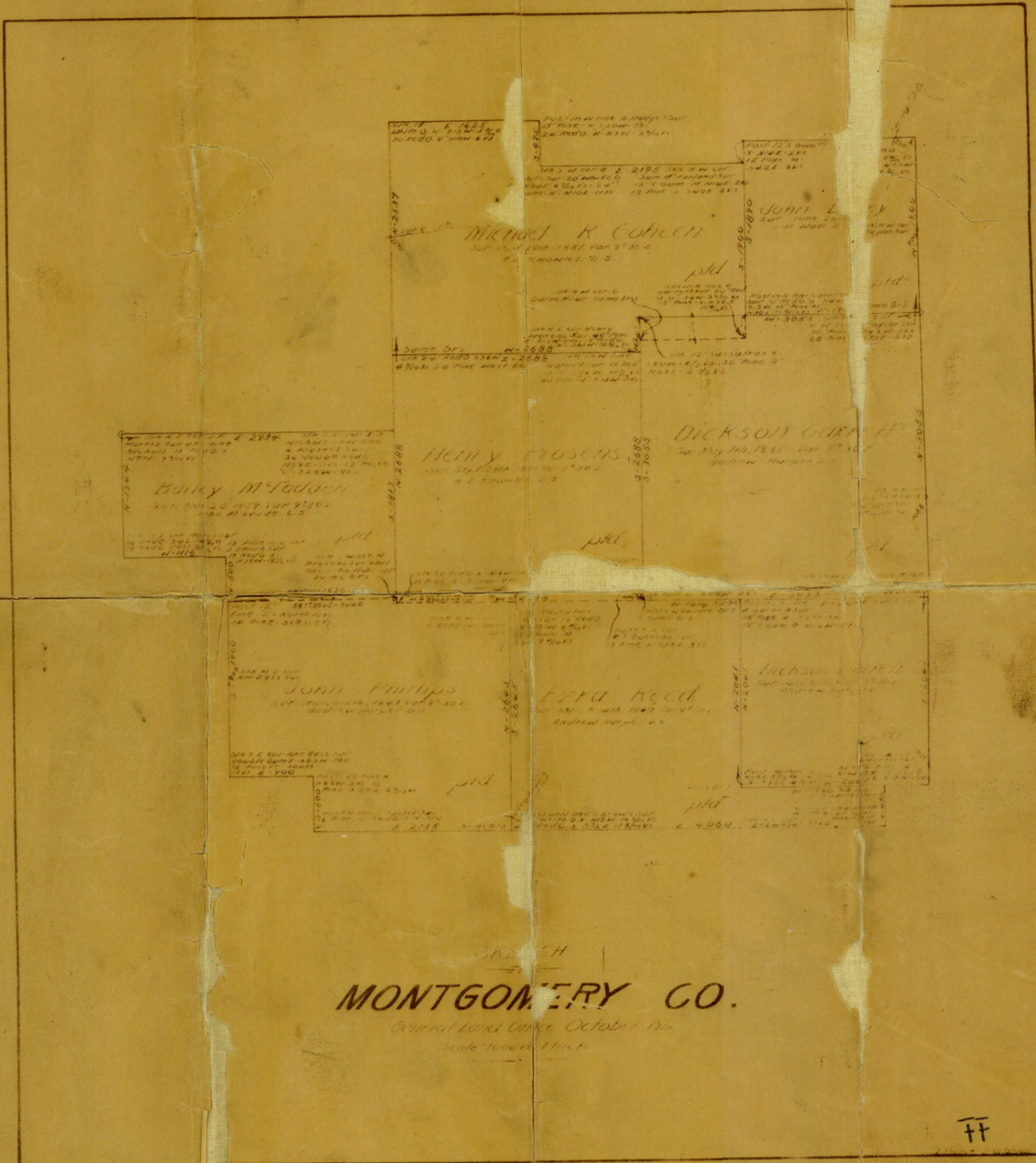


17,

Mutilated WK, SK, around
the MR Gohen tea, -
October 1912,

Montgomery Co

counter 31832



Michael R. Cohen
 SUR. MAP 1910, 1951, Vol. 9th 30 2
 S. C. 30012, U.S.

Henry Prosser
 SUR. MAP 1910, 1951, Vol. 9th 30 2
 S. C. 30012, U.S.

Dickson Gurnett
 SUR. MAP 1910, 1951, Vol. 9th 30 2
 S. C. 30012, U.S.

Bailey McFadden
 SUR. MAP 1910, 1951, Vol. 9th 30 2
 S. C. 30012, U.S.

John Phillips
 SUR. MAP 1910, 1951, Vol. 9th 30 2
 S. C. 30012, U.S.

Ezra Reed
 SUR. MAP 1910, 1951, Vol. 9th 30 2
 S. C. 30012, U.S.

Jackson Gurnett
 SUR. MAP 1910, 1951, Vol. 9th 30 2
 S. C. 30012, U.S.

NORTH

MONTGOMERY CO.
 General Land Office, October 1910
 Scale 10000 Feet

FF

MONTGOMERY CO
SKETCH FILE 17

FF

counter 31834

MOUNTED 4-14-1939
W.S.