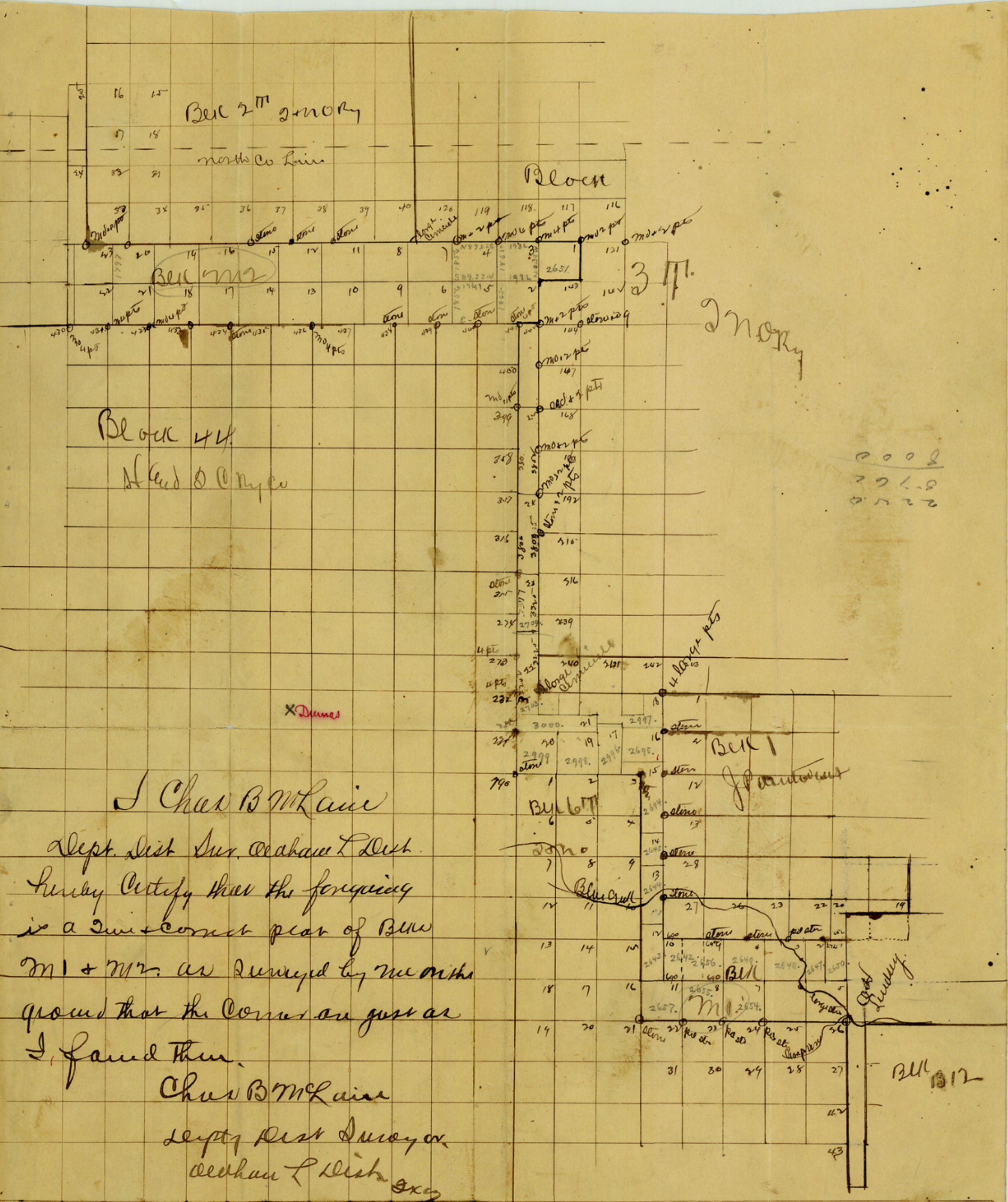


5.

Moore Co

Chas B McLains SK. of parts of  
BIK5, 2T, 3T, 1, M1, M2, & 44-

counter 31937



Bel 2<sup>nd</sup> 2<sup>nd</sup>

North Co Line

Block

Bel 3<sup>rd</sup>

3<sup>rd</sup>

2<sup>nd</sup>

Block 44

Head of Canyon

X Dunes

I Char B McLaire

deputy Dist Sur. Alabama T. Dist.  
 hereby certify that the foregoing  
 is a true & correct plat of Bel  
 m1 + m2 as surveyed by me on the  
 ground that the corners are just as  
 I found them.

Char B McLaire

deputy Dist Surveyor  
 Alabama T. Dist. 3<sup>rd</sup> ex

0002  
 2260  
 0522

Bel 1  
 J. Cantelano

Bel 6

Bel 12