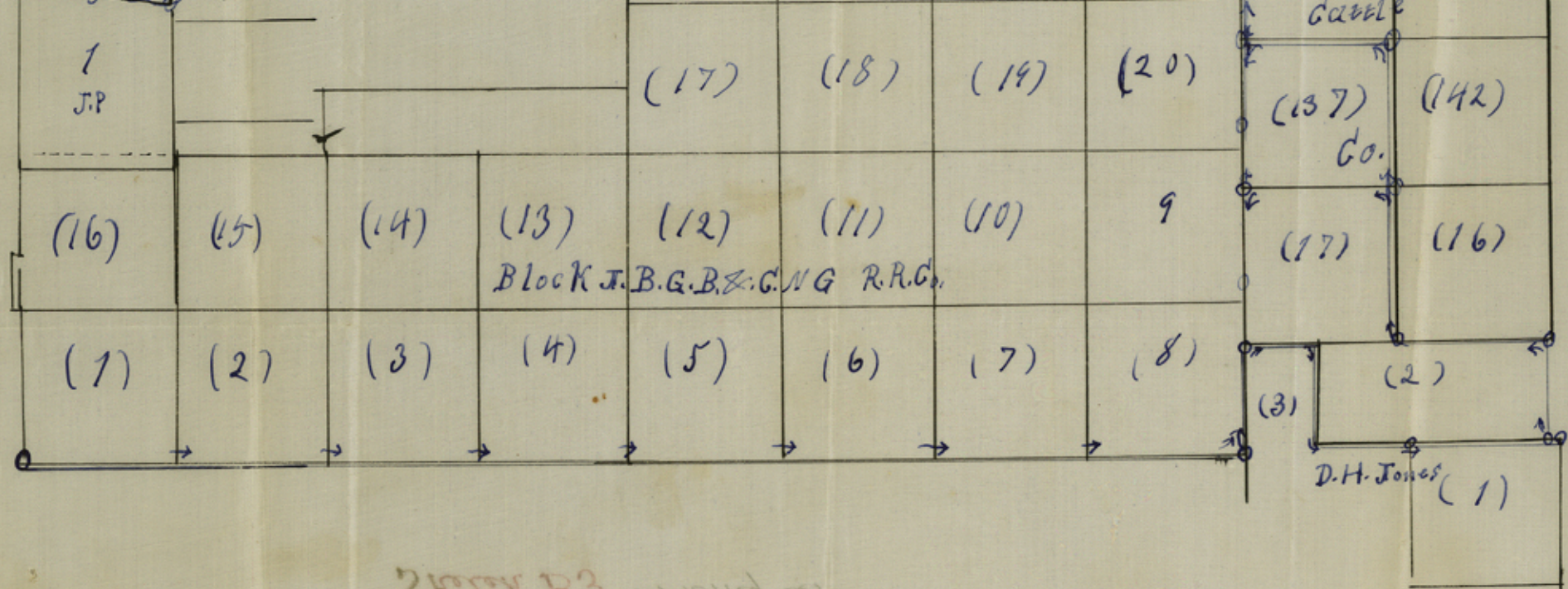
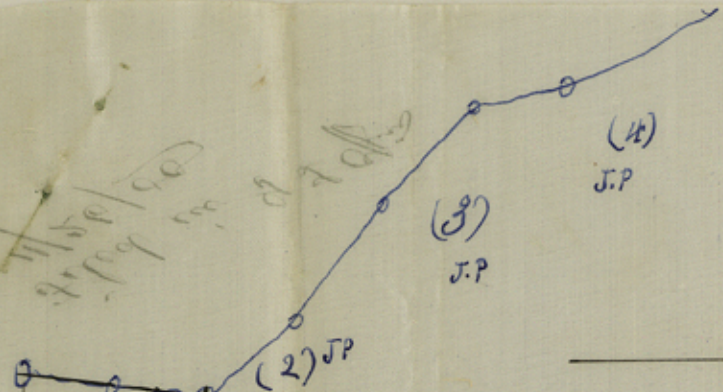


Sketch  
"B3"



J.H. Brady

25

(28)

(139)

(140)

(72)

(71)

(22)

(21)

(17)

(18)

(19)

(20)

(137)

(142)

(16)

(15)

(14)

(13)

(12)

(11)

(10)

9

(17)

(16)

(1)

(2)

(3)

(4)

(5)

(6)

(7)

(8)

(3)

(2)

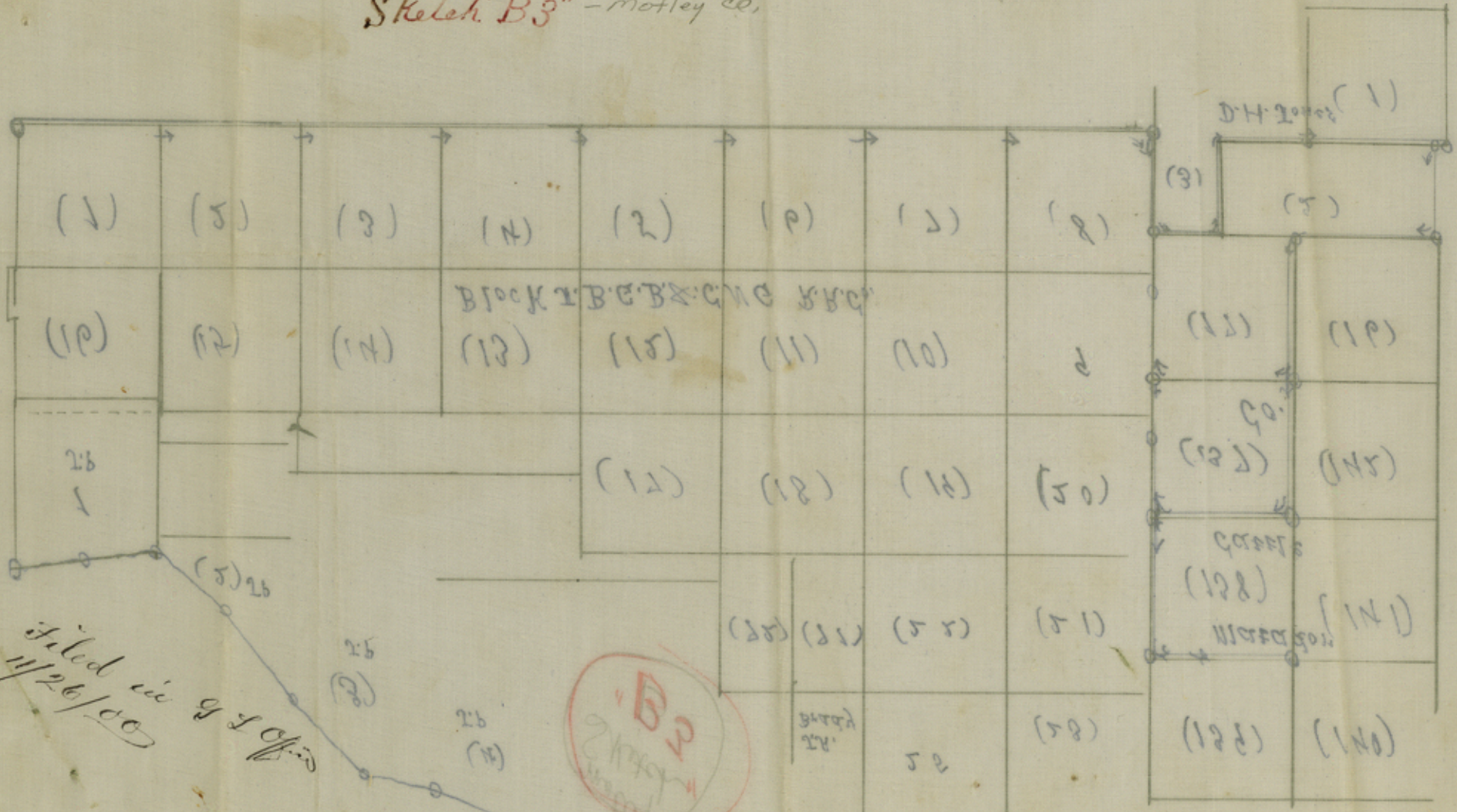
D.H. Jones (1)

Block B3 - way out

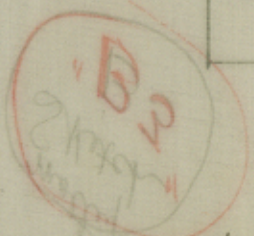
counter 31974

Sketch "B3" - motley co.

APR 12 1900



Filed in 9th office  
11/26/00



counter 31975

The State of Texas } Variation 10° 30' E.  
Matley County }

Field Notes of a connecting line Survey made in  
Block J. B. G. B. & C. N. G. R. R. Co. and Block H.  
D. H. Jones and Block M. Matador Cattle Co.  
to determine if any vacancy exists between said  
Block J. B. on the west and Blocks M. and H. on the  
East

Beginning at the N. E. Cor. of Sur. No. 1 Blk. No. I  
A. B. & M. this point is the S. W. Cor. of Survey No. 1  
Block No. J. B. G. B. & C. N. G. R. R. Co.

Thence East 1900 vrs. a point Thence E. 1900 vrs. a  
point Thence E. 1900 vrs. a point Thence E. 1900 vrs.  
a point Thence E. 1900 vrs. a point Thence E. 1900  
vrs. a point Thence E. 1900 vrs. a point Thence E.  
1900 vrs. a point Stone Mound on west line of sur.  
No. 3 Block H. D. H. Jones identified as the stone  
Mound called for in the field notes of said No. 3 D. H.  
Jones Thence N. at 176 vrs. a point (called a stake in field notes  
of No. 3) from which a mesquite bush on top of hill br. E. 112 vrs. at  
1426 vrs. pass a rock mound on edge of red hill Thence E.  
906 vrs. a point Thence South 1250 vrs. to a stake 300  
vrs. E. of a ravine Thence E. 1140 vrs. a stake ~~at~~ stone  
Mound identified as the N. W. Cor. of Sur. No. 1 Block H.  
D. H. Jones by its bearings vis. breaks of red bluff br. N.  
37 W. Top of tree br. N. Thence E. 1900 vrs. a point  
on open flat from which a mesq. br. N. 52 W. 46 vrs.  
identified as the N. E. Cor. of sur. No. 1 Block H. D. H.  
Jones Thence W. 152 vrs. to an old stone mound  
The S. E. Cor. of Sur. No. 2 D. H. Jones Thence N.  
1250 vrs. a stone mound on edge of Bluff Cap rock br.  
S. 63° E. 165 vrs. and a bluff point br. N. 48° W. and  
a cottonwood N. 88° E. Thence west 1900 vrs. a stone mound  
on slope of hill a cottonwood in ravine br. N. 8 1/2° E. 260 vrs.  
a cottonwood br. N. 18° E. 220 vrs. identified by these bearings  
as the S. E. Cor. of sur. No. 17 Matador Cattle Company  
Thence N. crossing Turtle holes at 475 vrs. at 950 vrs. a  
mound of stone at 1800 vrs. a stone mound whence a rock  
mound on S. 40° E. vrs. counter 31976

Thence N. 1400 vrs. a point Thence W. 1400 vrs. ~~and~~  
Manned of Entry a Gyp rock. Set in mound on north slope of ~~it~~  
toward a ravine from which a Gypsum rock mound brs.  
N. 57° E. vrs. on north side of ravine

Thence S. at 1088 vrs. a stone mound from which a  
red bluff brs. S. 20° E. another turtle hole Mountain  
brs. S. 57° E. (Conclusion this point is on the west boundary  
line of Sur. No. 137 Matador Cattle Company and is the  
stone mound mentioned in the field notes of Survey  
No. 137 as being on the west line of said Sur. 862 vrs.  
north of its S.W. corner and is in longitude with  
stone mound mentioned in field notes of Survey No. 3

D. H. Jones at the S. E. corner of survey No. 5 Blk J. B.)  
Returning to mound identified as the N.W. cor. of Sur. 137

Thence N. at 475 vrs. a stone mound of gypsum on East side  
of draw 25 vrs. from draw a cottonwood brs. S. 7° W. 75 vrs.  
at 1900 vrs. a gyp rock at head of a draw a rock point  
brs. S. 79° E. 120 vrs. and a Gypsum Rock in gulch brs.  
N. 61° E. 120 vrs. Thence E. 720 vrs. cross the prairie

at 1900 vrs. a stone mound on south bank of ravine identified  
as the N. E. cor. of Survey No. 138 this point is 125 vrs. south  
of ravine a white and red Bluff brs. N. 36° E. 200  
vrs. (Conclusion the East Boundary line of Survey No.

Block J. B. G. B. K. C. N. F. R. R. Co. is identical with  
the West Boundaries of Surveys No. 3 D. H. Jones  
Nos 17 ~~the~~ 137. 138 and 139 Matador Cattle Co.  
and that ~~the~~ ~~boundaries~~ exist between said  
Surveys

Surveyed from date to date May 1st to Nov. 1st  
1900

Mallet Co Sketches  
B-3  
B-3

Black J. B.  
Gal. B. & Co.  
N. G. Ry Co

J. C. Riley }  
J. A. Bardwell } chain courses  
Henry Pippins }  
Cliff. Rogers }  
Frank. Clenden }  
}

Filed in G. S. Office  
11/26/1900

I, H. Seay, County Surveyor of ~~the~~ ~~County~~ ~~Texas~~ do  
hereby certify that the foregoing Survey was made  
by me on the ground that the limits boundaries and  
corners with the marks natural and artificial are  
truly described in the foregoing plat and field notes  
just as I found them on the ground and that they are  
recorded in my office in Book 7 Pages 350, 351 and 352

This 12th day of Nov. 1900

- Note -  
This connects Blk J, Blk J B, T. H. Seay County Surveyor  
Blk H (D. H. Jones) + Blk M  
Matador Cattle Co, in Hootley Co  
South of Pease River -  
+ pertains to W. F. Scarborough's Lease.