

Sketch of  
North boundary line of Block No. 2

North boundary line of Block No. 2  
J. P. Poirerent

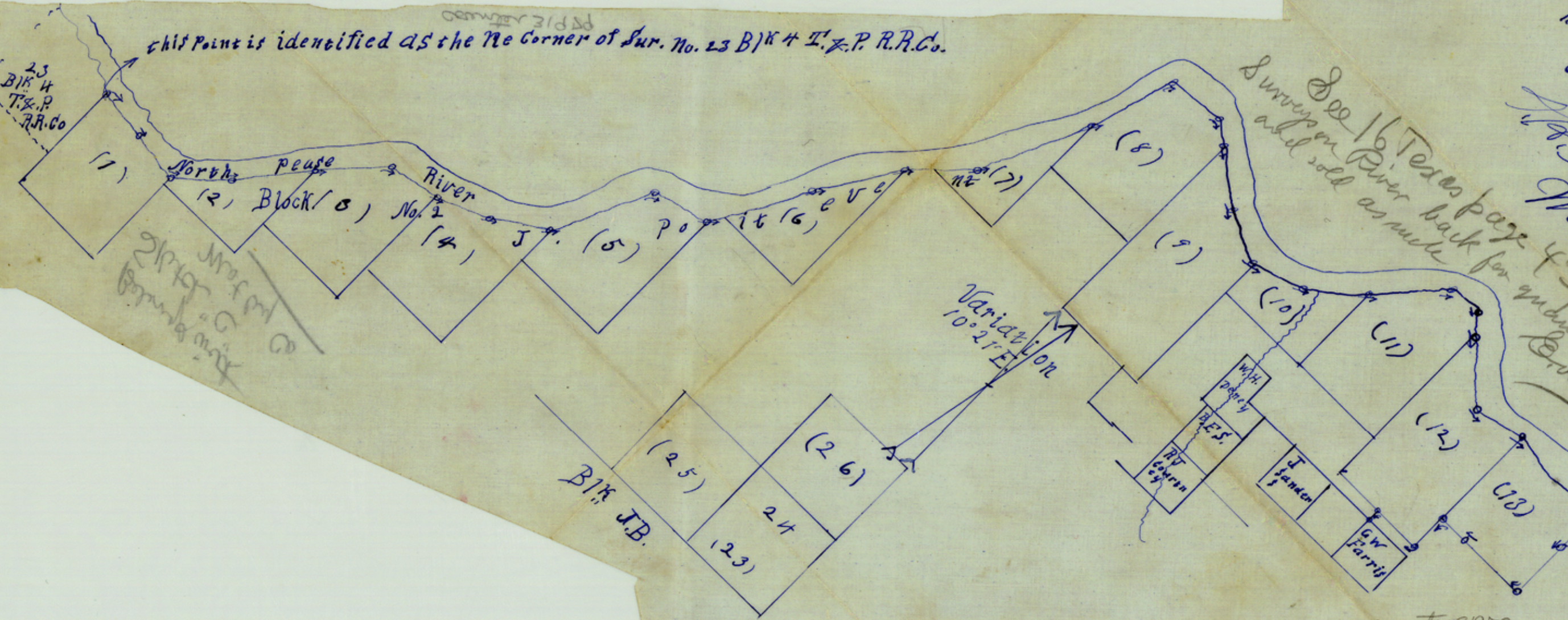
See 16 Texas page 439  
Williams vs Simpson  
quantity of 680 acres  
Brown & Reubens

this point is 24700  
Vrs. E. of Beginning  
omits to state from much  
North, tho' same can be had  
from his field notes filed  
with this sketch  
Wise

counter 31978

this point is identified as the Ne Corner of Sur. No. 23 BIK & I. & P. R.R. Co.

23  
BIK &  
I. & P.  
R.R. Co



Variation  
10° 21' E.

BIK J.B.

North Pease River  
Block (1) No. 2

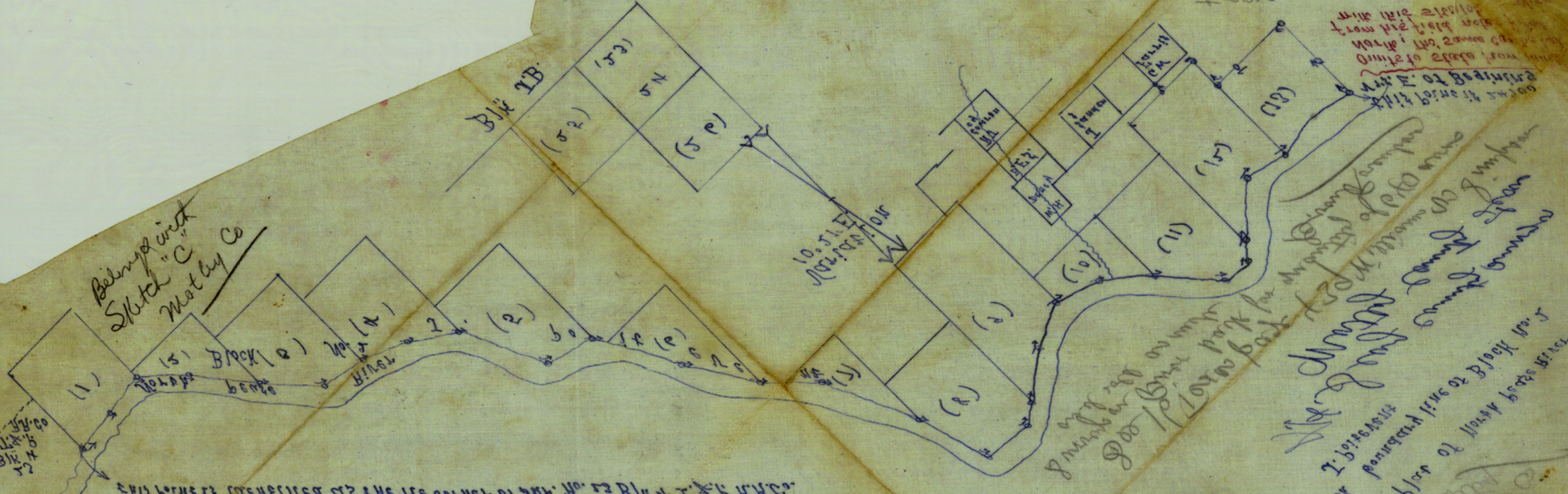
See 16 Texas page 439  
Williams vs Simpson  
quantity of 680 acres  
Brown & Reubens

counter 31978



STREETS

most of the  
of the  
of the  
of the  
of the



Belongs with  
Sketch "C"  
Motel Co

Block 15  
No. 15  
No. 16  
No. 17

Block (1) No. 1  
Block (2) No. 2  
Block (3) No. 3  
Block (4) No. 4  
Block (5) No. 5  
Block (6) No. 6  
Block (7) No. 7  
Block (8) No. 8  
Block (9) No. 9  
Block (10) No. 10  
Block (11) No. 11  
Block (12) No. 12  
Block (13) No. 13  
Block (14) No. 14  
Block (15) No. 15  
Block (16) No. 16  
Block (17) No. 17  
Block (18) No. 18  
Block (19) No. 19  
Block (20) No. 20

10.51 E  
10.51 W

Handwritten notes and signatures in the bottom right area of the map.

Handwritten notes and signatures in the bottom right area of the map.

Counter 31979



The State of Texas } variation  $10^{\circ} 21' E$   
Matley County }

Field notes of a survey of a Base line run in Block  
No. 2 of Porters and North Pease river in Matley Co.  
Texas Said line is the meander of the natural  
course of the South bank of North Pease river  
and is the North Boundary line of said Block  
No. 2 and is also the North Boundary line of Survey  
in said Block from <sup>(N.W. corner)</sup> Sur. No. 1 <sup>(N.E. corner)</sup> to Survey No. 13

Beginning at the North East corner of Survey No. 23 Block  
No. 4 Texas and Pacific Railway company this point  
is on the South Bank of North Pease river and  
is identified by its being very a large cottonwood  
near the mouth of Jam Ball creek br. S.  $68^{\circ} E$   
510 vrs. marked X Thence South  $83\frac{3}{4}^{\circ} E$  with meanders of  
River 965 vrs. to a point Thence S.  $85\frac{1}{2}^{\circ} E$  with meanders of  
<sup>river</sup> 954 vrs. to a stone mound on South Bank of river this  
point is the N.E. cor. of Sur. No. 1 Blk No. 2

Thence N.  $58^{\circ} E$  with meanders of river 1120 vrs. to a point  
on South Bank of river Thence N.  $38^{\circ} E$  1543 vrs. to a stone  
mound the N.E. cor. of Survey No. 2 on South bank of river  
Thence N.  $43\frac{1}{4}^{\circ} E$  at 227 vrs. pass a cotton wood tree marked X at  
1387 vrs. a point Thence N.  $80^{\circ} E$  with meanders of river 965  
vrs. a point for N.E. cor. of Sur. No. 8 on South Bank of river  
~~marked a stone mound br. S.~~

Thence N.  $68^{\circ} E$  1025 vrs. to a stone mound on South bank of  
River Thence N.  $55\frac{1}{2}^{\circ} E$  1153 vrs. to a stone mound on Bluff  
South Bank of river the N.E. cor. of Sur. No. 4

Thence N.  $25^{\circ} E$  2000 vrs. to a point on South bank of  
river Thence N.  $74^{\circ} E$  1097 vrs. to a stone mound & stone  
marked X br. S. 149 vrs. a magnet br. S.  $14\frac{1}{2}^{\circ} E$  66  $\frac{1}{2}$  vrs.  
a cedar bush and round knob br. N.  $4^{\circ} E$

Thence N.  $27\frac{1}{4}^{\circ} E$  2041 vrs. a point Thence N.  $33^{\circ} E$  1744  
vrs. to a point on South Bank of river for N.E. cor.  
of Sur. No. 6 Thence N.  $46\frac{1}{2}^{\circ} E$  1310 vrs. to a point on  
South Bank of river Thence N.  $25^{\circ} E$  2248 vrs. with  
meanders of river to a stone mound where a cottonwood



from S.  $13\frac{1}{2}^{\circ}$  E. 141 vrs. Thence <sup>15</sup> N.  $17\frac{1}{4}^{\circ}$  E. 1764 vrs. to a point  
 on South bank of river Thence <sup>16</sup> N.  $84^{\circ}$  E. 1053 vrs. to a  
 point on South bank of river Thence <sup>17</sup> S.  $58^{\circ}$  E. 389 vrs. to  
 a point on South bank of river whence a cotton wood tree  
 N.  $58^{\circ}$  W. 40 vrs. ~~Thence S. 5.~~ This point is at the N. E. cor.  
 of Sur. No. 8 Thence <sup>18</sup> S.  $52\frac{1}{2}^{\circ}$  E. with meanders of river  
 1197 vrs. to a point on South Bank of river Thence <sup>19</sup> S.  $66^{\circ}$  E.  
 1040 vrs. to a point on South bank for N. E. cor. of Ar.  
 No. 9 Thence <sup>20</sup> S. N.  $73\frac{3}{4}^{\circ}$  E. with meanders of river 990 vrs.  
 to a point on South bank Thence <sup>21</sup> N.  $49\frac{1}{2}^{\circ}$  E. with meanders  
 of river out 460 vrs. pass mouth of antelope Creek at  
 1000 vrs. a point whence a cotton wood tree N.  $59^{\circ}$  E. 26 vrs.  
 at 1249 vrs. a point for N. E. cor. of Ar. No. 10 on South  
 bank of river whence a <sup>(forked)</sup> cotton wood tree S.  $47^{\circ}$  E.  $67\frac{1}{2}$   
 vrs. Thence <sup>22</sup> N.  $40^{\circ}$  E. 1480 vrs. with meanders of river to a point on  
 South bank Thence <sup>23</sup> S.  $80^{\circ}$  E. 627 vrs. with meanders of  
 river to a point on South Bank Thence <sup>24</sup> S.  $40^{\circ}$  E.  
 with meanders of river 578 vrs. to a point on South bank  
 of river for N. E. cor. of Ar. No. 11 Thence <sup>25</sup> S.  $45^{\circ}$  E. with  
 meanders of river 1344 vrs. to a point on South Bank of  
 river Thence <sup>26</sup> N.  $77\frac{1}{2}^{\circ}$  E. 973 vrs. with meanders of river to  
 a stone mound on South bank high bluff this is  
the N. E. cor. of Sur. No. 12 Thence <sup>27</sup> S.  $70\frac{1}{2}^{\circ}$  E. 977 vrs.  
 with meanders of river to a point on South bank of  
 river a mesq. tree S.  $74\frac{1}{2}^{\circ}$  E Thence <sup>28</sup> N.  $77\frac{1}{2}^{\circ}$  E. with meanders  
 of river 975 vrs. to a stone mound for the N. E. cor. of Ar. No.  
 13 on South bank of river Thence S. at 968 vrs.  
 a stone mound on top of high bluff at 2126 vrs.  
 a stone mound on a narrow divide about 40 vrs. north  
 of the Childress road Thence N. at 285 vrs. a point whence  
 a galvanized gas pipe marked N. W. 50. K. Ar. No. 5490 vrs.  
 said pipe represents the N. W. corner of Ar. No. 50 S. P. Knott  
 containing wheat at 1371 vrs. a stone mound whence a stone  
 mound N. 91 vrs. containing wheat at 1900 vrs.  
 to a stone mound in canyon for S. W. cor. of Ar. No. 13  
 a rock pinell tree S.  $54^{\circ}$  E. Thence S. 666 vrs. to a  
 stone mound Thence N. 896 vrs. to a stone mound  
 Thence S. 210 vrs. to a set stone I identified as the N. W.  
 cor. of the G. W. Harris survey



Surveyed date to date inclusive July 30<sup>th</sup> to Aug. 10  
1900

J. C. Rily Henry Pippins & Co.

I, A. H. Seay County Surveyor of Matley County  
Texas do hereby certify that the foregoing  
Survey was made by me on the ground and  
that the limits boundaries and corners  
as described in the foregoing Field Notes  
and Shown in sketch hereto attached are  
correctly shown and set forth just as I found  
them on the ground and that they are recorded  
in my office in Book No 1 Page 353-354.  
#355-

A. H. Seay County Surveyor  
Matley County Texas

1900  
13  
5700  
1900  
24700



Sketch "C"

Motley Co.

Field Notes of the Meanders  
of the South Bank  
of North Pease River  
The North Base line of  
Block No 2  
Jr. Partient

by  
J. H. Slay Surgeon  
Matley County Texas

Filed in Genl. Land Office  
12/3/1900

L. G. Ulise  
Chf. Draftsman

1900  
13  
5700  
1900  
24700