

A Narrative Report of a Survey Line in connection with the Location of Surveys 24 and 25 A.J.Smith in Motley County

Found a granit rock marked X on North bank of creek, edge of rock bluff brs 5.6 vs. and West 8 1/2 vs. said rock was on line of a fence running West. This point is supposed to be the Southeast corner of Section 1 Block 2 J. Poitevent. We then found a gyp rock mound on a high sand hill in a fence line running North and South. Both granit rock and gyp rock mound fit the discription given by B.F.Moofe in his corrected field notes of Section 1 Block 2, J. Poitevent. Set instrument over granit rock, run line North over gyp rock on sand ridge, we will refere to this line as North and is supposed to be the East line of said Section 1.

Found 1 1/2 in. galv. pipe marked S.W. 82 H.H.C. North 14 deg. 48 min. East 105 vs. from said granit rock . We started chaining North from said granit rock at 421 vs. passed 24.2vs. West of a 1 1/2 in. galv. pipe marked W.N.W.82 H.H.C? at 859.4 vs. looked for Southwest corner Section 2, Block 2, J.Poitevent, but did not find any indications of a corner. We built an earth and rock mound on gyp bed at this point for the Southwest corner said Section 2. From this point we ran East turning a 90 deg angle, at 1900 vs. we built an earth and stone mound in canyon for the Southeast corner of said Section 2. From this stone mound and old stone mound brs. N. 18 vs. and East 2 vs. and a 1 1/2 in. galv. pipe marked N.N.W. 82 H.H.C. brs. N. 49.4 vs. and East 23 vs. from the Southeast corenar of said Section 2 which we established, we ran a line North to a 2 in. pipe in fence line said by Guy and Elred Seigler to have been set by B.F.Moore for the Southwest corner Section 3 Block 2 J. Poitevent. The angle formed by this line and the South line of said Section 2 is 89 deg. 51 min. making this course North 0 deg. 9 min. West We measured from the corenar in canyon we set for the Southeast corner of said Section 2 to the 2 in. pipe said to be the Southwest corner of Section 3 this same block. We found this distance to be 1950.4 vs. We then measured back 723.1 vs. to a point for the Southwest corner of Survey 47 and the Northwest corner Survey 24, set instrument at this poi point and tried to check on red pinnacle, and the middle one of the three hills, this point will not fil the bearings given in the original feild notes of Survey 24 A.J.Smith. (A point from which the bearings would check is 16 vs. East and 9.6 vs. North) We turned a 90 deg. angle at point we established 723.1 vs. South 0 deg. 9 min. East of 2 in. pipe which made the course North 89 deg. 51 min. East at 1909 vs. a point in fence line . Said point being 1167.4v. North 0 deg. 25 min. West of a 1 1/2 in. galv. pipe marked S.W.83 H.H.C and 342.6 vs. South 0 deg. 25 min. East of another 1 1/2 in. galv. pipe marked N.W. 83 H.H.C. Measured the angle at this point and found it to be 89 deg. 44 min. We then set instrument over 1 1/2 in. galv. pipe marked N.W. 83 H.H.C. which is at a fence corner. We found an old stone mound N. 25 deg. 45 min. West 19.7 vs. Turned and angle 89 deg. 57 min which will make the course N. 89 deg. 38 min. East at 3271 vs. a 1 1/2 in. galv. pipe marked N.E. 83 H.H.C set at fence corner. Turned an angle of 90 deg. 28 min. which makes a course of N. 0 deg. 10 min. West with fence line at 946 vs. pass a pipe a 1 1/2 in. galv. pipe marked N.W. 72 set at fence corner at 1026 vs. pass 118 vs. East of a red san stone. At 2578 vs. a red sand stone set at fence corner, this stone is said to be a corner of the F.F.Bain survey no. 4. Turned an angle of 90 deg. 34 min. which makes a course N. 89 deg. 36 min. West, at 575 vs. pass a red sand stone at 1353 vs. a red sand stone. At 1397 vs. looked for Southwest corner of Survey No. 49 and then Northwest corner of Survey 25 but failed to find any indications. From the sand stone at 1353 vs. we ran South 2588.3 vs. to fence line which is the North line of section 83 H.H.C. as it is marked by the 1 1/2 in. galv. pipe corners.

Surveyed- February 8th and 9th, and April 16th and 17th, 1940

W.D.Newell- Instrument Man

Guy Seigler
Donald Groves } Chain carriers
E.D.Scott }
J.W.Fowler }

Floydada, Texas May 6th, 1940

W.D. Newell
Licensed Land Surveyor
of Texas

LIST OF $1\frac{1}{2}$ in. GALV. PIPE

F - $1\frac{1}{2}$ "galv. pipe marked S.W. 82 H.H.C. set in fence line. A granit rock marked X brs. S.W. 105 vs.

G - $1\frac{1}{2}$ "galv. pipe marked W.N.W. 82 H.H.C.

H - $1\frac{1}{2}$ in. galv. pipe marked E.N.E. corner 82 H.H.C.

I - $1\frac{1}{2}$ in. galv. pipe marked N.N.W. 82 H.H.C an old stone in canyon brs. S.W. 36 vs.

J - $1\frac{1}{2}$ in. galv. pipe marked S.W. 83 H.H.C. set at fence corner.

K - $1\frac{1}{2}$ in. galv. pipe marked N.W. 83 H.H.C set at fence corner.

L - $1\frac{1}{2}$ in. galv. pipe marked N.E. 83 H.H.C set at fence corner.

M - $1\frac{1}{2}$ in. galv. pipe marked N.W. 72 set at fence corner.

This list of pipe have the appearance of being set by R.M.Kenny, as they are the same size and kind and have the same type of marking as those set by him in Block J.B. which joins these surveys.

Mr. B.F.Moore refers to the pipe at K. as being set by Kenny in his field notes on survey 47 G.W.Seigler.

RECEIVED

MAY 14 1940

REFERRED TO MAP

STATE OF TEXAS
COUNTY OF MOTLEY

PLAT OF CONNECTING LINES
FROM SE. COR. SEC. NO. 1
J. POITEVENT BLK. 2. TO
SW. COR. SUR. 49 A. J. SMITH
ALL COURSES ARE SHOWN
WITH REFERENCE TO A LINE
PASSING THROUGH THE STONE
MOUND ON HIGH SANDHILL IN THE
EAST LINE OF SEC. 1 J. POITEVENT
BLK. 2 AND THE GRANIT ROCK MKDX
AT ITS S.E. COR. TAKEN AS NORTH
COURSE.

SCALE 1 IN. = 500 V.

x x x INDICATES FENCE
o " PIPE
Δ " STONE OR
STONE MOUND

F-G-H-I-J-K-L & M 1 1/2 in. GALV. PIPE
REFERRED TO IN B. F. MOORE'S Field
NOTES AS BEING SET BY R. M. KENNEY
AND ARE BEING USED BY THE LAND
HOLDERS AS CORRECT LOCATION OF
LINES.

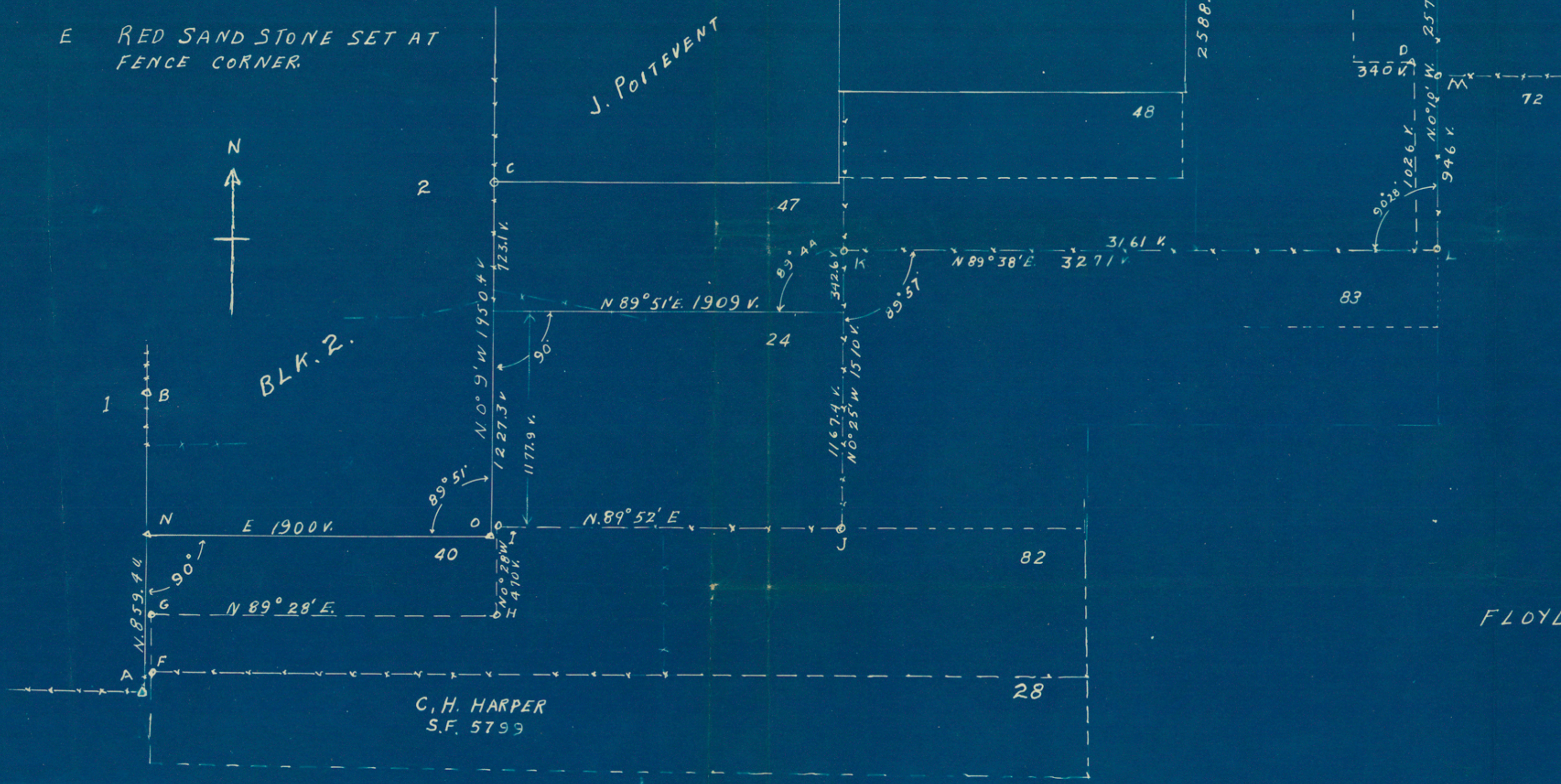
N. STONE MOUND SET BY ME FOR THE
S. W. COR. 2 J. POITEVENT
O STONE MOUND SET BY ME FOR THE
S. E. COR. 2 J. POITEVENT 1 1/2 in. GALV.
PIPE MARKED N. N. W. H. H. C. BRS. N. 49.4 V.
AND E. 23 V.

FLOYDADA TEXAS MAY 1 1940

C. H. Harper
LICENSED LAND SURVEYOR
of TEXAS



- A GRANIT ROCK MARKED X ON NORTH BANK OF CREEK.
ROCK EDGE OF BLUFF BRS. S. 6 V. & W 8 1/2 V.
PIPE MARKED SW H.H.C. BRS. N. 14° 48' E 105 V.
- B GYP ROCK MOUND ON HIGH SAND HILL, IN FENCE LINE
- C 2 IN. PIPE SET IN FENCE LINE SAID TO BE SET BY
B. F. MOORE FOR S. W. COR. 3 J. POITEVENT
- D RED SAND STONE 1026 V. NORTH 11.8 V. WEST OF
1 1/2 IN. GALV. PIPE MARKED N.E. 83 H.H.C AND 80 V. NORTH
AND 118 V. W. OF ANOTHER 1 1/2 IN. GALV. PIPE MARKED N.W 72
- E RED SAND STONE SET AT
FENCE CORNER.



C. H. HARPER
S.F. 5799