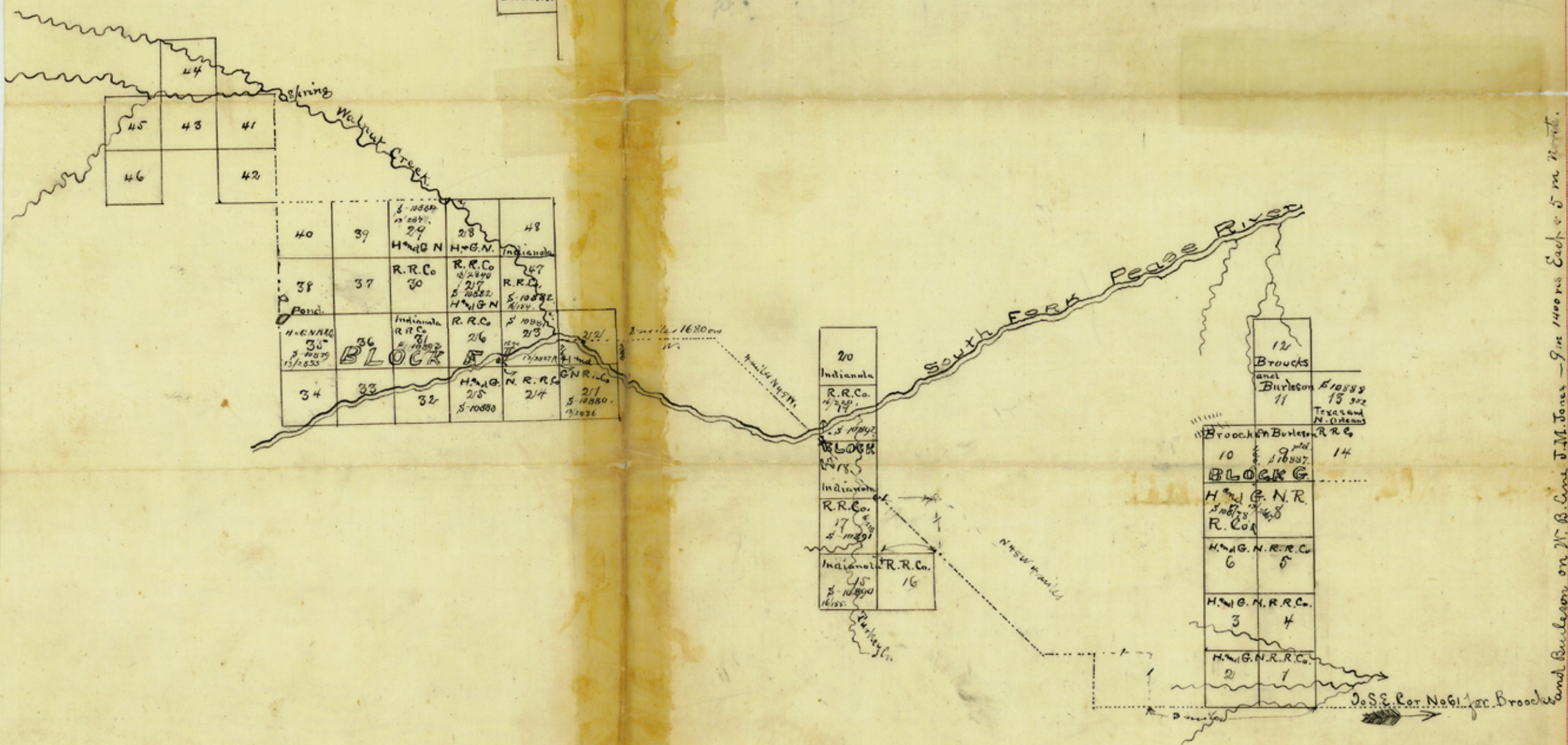


Motley Co.
Sk. File 6

249
Bealy
250
Seale
251
and
252
Forwood.

John Gibson.

See sketch in Fanning S-10892
for sketch of corrected field notes
of block H, and certificate of correction
in S-10880. 6/13/04. E. von Rosenberg
of the same



and Burleson on N. B. Line J.M. Jones - 9 in 140000 East 5 m 20 ft.

R

counter 32145

File 6
 Motley Co. 15
 Young Distr.

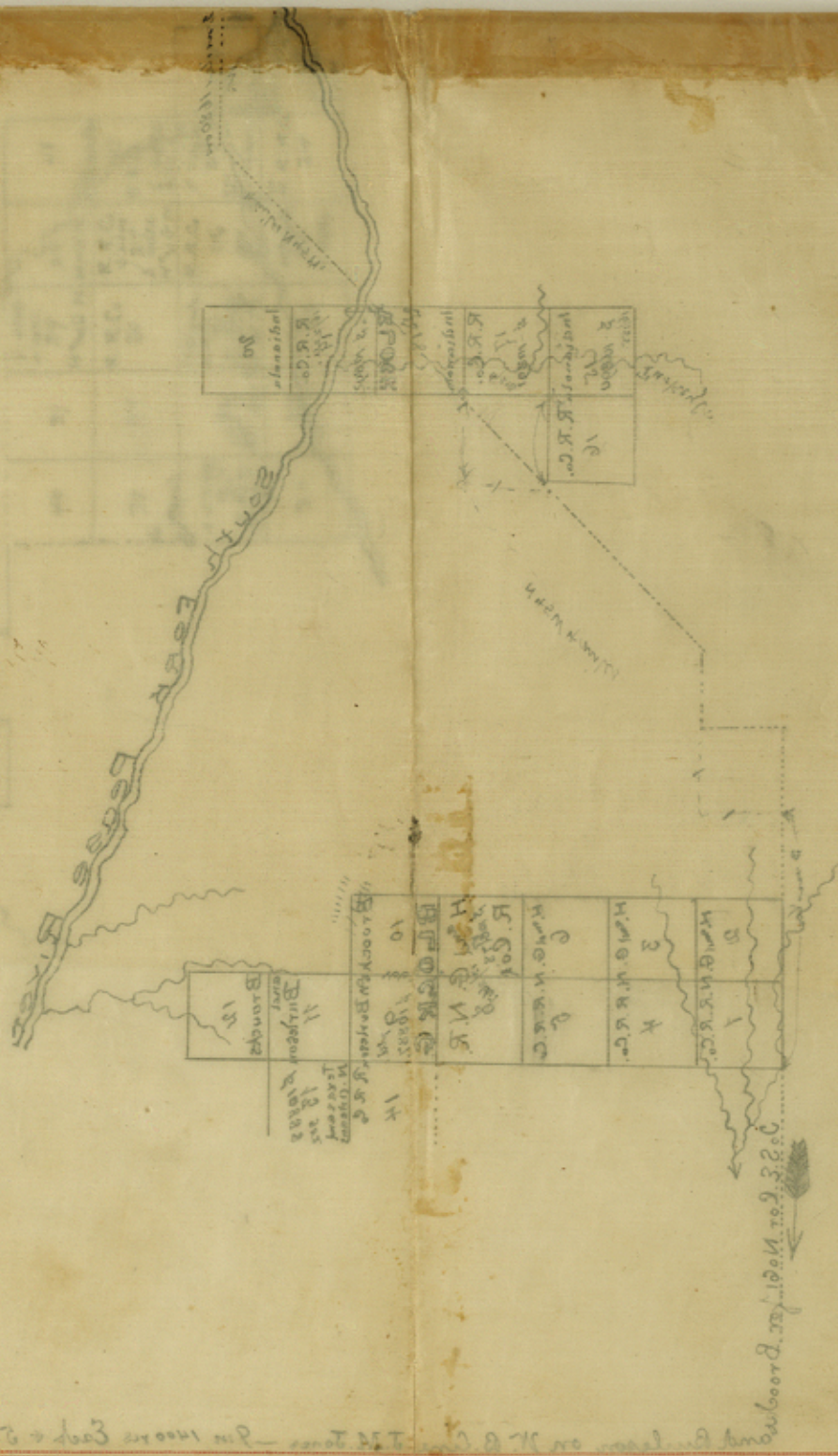
Filed Dec 21. 76.

Along South Fork
 Pease River

See sketch in Johnson's 2-10885
 in 2-10880. 2/13/04
 for book H and contents
 for sketch of contents
 of book H and contents
 of sketch of contents

R

Counter 32 146



R

Counter 32 142