



General Land Office.

State of Texas.

Austin.

November 19, 1904.

JOHN J. TERRELL, COMMISSIONER.  
J. T. ROBISON, CHIEF CLERK.

Capt. R. M. Kenney,  
State Surveyor,  
Matador, Texas.

Dear Sir:

Your favor of the 18th ultimo, together with sketch, was duly received. I have investigated the field notes of surveys 1 and 2 A. B. & M., certificate #33, 5, 6, 7, 8, 9, and 10 T.W.N.G.R.R.Co., and 1 and 2 R. T. Co., certificate #47 and I. & G. N. Ry. Co., certificate #529, in the S. E. corner of Motley county on Salt and Tarrant creeks.

Geo. Spiller by Jasper Hays located surveys 1 and 2 A. B. & M., certificate 1268, 5, 6, 7, and 8, T.W.N.G.Ry.Co. He begins on #1 A. B. & M., certificate #1268, by calling for the N. W. corner of survey 189 B.S. & F., certificate 1113 by Armstrong, and constructs the others by course and distance as shown on the official map of Motley county now in use. The field notes of No. 9 T.W.N.G.R.R.Co. appear to have been corrected or altered on the face; that is, several words have been entirely blotted out and written over, &c., but the calls for Salt and Tarrant creeks have not been changed. I enclose you a pencil copy of the field notes of sections No. 9 and 10. I should think that if you have identified the true Tarrant and Salt creeks, &c., and can determine therefrom the position of said sections 9 and 10 as they call for said creeks, you have solved the problem. This would govern all the surveys made by Hays to the East of same; that is, by reversing and constructing them East from section No. 9, survey No. 1, A. B. & M., certificate No. 1268, and No. 5 T.W.N.G.R.R. Co., certificate

*J. S. Hamilton 11/14/04  
& answered 11/19/04.  
"E"*



General Land Office.

State of Texas.

Austin.

JOHN J. TERRELL, COMMISSIONER.  
J. T. ROBISON, CHIEF CLERK.

R. M. K. No. 2.

O/20, they would be respectively in conflict with surveys 189 and 190 by Armstrong.

No. 9 would also govern the position of 1 and 2 R. T. Co., certificate 47, and I. & G. N. Ry. Co., certificate 529 on the South. Surveys Nos. 116, 117, 119 and 120, block M, Matador Cattle Co., should never have been corrected, as they were originally correct.

Have you finished up your work in N. E. and N. W. corners of Dickens county? If so, I suppose you intend to return your report of same together with the work in Motley county.

Very respectfully,

E. von Rosenberg-Ewing

Commissioner.

*Handwritten notes and signatures, including a large 'X' and '10/17'.*

counter 32169

"E"

Motley Co. St. File #E

"Sketch #1"

Motley Co

Sketch files

See county book SF. 6716

Report of R. M. Kenney State Surveyor of S. E. corner of Motley Co.

Oct 18/04.

Filed Oct 21/04

J. T. Robison

Chief Clerk

Acting Comr.

per. E. von Rosenberg

Examining Officer

See certified connecting link by Jas. H. Parks & filed in this office 2/7/84 in Motley County

Sketch files - E. von R

See sketch in SF. 6748

county 38170

"E"

Recd. 6<sup>th</sup> 21/04. 141

Matador Tex. Oct. 18, 1904

Hon. J. J. Terrell Comm. Gen. L. C.  
Austin Tex.

Dear Sir,

I hand you herewith sketch a part of  
the lands in S. E. corner of Motley County -  
I wish to call your attention especially to location  
of Surveys 1+2, A. B. & M. - 5. 6. 7. 8. 9 + 10 T. W. X. C.  
R. R. Co. and 1+2 R. T. Co. and 1. I. + G. X.  
R. R. Co. It appears from the field notes of  
these Surveys that they take their location from  
Surveys 13 + 14 A. B. + M. In 1875, Armstrong  
located 13. + 14 A. B. + M. and 189 + 190 B. S. + F.  
In 1876 - Geo Spicer, by Jasper Hays located  
the above named 1. 2. A. B. + M. 5. 6. 7. 8. 9. 10  
T. W. X. C. R. R. Co. He begins on #1. A. B. M.  
by calling for the X. W. 189, B. S. + F. and  
constructs the others by course and distance  
as shown by the map on file in your office.  
The field notes of #9. T. W. X. C. call to begin at  
a md. 500 m. S. of S. W. corner # 7. T. W. X. C.  
"E"

200 ws. West of Tarrant's creek. Thence North 1900 ws. to a narrow bank of Saet creek. 200 ws. West of the mouth of Tarrant's creek. --- The field <sup>note</sup> of #10 call to begin at N. E. 9. Thence North 280 ws. cross Saet cr. and then as map shows. --- Now, what I wish especially is to call your attention to, is the N. E. 9. T. W. N. C. --- By course and distance it would be S. 5300 ws. + West 5268 ws. <sup>13. A. B. + W. from S. E.</sup> By locating it by its call for Saet creek and the mouth Tarrant creek - it places it 4347 ws. South and 3225 ws. West of S. E. of #13. A. B. + W. --- In other words to locate by course and distance places it 1053 ws. S. and 2043 ws. West, of the mouth of the creek. I take the position that the creek call will hold. There is no question about the identity of the creeks. It is another case where Jasper Hays called for older surveys put in by Armstrong and did not know their true position on the ground.

"F"

On the sketch inclosed, the black indicates the location by course and distance - and the red - shows the position of 9 + 10 T. W. N. C. and 1 + 2 A. B. + M. and 1 + 2 Rusk Transportation Co. as located from the mouth of Tarrant's creek. The blue shows a part of Matador Cattle Co. Block M. as found on the ground - From field notes of 119 B. K. M. - which call at its E. S. E. corner for N. line #1. A. B. + M. also at its E. W. corner for N. W. 2 - A. B. + M. - the locator of B. K. M. localities No. 9 - T. W. N. C. from the mouth of Tarrant's creek - and his location corresponds with mine as I find his old corners on the ground - Please excuse pencil -

Very Respectfully  
R. W. Kennedy  
State Surveyor -

Rec'd. Oct 21 / 04

Sketch "E"

Motley County

Sketch files

See Sketch which  
is a part of this report.

D. von Rosenberg  
Examining Engineer

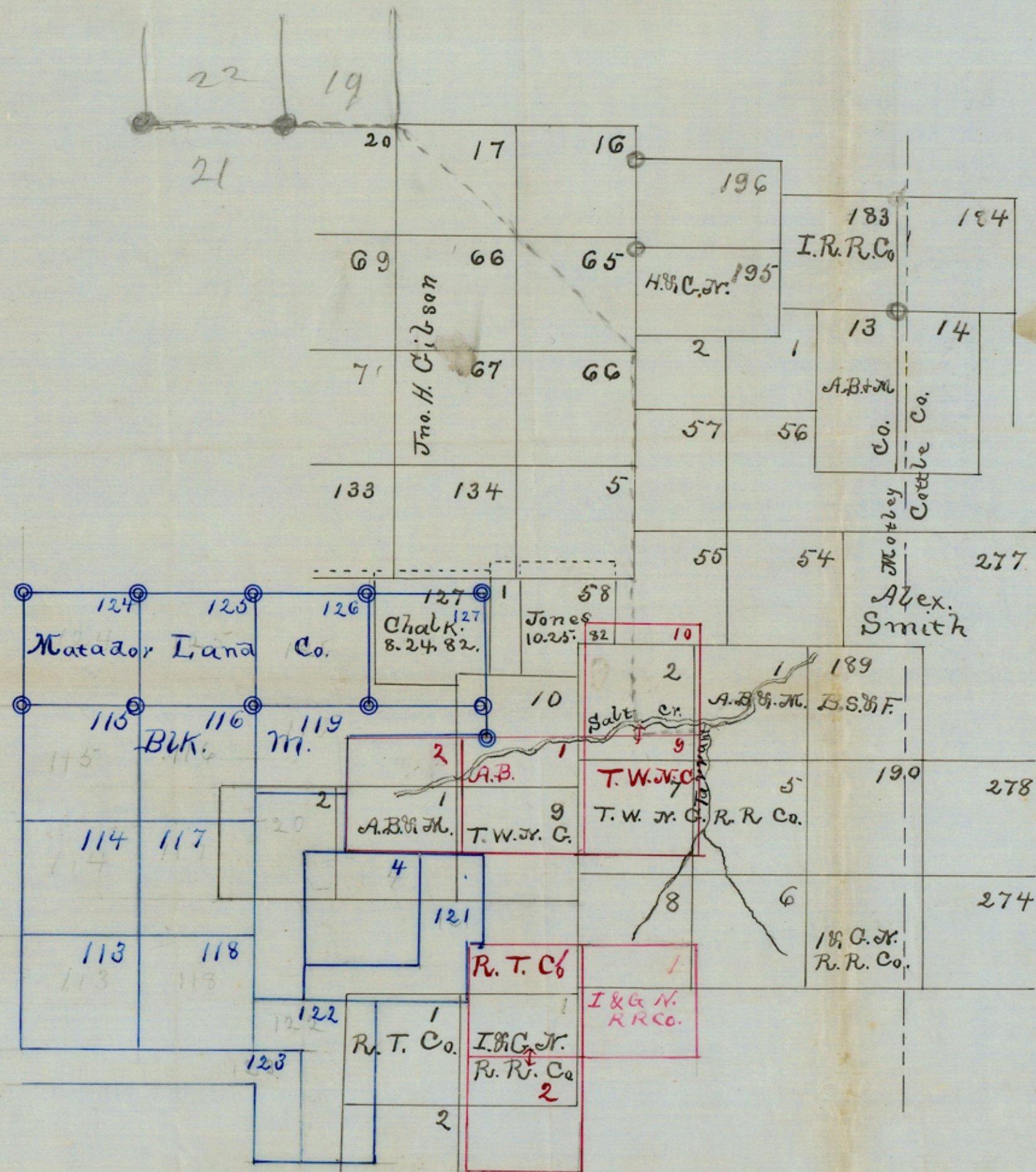
Filed Oct. 21<sup>st</sup> 1904

J. T. Robinson  
Comm.

counter 32174

171

"E"



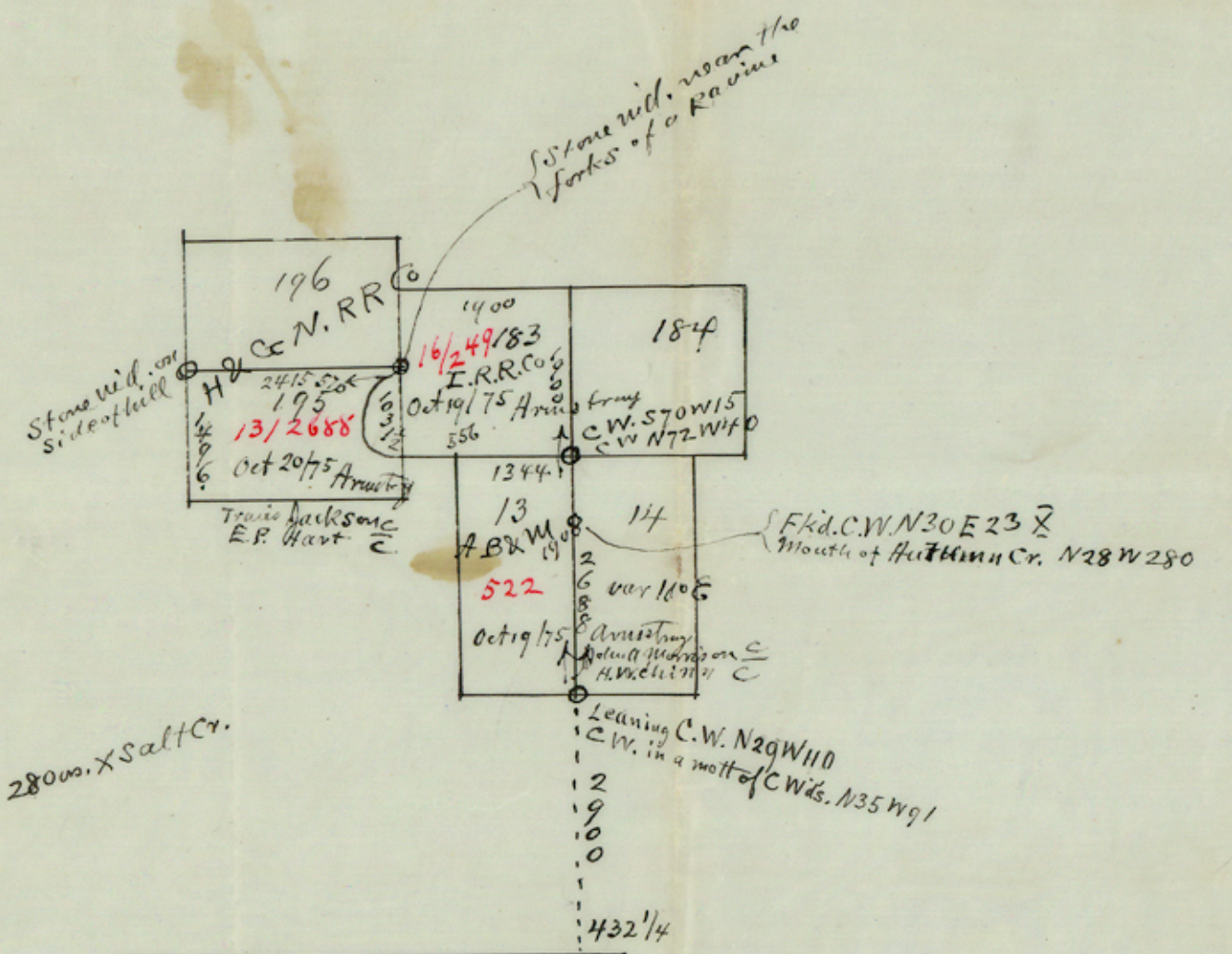
Filed Oct. 21<sup>st</sup> 1904

J. L. Robinson  
Chief Clerk  
Acting Comr.

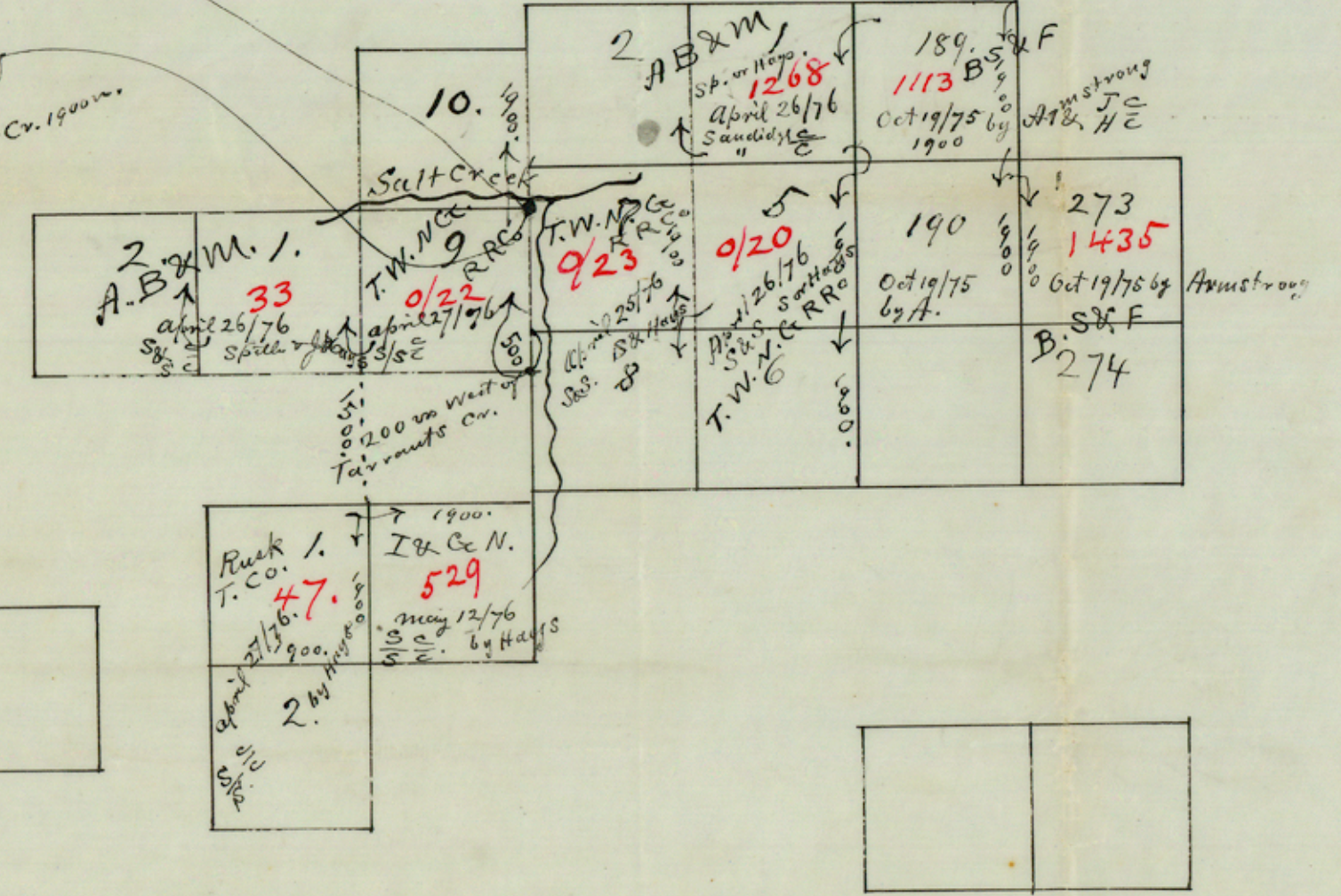
Sketch of part Motley County

R.M. Kenney State Sur.

Sketch "E" Motley Co. sketches files,



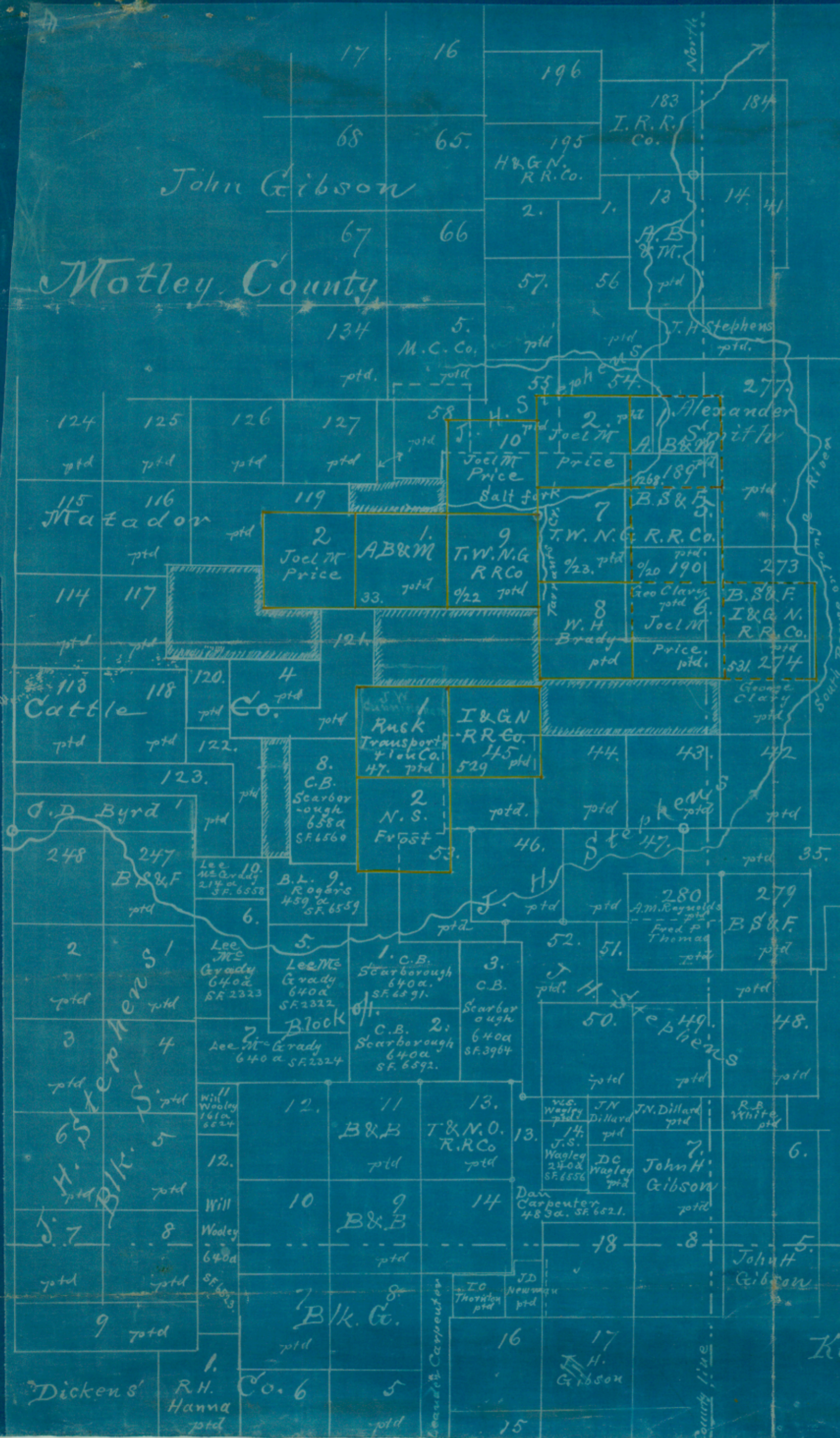
9 mi. on the bank  
of Salt Cr. 200 no.  
West of mouth of  
Tarrants Cr. on  
N. E. corner of this & C.  
Thence West up Salt Cr. 1900.



(See Skets in SF-6748)  $\frac{S}{S}$  indicate Sandage T.R. (Chain  $\frac{C}{C}$ )  
Sandage, T. (Carion  $\frac{C}{C}$ )

See Sketch on  
field note of  
trans-10855-11/19/04.  
By Edward Penney  
Examining Sft man

John Gibson  
 Motley County



Cottle County

This sketch is constructed from certified sketches and connecting lines filed by R. M. Kenney, State Surveyor and J. S. Clabank Co. Sub. Motley County, on file in Motley Co. sketch files & MK'd. E & F.

Surveys in yellow were surveyed by George Spiller per Jasper Hays, located from the N.E. corner of survey no. 9, T. W. N. G. R. R. Co. cert. no. 8/22 in the forks of Salt and Tarrant's Crs.

The dotted or broken survey lines on this sketch indicates the same to be inferior to the solid lines.

Jan. 30/05.  
 C. von Rosenberg  
 Examining & Compiling  
 Surveyor  
 L. L. O.  
 of Texas.

King Co.