

See Sketch & fieldnote of  
connecting line by Capt. Kenney in  
SF. 4439. & SF. 655

Field notes of a connecting line from  
the original S.W. corner of a 320 acre tract, being  
Survey No. 5. - S. 11269 cert. 23/204, in Motley Co.  
and its name Washington Co. R.R. Co.  
Begin at a stone m.d. the original S.W. corner of  
of said No. 5. Thence N. 45/8 vs. Thence  
West 5253 vs to a large Rk. m.d. the original  
N.E. corner of No. 1. B.E.K. 1. A. B. & W. in  
Floyd County. Surveyed March 28, 1902.  
Va. 10.30 E. Richard Kenney } chain  
Dan Scott } men  
R.W. Kenney State Sur.

Field notes of a connecting line  
Begin at a Rk. m.d. the original S.W. vs 3. 180 vs  
Sur. No. 5. - S. 11269 - cert 23/204. in Motley Co.  
and near its west line. Thence West 2778 vs.  
Thence S. 1578 vs. a point from which a  
Rk. m.d. the N.W. corner Sur. 64. B.E.K. W.  
Matador Cattle Co. brs N. 44 W. 11 vs.  
Thence S. at 2005 vs. pass 23 vs. West of a  
Rk. m.d. the N.E. corner of a 160 acre  
homestead in name J.H. Hodges, at  
2861 vs. cross the north line of sec. 12.  
H. & G. N. R.R. Co. - 1040 vs. E. of a stone  
the original N.W. corner of said No. 12.  
at 3483 1/2 vs. a point. Thence West 25 1/2 vs.  
a rock m.d. the original S.W. corner of Sur.  
No. 64. B.E.K. W. Matador Cattle Co.

1954  
2778  
4732  
1300  
6770  
3570  
1420  
239  
1493  
1954

d'

Return to the point in north line Sec. 12  
 1040 vs. E. of its N.W. corner. Thence E. 871 vs.  
 South 4 vs. to a RK. wd. the N.E. corner of Sec.  
 12 - Thence South at 1057 vs. pass 5 vs. West  
 of a pile of stone, the N.W. corner of a 160  
 acre survey in name of F. C. W. Gaughey  
 and the S.W. corner of a 77½ acre survey  
 in name H. H. Campbell, at 1896 vs. a point  
 Thence West 15 vs. a stone m.w., the S.E. cor.  
 of the said Sur. No. 12. A.B. & W. cert. 317.  
 which is also the N.W. corner of a 160 acre  
 tract in name of H. H. Campbell. Thence  
 begin at S.E. corner No. 12 - East 1072 vs.  
 South 3 vs. to a stone set - marked N.E. - H.H.C.  
 Thence South at 844 vs. pass S.E.

of said H. H. Campbell sur. at 1004 vs.  
 a point - E. 296½ vs. North 16 vs. a stone m.w.  
 said to be S.E. corner of 63. BELK. W. Thence  
 South 1145 vs. - E. 28 vs. stone m.w. - said  
 to be N.W. corner of 41. BELK. W. (I doubt  
 the location of this corner)

Thence East 2124 vs. South 1106 vs. to a RK.  
 wd. the original N.W. corner survey No. 49  
 BELK. W. Matador Cattle Co. Thence 133 vs.  
 East 1923 vs. to a RK. wd. the original  
 N.W. corner No. 48. BELK. W. Thence E.  
 1896 vs. a RK. wd. the original N.W. cor.

Survey 47. BELK. W. Thence North 21 vs.  
 East 1912 vs. a RK. ma. the original N.E.  
 corner of 47. BELK. W. Thence N. 501 vs.  
 E. 389 vs. a large stone set in the ground  
 the S.E. corner survey No. 3. cert. 1/355  
 B. S. & F. Thence N. 37 vs. E. 66 1/2 vs. a  
 stone set in the ground, the original  
 S.W. corner 44. cert. 13/2635 - H. & G. N. R.R. Co  
 from which a P. O. bro. West 443 vs  
 Thence North 1900 vs. the N.W. corner of  
 the said 44, Thence E. 478 vs. N. 473 vs.  
 to the original S.E. corner of Sur. 68  
 BELK. W. - (P. O. bearings found as called,  
 for in files or notes) Thence E. 1064 vs. S. 180 vs.  
 East 1228 vs. N. 6 3/4 E. 141 vs. to an old settle  
 ma. on E. slope of hill. Thence E. 1904 vs.  
 North 5 vs. to a RK. ma. at head of draw  
 the original N.W. corner of sur. 71. BELK. W.  
 Thence South at 1600 vs. bed of Duckman  
 cr. at 1733 vs. a point, E. 12 vs. a RK. ma -  
 the original S.W. corner of 71. BELK. W.  
 from which a large lining Ct. wa. on  
 west bank. Duckman - wa. - ~~7~~ br  
 S. 88 E. 25 vs. Thence S. 4100 vs. East  
 4517 vs. to original N.E. corner Sur. 29  
 cert. 13/2847 - H. G. & N. R.R. Co.

wa. 10.30E

Surveyed March, 1902. - Richard Kenney } chain  
 R.W. Kenney State Sur. } Dan Scott } new  
 d<sup>2</sup> }

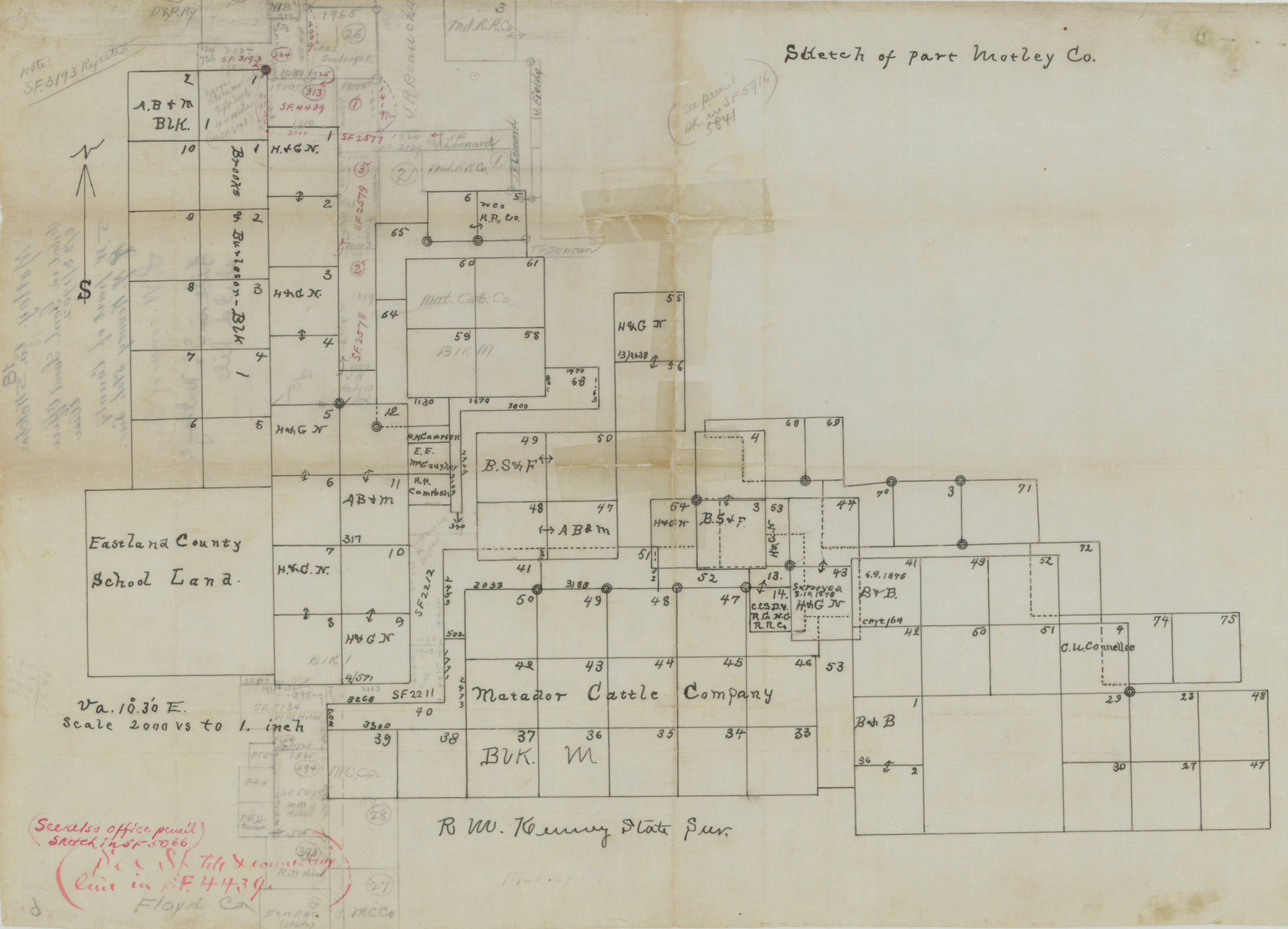
I C. H. Robbins County Surveyor  
Matley County Texas, do hereby  
certify that the foregoing Field Notes  
are recorded in my office in Matley  
Co. in Book 2. Pages 625<sup>nd</sup> and 626.

This 19th day of June 1902

C. H. Robbins  
County Surveyor Matley Co. Texas  
by J. E. Curbank. Deputy

Matley Co. 5 Notches  
Correcting Time  
R. M. Kenney  
State Sur.  
Filed 6/23/02  
Miss

Sketch of part Motley Co.



Note SF 3193 Rejected

See pencil sketch in SF 5916 5841

Vertical handwritten notes on the left side of the sketch, including '2 1/2' part of land' and 'H. H. French'.

Va. 10.30 E.  
Scale 2000 vs to 1. inch

See also office pencil sketch in SF 5066  
Pencil sketch & connection line in SF 4439  
Floyd Co

R.W. Kenney State Sur.