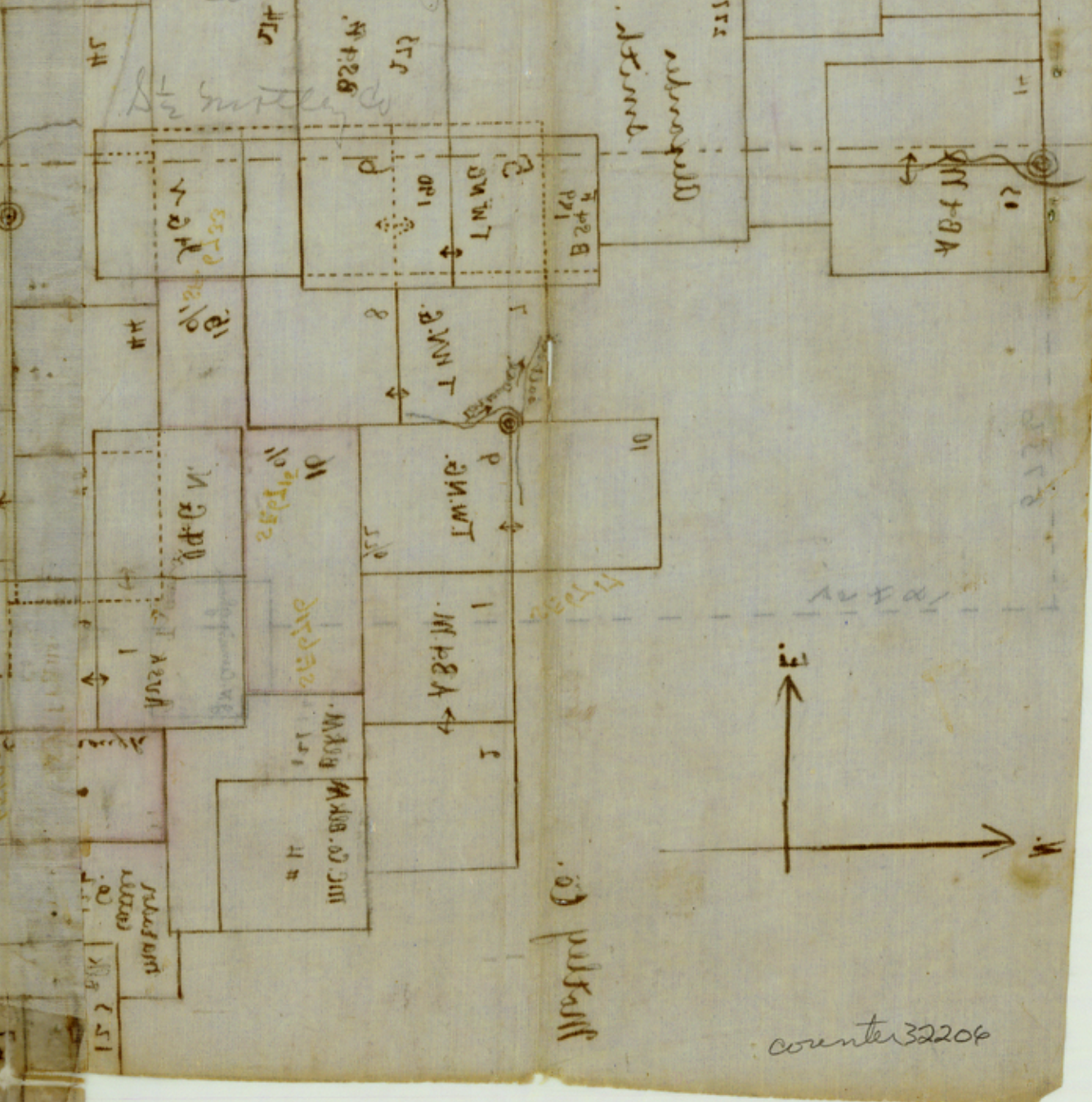
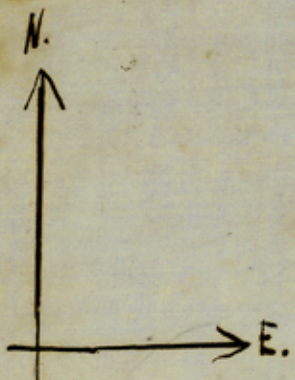




26- 26.  
 Sketch File  
 J.E. Ubanks SK. of Surveys  
 along South Pease, or Tongue  
 river. Attached to  
 connecting line



counter 32204



5736

Motley Co.



Alexander Smith.

A.B. & M.

T.W.N.G.

BS & F.

T.W.N.G.

BS & F.

Mc. Co. Blk M.

Blk M.

SF 6716

SF 6715

J.F. & N.

J.G. & N.

Madison Cattle Co.

Blk M.

Trans. Co.

SF 5150

BS & F.

6558/10

6559

6591

6592

280

279

34

Phens.

2324

6592

3964

50

49

48

51

Cattle Co.

J.H.S. & Phens.

906

1870

1919

1919

1919

1919

1919

1908

Dickens Co.

R. Hanna #1.

Blk G.

H.G.N.

Gibson J.H.

1919

1919

1919

1919

1919

1908

Counter 32207

Kin.