

6/24/13

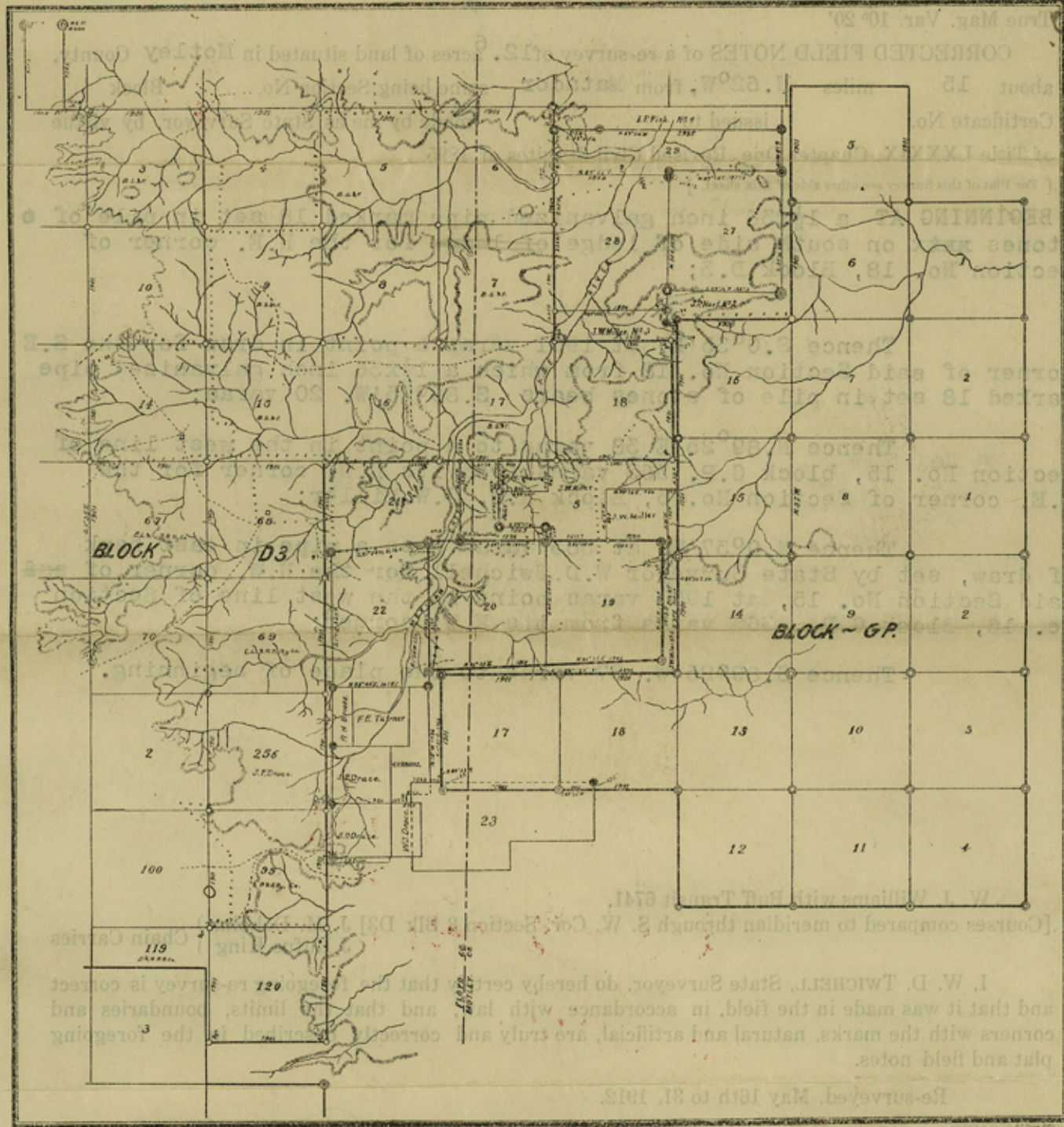
Survey No. 119  
Block No. Vacancy  
Grantee:

THE STATE OF TEXAS  
HOTLEY COUNTY  
CORRECTOR

Twichell's F.N. of a vacancy  
of 12.6  
OK. June 26, 1913

32.

8/2/1913



I, W. D. TWICHELL, State Surveyor, do hereby certify that the foregoing plat and field notes and that it was made in the field, in accordance with laws and limits, boundaries and courses compared to meridian through S. W. Cor. Section 36, Block D3, and the following plat and field notes.

Re-surveyed, May 18th to 31, 1912.

State Surveyor  
W. D. Twichell

Commissioner General Land Office  
[Signature]

counter 32215



Please return & oblige

Rosenberg

THE STATE OF TEXAS

MOTLEY COUNTY  
CROSBY COUNTY

Survey No. ~~XX~~

Block No. Vanancy

Grantee:

True Mag. Var. 10° 20'

CORRECTED FIELD NOTES of a re-survey of 12.6 acres of land situated in Motley County, about 15 miles N. 62° W, from Matador same being Section No. Block Certificate No. , issued to made by me as State Surveyor, by virtue of Title LXXXIX, Chapter One, Revised Civil Statutes of 1895.

[ For Plat of this Survey see other side of this sheet. ]

BEGINNING AT a 1 1/2 x 36 inch galvanized pipe marked 18 set in pile of stones ~~xxx~~ on south side of ledge ~~of ledge~~ for the N.E. corner of Section No. 18, Block D.3;

Thence S. 0° 35' E. at 1901 varas a point in draw for the S.E corner of said Section No. 18 from which a 1 1/2 x 36 inch galvanized pipe marked 18 set in pile of stones bears S. 89° 25' W. 20 varas;

Thence N. 89° 25' E 38 varas to a point in the west line of Section No. 15, block G.P. 363 varas from its N.W. corner for the N.E. corner of Section No. 5, Block H.F. J.W. Miller;

Thence N. 0° 37' W. at 363 varas pass a pipe in east bank of draw, set by State Surveyor W.D. Twichell for the N.W. corner of said Section No. 15, at 1901 varas point in the west line of Section No. 16, Block G.P., 363 varas from its N.W. corner;

Thence S. 89° 25' W. 37 varas to the place of beginning.

W. J. Williams with Buff Transit 6741.

[Courses compared to meridian through S. W. Cor. Section 3 Blk D3] J. M. Dobbins } Chain Carries  
J. Rufus King }

I, W. D. TWICHELL, State Surveyor, do hereby certify that the foregoing re-survey is correct and that it was made in the field, in accordance with law, and that the limits, boundaries and corners with the marks, natural and artificial, are truly and correctly described in the foregoing plat and field notes.

Re-surveyed, May 16th to 31, 1912.

APPROVED: July 29, 1913.

W. D. Twichell

State Surveyor.

Correct, June 26, 1913.  
B. van Rosenberg  
Chief Draftsman

G. Robinson  
Commissioner General Land Office.