

File 6.

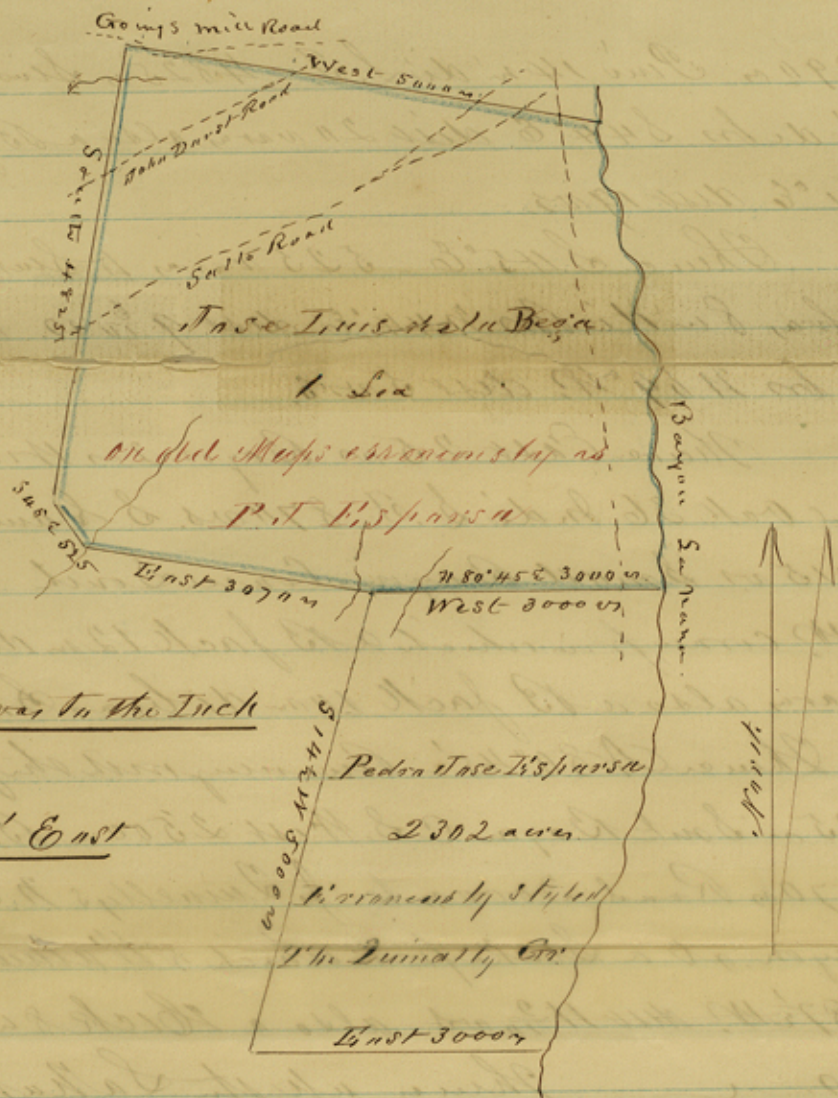
Nacogdoches County.

Filed by Jas H. Starr & son
May 29th 1868.

C. W. Proffler.

Beza and Espanza
Title South of
Nacogdoches.

counter 32245



Field notes of a survey of One League of Land for H. H. Edwards of the Grant to Josi Luis de la Bega commencing on Salvanal Dajon about 1/2 mile below Kacay docks at a stake from which a Sugar Maple 14 in diameter bears S 6° W. dist 9 vars also a Hickory 10 in di Brs N 38° W. dist 19 vs. Thence West 365 vs. S. Gum 16 in di S. J. 45 in Road 810 vs. Road to the Salto 860 vs Hickory 14 in S. J. 1310 vs upper Road to the Salto 1423 vs Pine 15 in di S. J. 2520 vs. Spruce Branch 3084 vs Pine 30 in di S. J. 3260 vs Road to John Durst's 4395 vs Road to Gowen's Mill 4900 vs Road to Gowen's Mill 5000 vs to Spruce Branch S 45° E dist 9 vs also a Hick 10 in di Brs S 54° W dist 5 vs.

Thence South 310 vs Spruce Branch C West 1330 vs Road to John Durst 1542 vs Hick 15 in di S. J. 2950 vs Road to the Salto 3518 vs. Pine 24 in di S. J.

A

4390 m Pine 14 m di S. J. 4825 m Stake from which a B. Jack
8 m di br S 44° E. dist 20 vars, also a B. Jack 10 m di Br
S 61° E dist 19 vs.

Then a S 45° E - 525 vars to Stake from which a S. Oak
S. Oak 8 m di Br N 44° E dist 9 m vs. also a P. oak 8 m
di br N 69° W. dist 5 vs.

Then a East 25 m Bayou 2 m Wide C. S. West. 15 m
Pine oak 36 m di S. J. 87 m vs. S. Oak 18 m di S. J.
2915 m Small Bayou. Corner South 3070 m to J. Lunelly's
N. W. corner from which a B. Jack 12 m di br S. 56° W dist
6 vars, also a B. Jack 14 m di br S 18° E. dist 10 vs.

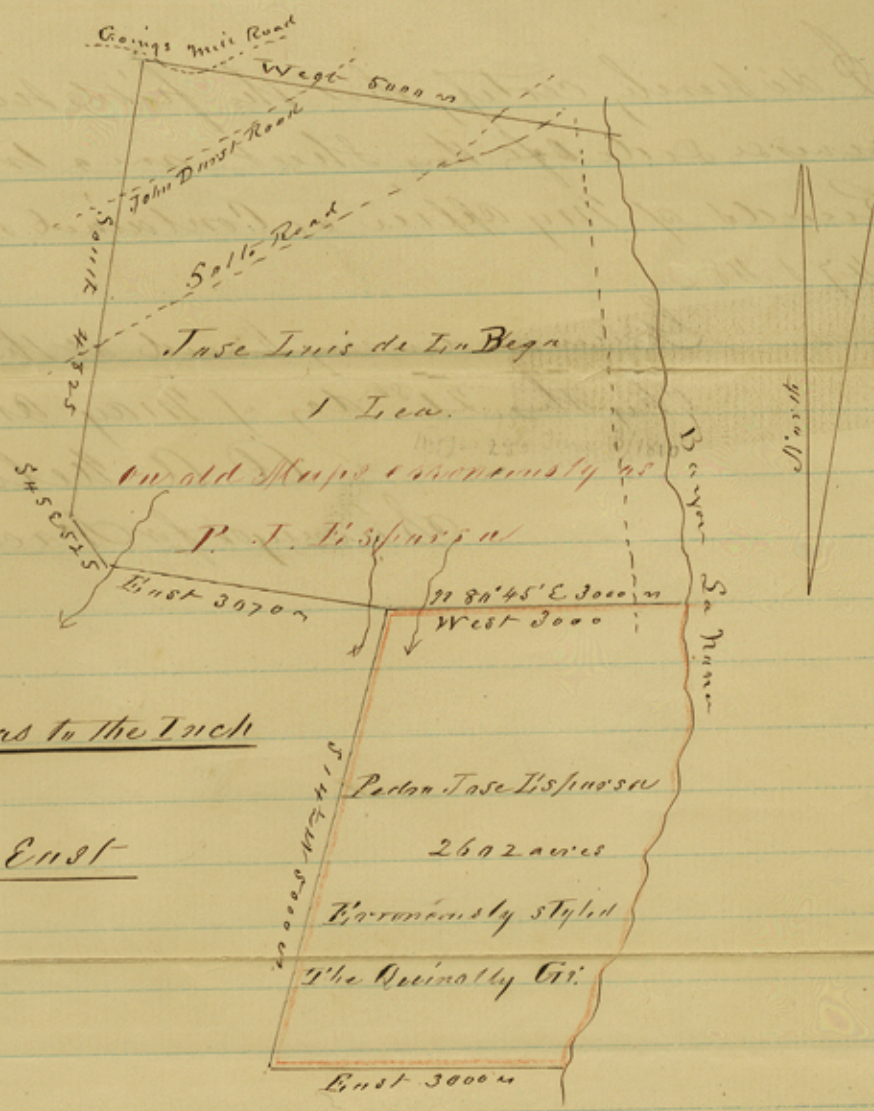
Then a N 80° 45' running with the J. Lunelly line
435 m Small Bayou C. S. West 2500 m B. oak 15 m di S. J.
2570 m Road 3000 m to J. Lunelly's N. E. corner on La Naha
Bayou, at a Stake from which a Walnut 16 m di Br
N 87° W. dist 11 2/3 vs. also a Hick 8 m di Br West
4 vs. Then up the La Naha Bayou to the
place of Beginning

The corners in the foregoing field notes are all mag-
netic. The Pedro Jose Esparsa Grant was commonly known
as the Lunelly Grant.

I do hereby certify that the above and foregoing is
a true copy from the Records of my Office as contained
in Book E, pages 246 + 247.

Given under my hand at the Town of Nacogdoches
this 21st day of May A. D. 1868

R. W. Nelson
Surveyor for Nacogdoches Land Dist



Scale of 2000 units to the Inch

Var. 9° 15' East

Field notes of a survey of the Grant to Pedro Jose Espasa

Commencing at the South East cor of the grant to Jose Luis de La Bega on the Bayon Sa Nana from which a White Oak 14 in $N 58^{\circ} E$ 7 vs and a Hickory 10 in $N 85^{\circ} W$ 3 vs

Thence West 3000 vs. 2nd Cor. a Pine 40 in bears $N 45^{\circ} W$ 6 vs. and a B. J. 8 in bears $S 25^{\circ} E$ 12 vs

Thence $S 14^{\circ} W$ 5000 vs to 3rd Cor. from which a Red Oak 14 in $S 72^{\circ} W$ 17 vs. and a B. J. 6 in $S 34^{\circ} E$ 9 vs

Thence East 3000 vs to the Bayon Sa Nana 4th Cor. from which a Water Oak 16 in $S 8^{\circ} E$ 6 vs. a Black Ash 14 in $N 40^{\circ} E$ 5 vs.

Thence up said Bayon with its meanders to the Reg. Surveyed Nov. 28 1837. Area 2602 acres of Land,

John Barry
Surveyor

B

I do hereby certify that the field notes and plot on the
reverse side of this sheet are a true copy from the
Records of My Office as contained in Book T, pages
247 + 48.

Given under my hand at the Town of Macaydo.

Chy this 21st day of May A.D. 1868

A. A. Nelson

Surveyor for Macaydo Land Dist