

M. C.



The State of Texas
Robertson Land District

I Wm M. Love a Deputy Surveyor for Robertson Land District Certify officially that the above Sketch or diagram correctly represents the position of Rachael Leach's, Jehu Peoples & Lewis Latham's Leagues in connection with other Surveys: And that the East corner of the Lea: Mk: Jehu Peoples may be found at a point S 60 W 30' or S 45' E 350 or from the S. E. Corner of the Robertson Co. School League also N. E. Cor. of J. O. Daniels 1/2 Lea:

The Dist. Surveyor should have certified to the correctness of the above sketch before it could be recognized.

Dist. Surveyor offic.
Robertson Land District

William M. Love
D. S. R. L. O.

I B. Chambers District Surveyor for Robertson Land District hereby Certify that Wm M. Love who makes the above return is a Deputy for this District duly bonded & sworn
Springfield July 24th 1854
B. Chambers
Dist. Sur. R. O.

File 7.

1868

File 22.

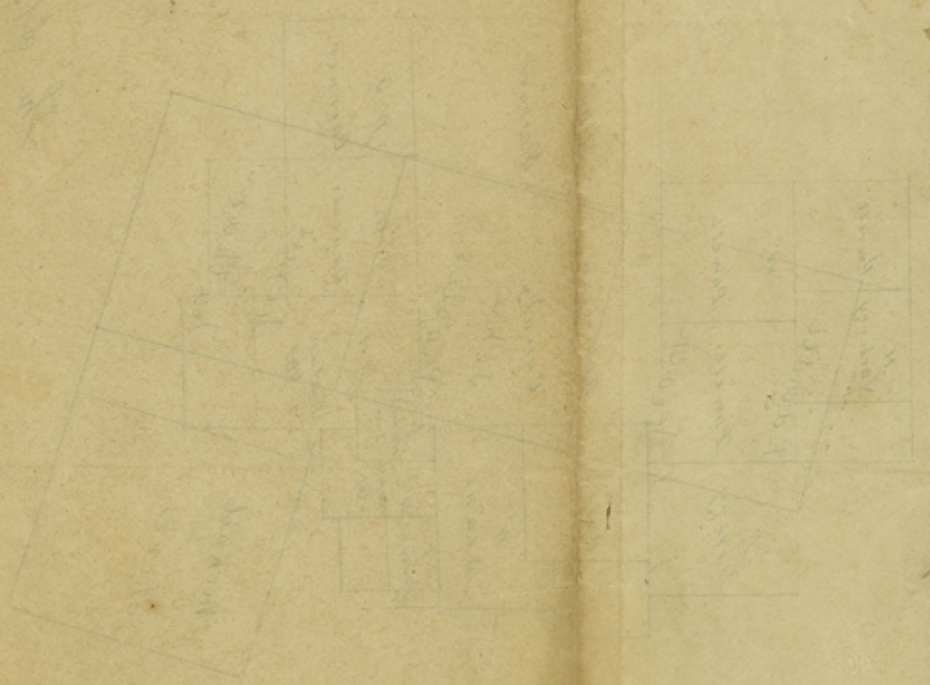
Navarro Co. near Corsicana.

Received March 20/54.

Wm M. Love's SK of Surs near Corsicana.

Dated Jan. 24, 1854.

Filed Mar. 20, 1854.



Wm M. Love

Counter 32314