

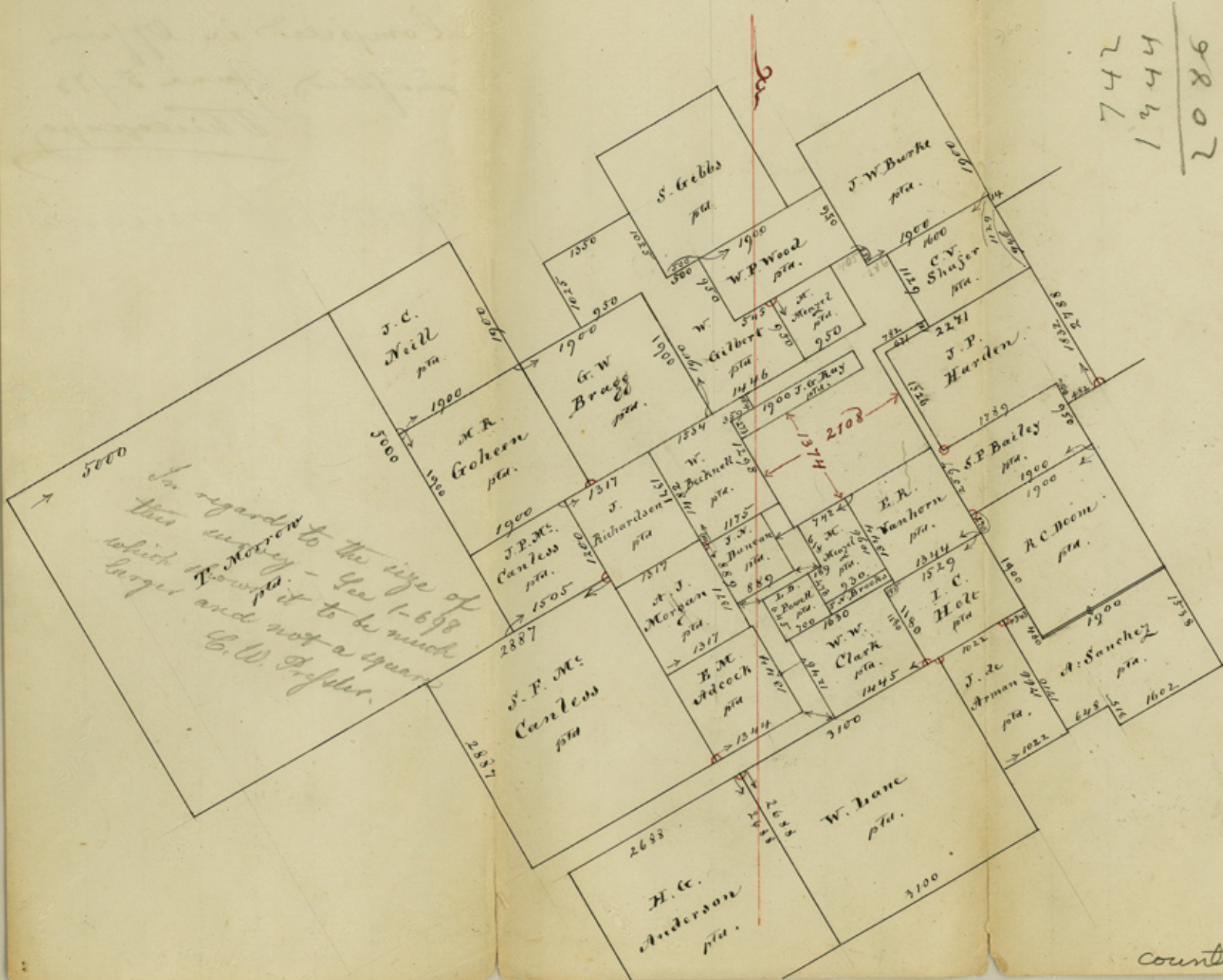
A Copy to be made  
for the Surveyor

Navarro Co. East of Corsicana  
2000 vs. to the inch.

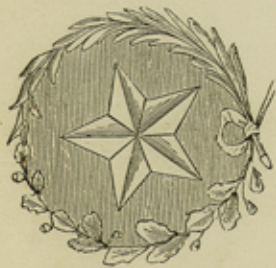
742  
1944  

---

2086



In regard to the size of  
this survey - See 1-688  
which shows it to be much  
larger and not a square  
G.W. Pfeiffer



General Land Office,

AUSTIN, TEXAS, .....18

7244  
3490  
65-1960  
28976  
21732  
25191-560

file No 14  
Navarro Co.  
Compiled in office  
and filed June 5. /73  
Thillpage  
East of Corsicana.