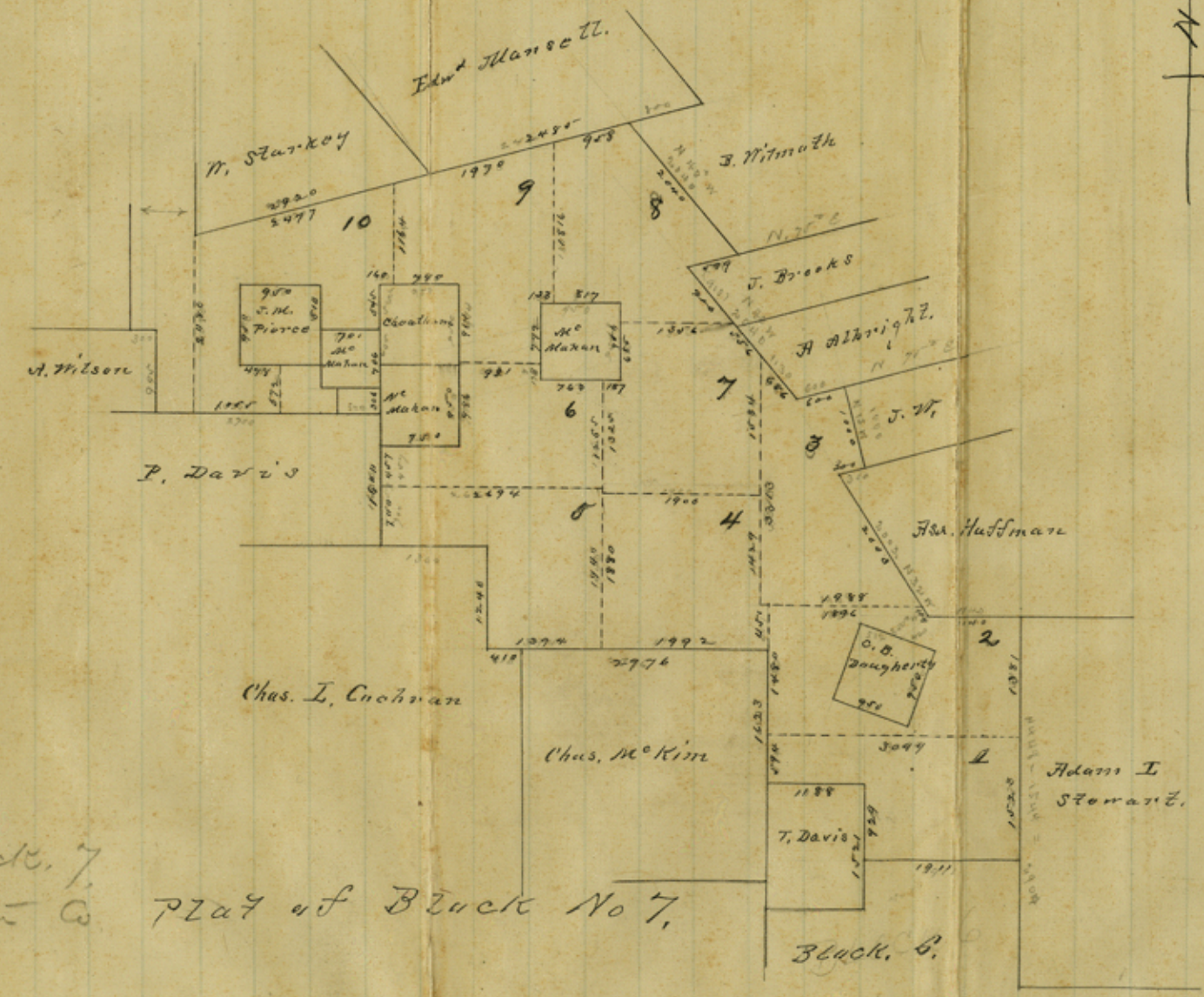


1186
 708
 1527



Compare with A.C. in Jasper S. 478
 Plain

7/14/93

Block 7
 Section 2

part of Block No 7,

Block 6.

B. A. Parker Co. N. E. 1/4 and full W. 1/4 of Section 7
 and part of the E. 1/4 of Section 8
 of Twp. 30 N. R. 10 E. S. 10
 Sec. 7, Twp. 30 N. R. 10 E. S. 10
 County of Wayne, Michigan
 B. A. Parker
 County Surveyor, Mich. S. 10
 1893
 1186
 708
 1527
 7/14/93
 Compare with A.C. in Jasper S. 478
 Plain
 7/14/93
 Block 7
 Section 2
 part of Block No 7,
 Block 6.
 1186
 708
 1527

Counter 32380

File #
Sketch Block No 7
Newton Co.
CANNATIONS SKETCH

3 miles South of Newton

Filed Aug 19/76.
Reuben Fisher,
Chf. Secy.