

Sketch # 2,
on Sabine R. near Jas.
Armstrong.
Filed April, 18, 1848.
Newton Co

General Land Office

U. S. DEPARTMENT OF THE INTERIOR
GEOLOGICAL SURVEY
WASHINGTON, D. C.



counter 32382

I hereby certify that the plot of Block 2105
in Anson County Tex as herein represented is
correct in accordance with actual survey and that
the courses and distances noted are in accordance
therewith.

J A Nation
County Surveyor Newton Co

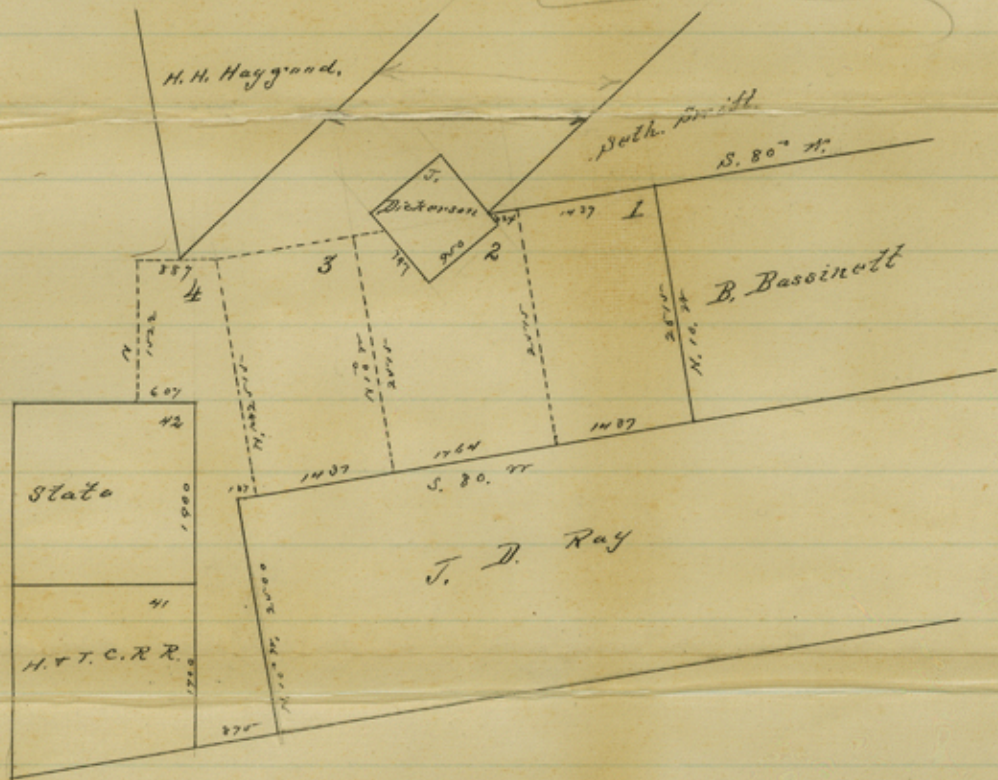
#12

File 12.
Block, No 5, 12,
Norton Co.

20 miles south of
Newton.
CAnations SKETCH.

Filed Sept 2/76.
Rhea & Fisher,
Chgo.

This sketch is entirely wrong and
 nothing but an imagination of the
 surveyor. Thickspape



E. Goodwin

Block No 5 Northern Co

T & N. O. R. R. Co

Scale 2000 ft = 1"

counter 32365

#1

2