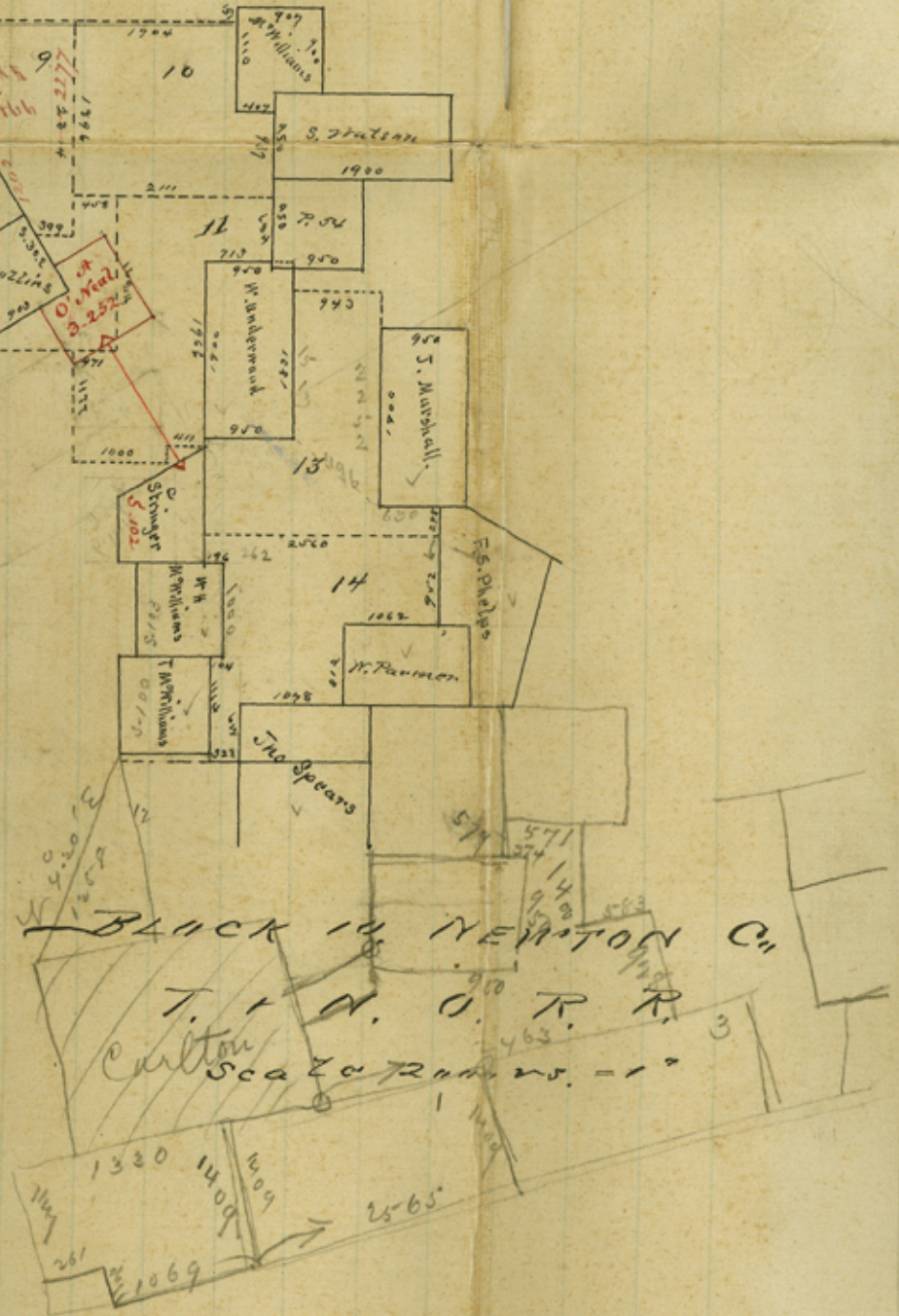




The N.W. line of G. Stringer intersects
 the S.E. line of the Above O'Neal survey
 very passing both S corners thereof
 as shown in Stringer's field notes §-102:
 this sketch leaves a variance of 1500 vs. here
 between the two lines
 This



BLACK IN NEWTON CH
 T. & N. O. R. R.
 Skazo R. 1000

The connection between Haggard's S.E. corner
 and Stringer's S.W. corner, as shown in this
 sketch is entirely erroneous. See field
 notes of A.C. Stringer 3-107. p. 27. J.C.

I hereby certify that the above plat of
 Block No 10 Chester Co. there is a true
 and correct representation of the location
 of the various surveys thereon plats and that
 the courses and distances are in accordance
 with actual survey

J. A. Newton

County Surveyor Chester Co.

File 14.
BLOCK, No 10
NEWTON, CO.
CANATIONS SK,
3 1/2 Miles N E of the
Town of Newton.

This sketch is error
means July 19/81
see remarks within

Filed Sep 2/76.
Rhoads Fisher,
Chf. Eng.

A. R. Olcott