

DANIELL ENGINEERING COMPANY
CIVIL ENGINEERS
AND
SURVEYORS

Beaumont, Texas
April 29, 1930;

Commissioner of General Land Office,
Austin, Texas.

Dear Sir:

I beg leave of you to make the following report of a resurvey, which I made of Section No. 32 of the H.&T.C.R.R. Company by virtue of Article No. 25/1301, issued by the Commissioner of the General Land Office, and is situated in Newton County, Texas and is owned and occupied by Mrs. R. Turner. This Survey was made at her request. She wishes to obtain a patent thereon.

I began the survey at the N.E. corner of the Section No. 32, it being a pine knot also a metal stake branded H.&T.C.R.R. Section No. 32, from which a black gum 13" diameter, marked X bears N. 55° W 3.24 varas distance and a black gum 15" diameter marked X bears N. 38° E. 3.11 varas distance. These old marks are very old, and the trees are black gums and not sweet gums as called for in the original field notes.

Thence N. 82° 15' W. on an old hacked and blazed land line 1900.8 varas to pine knot corner, it being the S.W. corner of Section No. 31 of the H. & T. C. R. R. Survey;

Thence N. 30 E. 68 varas to pine knot corner;

Thence N. 87° W. on old hacked and blazed land line 264 varas to pine knot corner and metal corner branded H. & T.C.R.R. Section No. 32;

Thence S. 6° 27' W. on an old hacked and blazed land line, at 1543 varas crossed Big Cypress Creek at 1773.5 varas passed metal stake branded N. 3 H. & T. C. R. R. and being the S.E. corner of the J.B. Smythe Section, at 2203.7 varas pine knot corner;

Thence S. 89° 41' E. on an old hacked and blazed land line 1593.4 varas to pine knot corner in the West line of the N. Guthrie League of land;

Thence North on the said West boundary line, at 210 varas crossed Big Cypress Creek, at 647 varas metal post corner, it being the N.W. corner of the N. Guthrie League of Land and there were hacked trees and an old wire fence on this line;

DANIELL & DANIELL

ESTABLISHED 1891

CIVIL ENGINEERS

POSTOFFICE BOX 105

BEAUMONT, TEXAS.

Thence East on old hacked land line and old wire fence line, and being the North boundary line of the N. Guthrie League of land, 729.9 varas to pine knot corner;

Thence N. $30^{\circ}12'$ E. on old hacked land line and wire fence line 1215.36 varas to the place of beginning, containing 712.91 acres of land, thus completing the survey of this section.

The field notes given in this report are not exactly like the ones given in the original survey, but fully describe the Section as it exists upon the ground today. The line are well defined and the corners are well established upon the ground as set forth in this report.

Respectfully submitted,

C. B. Daniell
Licensed State Land Surveyor.

A RESURVEY OF H. & T.C.R.R. SEC. 32
 NEWTON CO., TEXAS.
 HOMESTEAD OF MRS. R. TURNER BUNA, TEXAS.
 SCALE: 1 IN. = 400 VRS. SUR. AUG. 15, 1929.

L. B. Daniell,
 LICENSED STATE LAND SURVEYOR
 C. C. SHEPARD C.C.
 SHELBY O'BRIEN C.C.

SEC. 30

SEC. 31

SEC. 32

712.91 AC.

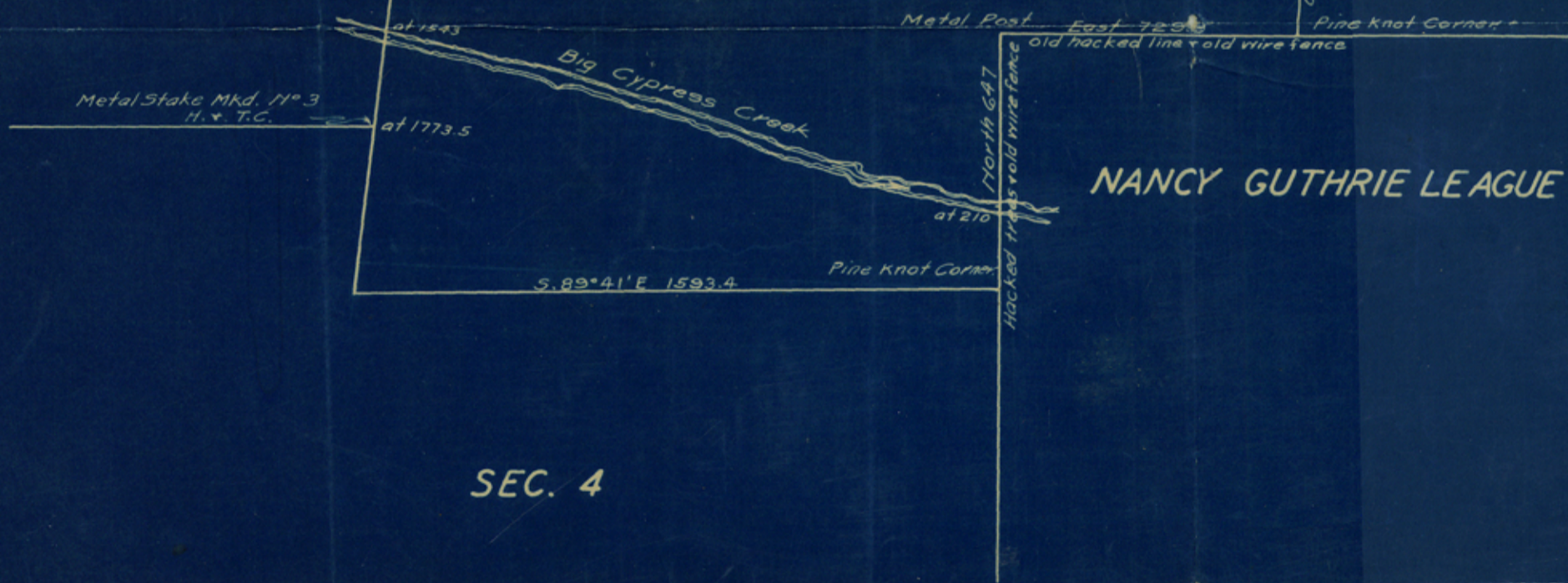
SEC. 1

T.C. R. R.

N

VAR. 8° 15' E.

J.B. SMYTHE SURVEY



52

Counter 32923

ic No. Sk Files A1

Newton County

Suro. Sk + State

for Field Notes #32
NATC Ry Co

Filed June 18 - 1930

JH Walker Com'r.

Blucher

File Clerk

53

ic No. _____

_____ County

_____ Field Notes

Filed _____ 19

Com'r.

_____ File Clerk