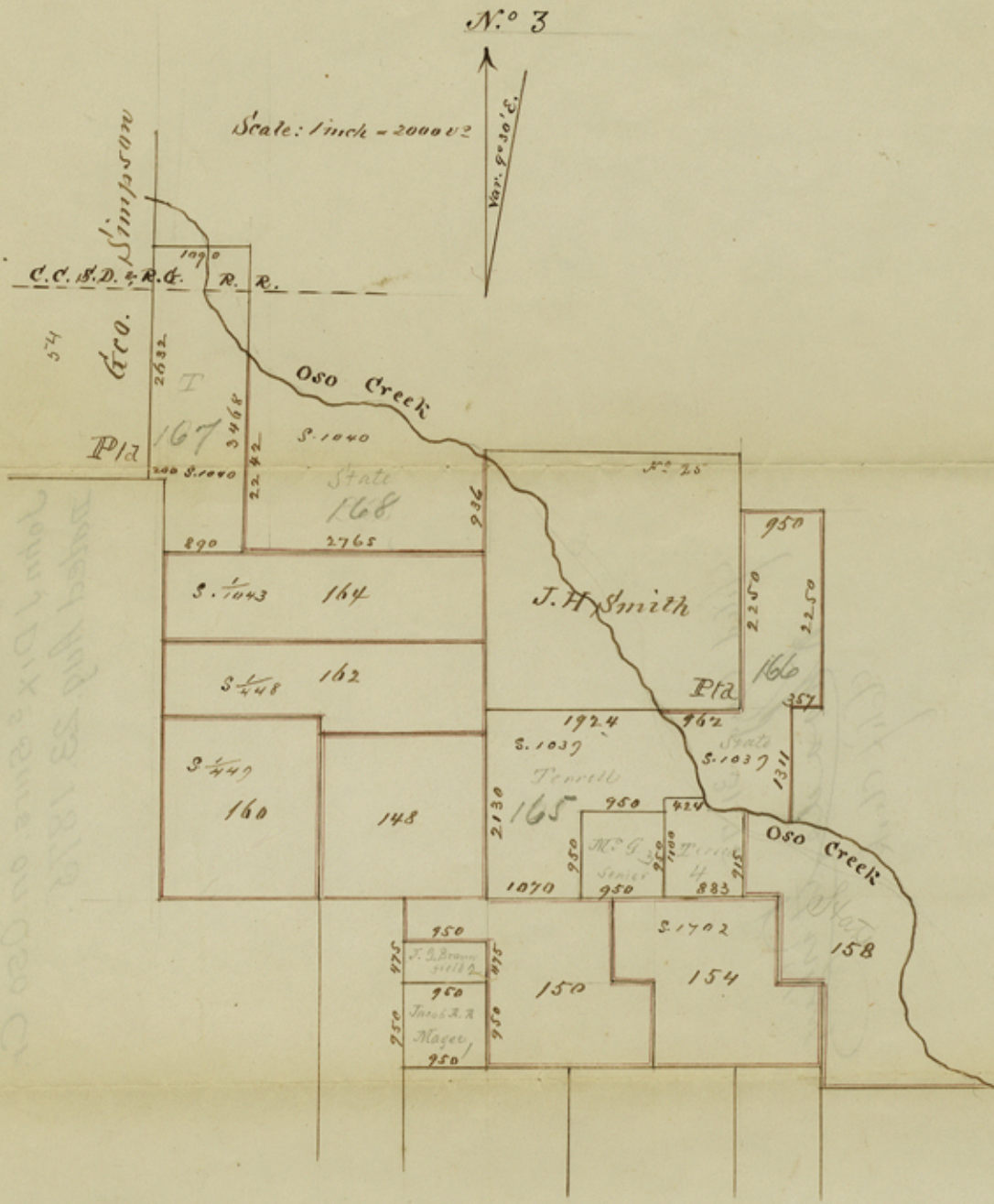


J. R.

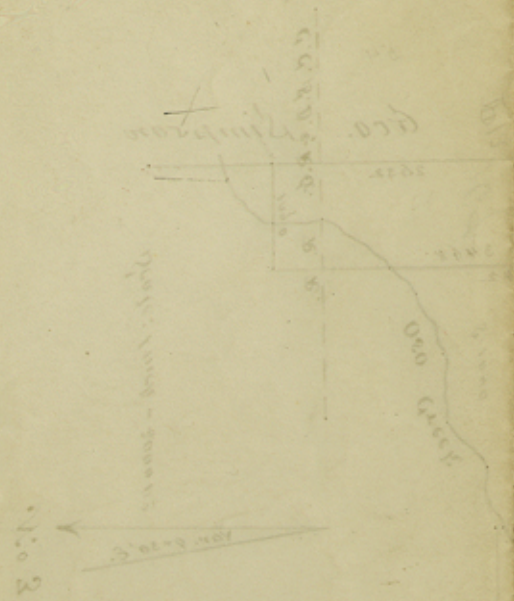


I John J. Dix, Surveyor of Nueces Land District do hereby certify that I have examined the foregoing Survey and find it correct and have adopted the same this 23^d day of August 1875. and are of Record in my office in Book III N^o III Page. 153. 154. 155. 156.

John J. Dix
 Surveyor, N. L. D.
 counter 32551

File 19
19

Nueces Co
John J Dix^s Surs. on Oso Cr.
dated Aug. 23. 1875.



filed Aug. 31. 75.
Rhoads Fisher,
Chf Clerk

Proffer

county 32552