



Scale 20000<sup>rs</sup> to one inch

*John J. Dix*  
*Surveyor*  
*of*  
*the*  
*Land*  
*Office*  
*N. L. D.*



counter 31572

I John J. Dix, Surveyor of New Land District do hereby certify that the foregoing plat has been examined by me, and that I find it correct and have adopted the same this 26<sup>th</sup> day of January A. D. 1875

John J. Dix sur  
N. L. D.

B.  
NUECHAS CO SH FILE  
No 26

NUECHAS CO

SR. F. 26

counter 32693



Scale 2000  $\text{ft}$  to one inch.

I John J. Dix, Surveyor of Illinois Land District do hereby certify, that I have examined the foregoing plat and find it correct and accept the same this 25th day of January A. D. 1866

John J. Dix  
Surveyor N. D. D.

counter 32574

*[Faint, illegible handwritten notes]*

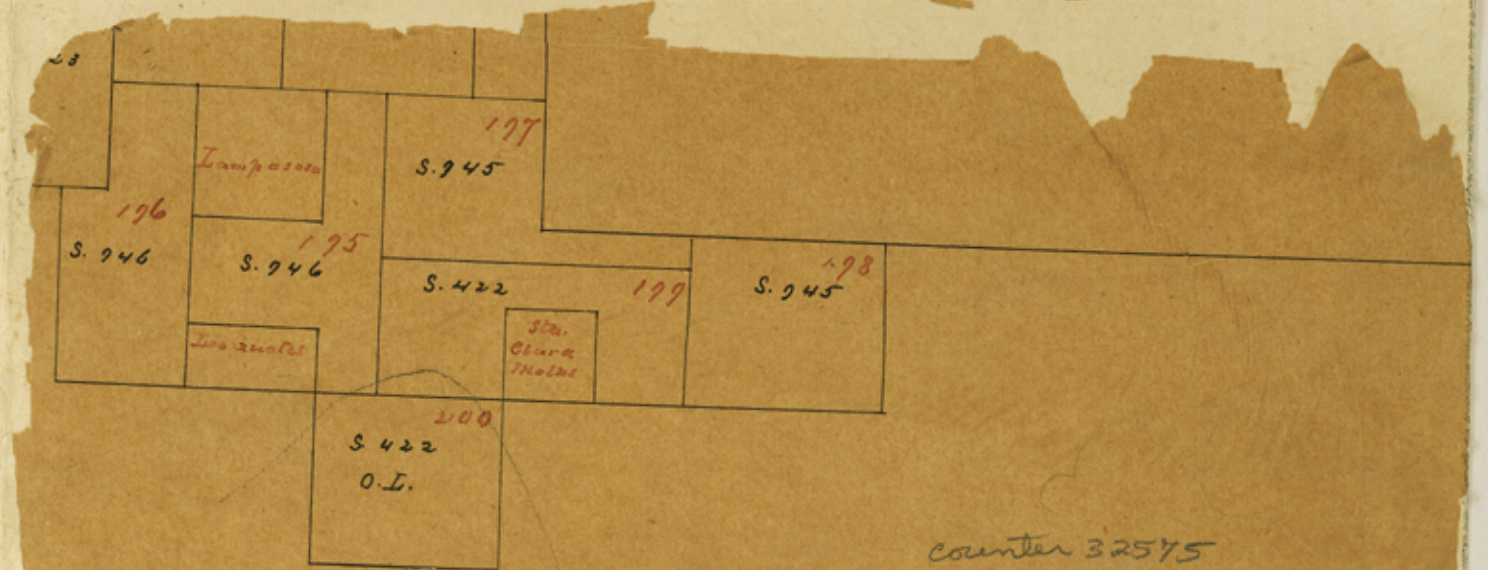


*Handwritten notes in cursive script, possibly indicating survey details or ownership information.*

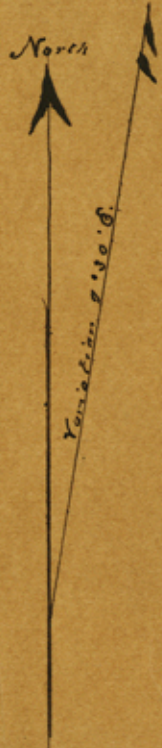
I John J. Dix Surveyor of Mexico Land District do hereby certify that the foregoing plat has been examined by me, and I find it correct and adopted the same this 26<sup>th</sup> day of January A. D. 1876

John J. Dix  
Surveyor N. L. D.

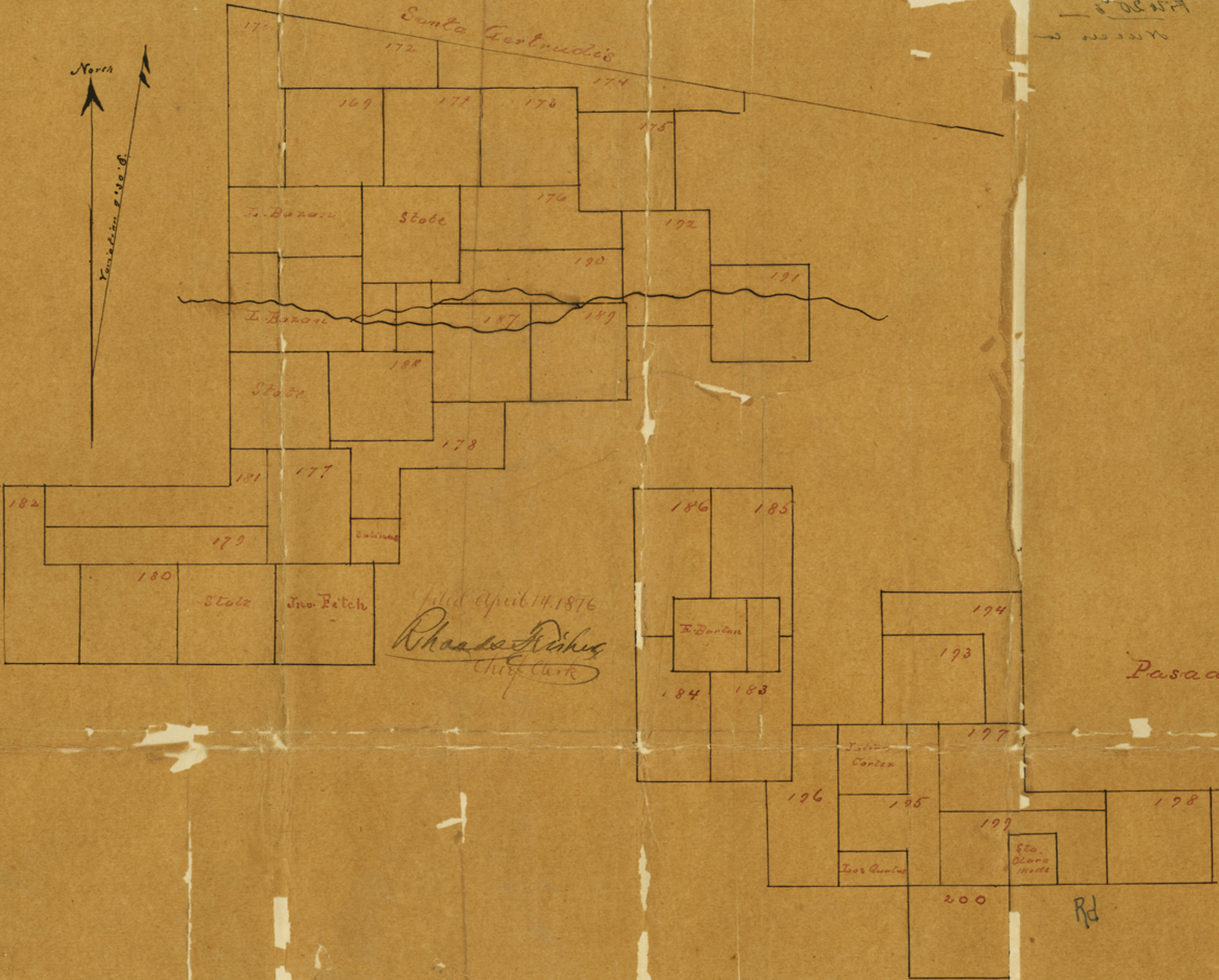
La



Counter 32575



*Santa Gertrudis*



*Filed April 14, 1876*  
*Rhodes Fisher*  
*Chief Clerk*

*Pasadena*

*Rd*

*counter 32586*

*FILED*

Ysidro Benavides



10/16/1876  
 Ysidro Benavides  
 Surveyor

I John J Dix Surveyor of Mexico Land District do hereby certify that I have examined the foregoing plat and find it correct and have adopted the same this 26<sup>th</sup> day of January A. D. 1876.

John J Dix  
 Sm N. L. T

counter 32577