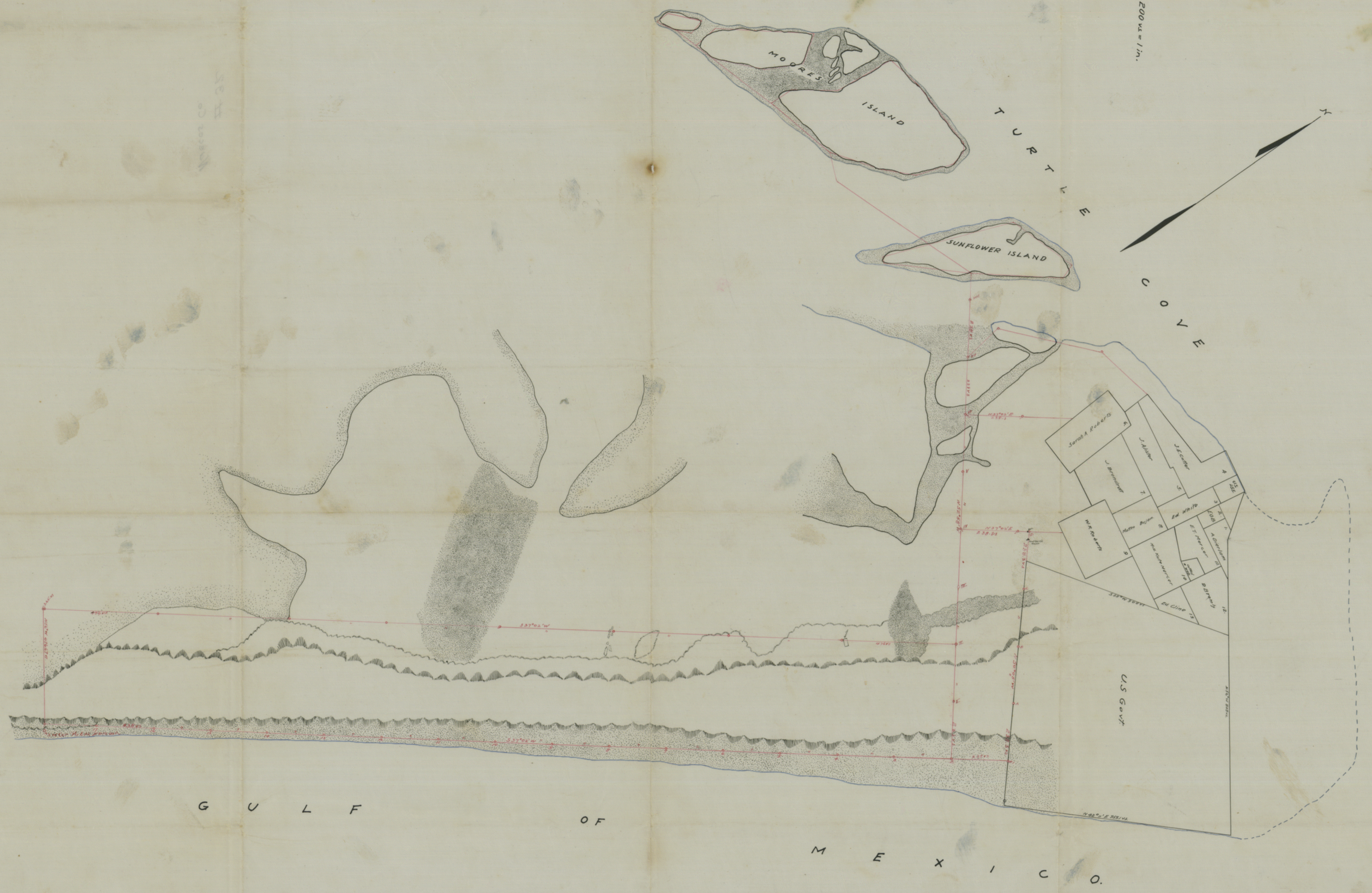


Scale: 200' = 1" / in.



ARANSAS PASS

E7

The State of Texas,)

County of Nueces.)

Field notes of a portion of the Public Domain situated on Mustang Island, surveyed in accordance with and by virtue of instructions from Hon. J. J. Terrell, Commissioner of the General Land Office, issued under an Act of the 30th Legislature, House Bill No. 707, providing for sale of lands on Mustang Island. -----

----- Said Survey is situated in the Northern portion of Mustang Island about 20 miles East of Corpus Christi, Texas. -----

----- Beginning at a point in the Southern boundary line of Survey No. 632, made for the benefit of the United States Government - marked by a joint of tile pipe about 6" in diameter, and hereinafter referred to as Corner No.1., whence an iron pipe, the South East corner of said Survey No. 632 bears S. 50° 05' E. 186 varas, and a 6" tile pipe bears S. 50° 05' E. 166 varas.-- Thence S. 37° 02' W., at 238 varas a 6" tile pipe for Corner No. 2, whence the hills are 60 varas West, and M.H.W.M. (mean high water mark) is 125 vs. East; at 476 vs. a 6" tile pipe for corner No. 3,; at 714 vs. a 6" tile pipe for corner No. 4 whence the hills are 15 vs. West and M.H.W.M. is 97 vs. East; at 952 vs. a 6" tile pipe for corner No. 5, whence the hills are 20 vs. West, and M.H.W.M. is 77 vs. East; at 1190 vs. a 6" tile pipe for corner No. 6, whence the hills are 35 vs. West, and M.H.W.M. is 67 vs. East; at 1428 vs. a 6" tile pipe for corner No. 7, whence the hills are 45 vs. West, and M.H.W.M. is 60 vs. East; at 1666 vs. a 6" tile pipe for corner No. 8, whence hills are 60 vs. West and M.H.W.M. is 57 vs. East; at 1904 vs. a 6" tile pipe for corner No. 9, whence hills are 50 vs. West, and M.H.W.M. is 48 vs. East; at 2142 vs. a 6" tile pipe for corner No. 10, whence the hills are 50 vs. West, and M.H.W.M. is 40 vs. East; at 2380 vs. a 6" tile pipe for corner No. 11, whence the hills are 50 vs. West, and M.H.W.M. is 30 vs. East;-- at 2618 vs. a 6" tile pipe for corner No. 12, whence the hills are 35 vs. West and M.H.W.M. is 27 vs. East; at 2856 vs. a 6" tile pipe for corner No.13, whence hills are 35 vs. West, and M.H.W.M. is 26 vs. East; at 3094 vs. a 6" tile pipe for corner No. 14, whence the hills are 25 vs. West and M.H.W.M. is 27 vs. East; at 3332 vs. a 6" tile pipe for corner No. 15, whence the hills are 15 vs. West., and M.H.W.M. is 30 vs. East; at 3570 vs. a 6" tile pipe for corner No. 16, at base of hills, whence M.H.W.M. is 30 vs East; at 3808 vs. a 6" tile pipe for corner No. 17, at base of hills whence M.H.W.M. is 43 vs. East; at 3880 the hills are 25 vs. East of line and M.H.W.M. 55 vs. East;--

at 4024.39 vs. a 6" tile pipe for the South East corner of this survey set at the intersection with the South boundary of public domain on Mustang Island, whence a 6" tile pipe, the South East corner of said public domain bears S. 56° E. 27 vs.; thence N. 56° W. with South boundary of said public domain, at 160.29 vs., a hub stake on last large hill on this course; at 162 vs. area of shifting sand begins; at 476.67 vs. a pine post 3" X 6" set 3 ft. in ground, for South West corner of this survey.-----

---- Return to corner No. 1, Thence N. 50° 05' W. with the South boundary of Survey No. 632, at 65 vs. enter hills; at 238.3 vs. a 6" tile pipe for corner No. "A"; at 476.6 vs. a 6" tile pie for corner No. "B"; at 520 vs. last large sand hill on this course; at 714.9 vs. a 6" tile pipe for corner No. "C"; at 832.85 vs. a 6" tile pipe, the South West corner of Survey No. 632; at 854.82 vs. Koot Curry's fence; at 916.85 vs. Koot Curry's house; at 953.2 vs. a pine post, 3" X 6" set 3 ft. in the ground for corner "D".-----

909
---- Thence go to corner No. 2.; Thence N. 52° 58' W. at 238 vs. a 6" tile pipe on summit of sand dune, for corner No. "I" on this course; at 397 vs. leave last large sand dune; at 476 vs. a 6" tile pipe for corner No. "II"- in small open space; at 624.73 vs. a hub stake on sand hill. -----

101
---- At this point sand dunes and hills end, and enter grassy land, hilly in places; at 714 vs. a 6" tile pipe for corner No. "III"; at 952 vs. set a tile pipe for corner No. "IV"; at 1190 vs. a pine post 3" X 6"- 3 ft. in ground for corner No. "V"; at 1253 vs. center of sand flat drain; 55 vs. wide, running S. 30° W. about 250 vs, whence it turns and runs Eastward. This drain extends 110 vs. to the North East^{of this point}. The Country here is low, and in places grassy. It is about one foot higher than the drains which run inland from the bayou and the Bay. At 1428 vs. a 6" tile pipe for corner No. "VI" whence a sand flat drain 55 vs. wide runs N. 5° W. to the Bay. At about 350 vs. on this course it turns to the West; at 1645 vs. the East bank of a wide bayou which runs S. 54° W.; at 1666 vs. a pine post 3" X 6" - 3 ft. in the ground for corner No. "VII"; at 1904 vs. a pine post 3" X 6" set 3 ft. in ground for corner No. "VIII", in Bayou in 8" of water at this time, with Norther blowing; at 2015.92 vs. set a hub "A" on Sunflower Island, about 10 vs. beyond ^{East} West bank of Bayou; Thence S. 69° 02' W. at 628.25 vs. a stake in water on East bank of a bayou; thence N. 68° 25' W. 122.14 vs. to a 2"x 4" pine hub, "B", driven flush with the ground on Moore's Island, about 7 vs. beyond West shore of bayou, whence beacon in Bay bears N. 43° 45' W;--

Light House bears N. 30° 35' E.; U. S. L. S. S. at Tarpon - Look out Tower - bears N. 75° 05' E; thence with meanders of shore line of said Moore's Island, which consists of three parts, S. 75° 10' W. at 322.34 vs, stake #1, thence S. 71° 51' W, at 303.86 vs. stake #2, at 397.08 vs. stake #3, at 503.51 vs. stake #4; thence S. 57° 05' W. 85.99 vs. stake #5; N. 2° 53' W. 59.02 vs. stake #6; N. 47° 33' E. 143.46 vs. stake #7; S. 13° 44' E. 66.46 vs. stake #8; S. 46° 15' W. 64.34 vs. stake #4.- Return to stake #7; thence N. 62° 19' E. 65.28 vs. stake #9; S. 6° 47' E. 106.9 vs. stake #3.- Return to stake #9, thence N. 37° 22' E. 412.07 vs. stake #10; S. 35° 1' E. 134.60 vs. Stake #11; S. 26° 24' W. 154.44 vs. stake #12; S. 45° 51' W. 225.92 vs. stake #2.- Return to stake #1, thence with meanders of said Island, N. 0° 58' E. 98.9 vs; N. 35° 59' E. 191.93 vs; N. 4° 22' E. 257.23 vs; N. 76° 29' E. 154.42 vs; N. 86° 19' E. 310.79 vs; S. 51° 34' E. 41.76 vs; S. 14° 46' E. 62.72 vs; S. 18° 7' W. 162.96 vs; S. 43° 13' W. 148 vs; S. 52° 54' W. 224.42 to hub #B, point of beginning.-----

---- Moore's Island consists of three islands; the one to the East being the most important. It is covered with a good layer of loam, and is capable of being cultivated. It is undoubtedly the best land of this kind in the public domain, on the Island. It stands from 2 to 6' feet above mean high tide. The other two islands stand about 2 feet above mean high tide but the land here is more sandy- more like the sandy loam in the Northwestern part of Mustang Island. -----

---- Thence return to stake #A, on Sunflower Island, thence with meanders of island shore, N. 37° 14' E. 384.68 vs; N. 20° 58' W. 65.26 vs; S. 71° 0' W. at 238 vs. on this course a small arm of the cove makes into the island at right angles for 75 varas, at 304.16, a stake; thence S. 19° 56' W. 562.97 vs; S. 71° 59' E. 28.87 vs; N. 41° 57' W. 363 vs. to hub "A" point of beginning-----

---- Then go to corner No. "VII", to run connecting line to J. E. Cotter's North West corner. Beginning at corner No. "VII", thence N. 9° 29' W. at 144 vs. leave sand drain and enter grassy land, at 176.49 vs. a "2" x "4" pine post 3 feet in the ground for corner, whence East bank of Bayou is 7 vs. to the left; thence N. 47° 30' E. at 100 vs. East bank of Bayou is 15 vs left, at 180 vs. bayou is 15 vs. left, at 245 vs. South bank of arm of bayou, at 272 vs. North bank of same; at 360 vs. Bayou is 16 vs. left, at 445.18 vs. a "2" x "4" pine post, 3 feet in ground for corner, whence Bayou is 25 vs. left; thence N. 76° 53' E. at 75 vs. the Cove is 83 vs. left; at 145 vs.

Cove is 87 vs. left, at 215 vs. Cove is 83 vs. left, at 259.74 vs. J. E. Cotter's North West corner,-----

10
---- Then go to corner No. VI.-- Beginning at this corner, thence N. 37° 02' E. at 238 vs. a pine post 3" x 6" for a corner, at 449.98 vs. intersect West boundary line of Sarah A. Robert's Survey No.6, whence North West corner, of said Survey No. 6, bears N. 3° 30' E. 181.87 vs.-----

For connection with William H. Roberts survey, begin at corner No. ~~VI~~^{IV}; thence N. 37° 02' E. at 238 vs. a pine post 3" x 6" for a corner; at 271.44 vs. Curry's stable; at 285.88 vs. intersect South boundary line of Survey No. 632 produced, at corner No.D on that course; at 428.14 vs. intersect South boundary line of Wm. R. Roberts Survey No. 9, whence South West corner of said Survey No. 9, bears N. 81° 26' W. 45.54 vs.-----

II
---- Then go to corner No. "II".- Thence S. 37° 02' W. at 141.16 vs. a stake at entrance to area of shifting sand, whence dunes are 20 vs. East, thence with outline of said area of shifting sand, S. 16° 33' W. 99.72 vs.; N.74° 50' W. 135.83 vs; N. 33° 29' W. 171.36 vs. This point is at the Western end of shifting sand area. Sand flat begins North West 150 vs. from here and branches about 225 vs. from here, one branch running South West, the other North; thence S. 79° 56' E. 210.96 vs; from this point, small hills of drifting sand extend Northward to the South boundary line of Survey No.632 on a course through a stake set on the line West from corner No. 2 on shore, at 713.99 vs. from said corner No. 2. This bank of hills averages 75 vs in width; Thence S. 45° 17' E. 64.9 vs. to point of beginning; Thence continuing original course of S. 37° 02' W. at 250 vs. sand dunes are 75 vs. East; at 456.12 vs. enter small garden, at 473.9 vs. leave said garden which is about 20 vs. by 30 vs.; at 476 vs. a pine post 3" x 6"- 3 feet in ground for corner corresponding to corner No. 4 on shore line; at 558.19 vs. hills are 110 vs. East - edge of sand hills is 70 vs. to West, said edge extending parallel to this course Northward to the sand area; at 830 vs. edge of hills is 70 vs. East; at 952 vs. a pine post 3" x 6" for corner opposite corner No. 6 on shore line; at 1260.12 vs. a stake on West edge of a ridge 75 vs. wide running 110 vs. East; hills are 110 vs. to East here; 540 vs. West of here is a large sand flat and from here West the land is covered with standing water after heavy rains, forming fine duck ponds in winter. Sand flats to West of here are full when the tide in the Bay is up; at 1428 vs, a pine post 3" x 6" for corner opposite corner No. 8 on shore line; at 1665 vs.hills

are 130 vs. to East; at 1830 vs. hills are 115 vs. East; at 1904 vs. a pine post 3" x 6" for corner opposite corner No. 10 on shore line; at 1958 vs. a stake at entrance to an area of shifting sand,- thence with boundary of said shifting sand, N. 33° 43' W. 531.18 vs. a large sand flat begins 75 vs. North East of this point running North, also South West of here a salt flat begins and runs about West to the Bay. This latter flat is very wide. Thence S. 75° 26' W. 288 vs to a stake at the Eastern extremity of salt flat; thence S. 28° 5' E 311.11 vs; S. 39° 53' E. at 194.4 vs. pass a tall post 11.5 vs. to right, at 288 vs. a small lake 9 vs. to right, at 322.93 vs. a stake; thence S. 78° 45' E. 159.84 vs; here sand drifts continue 75 vs. to East; thence N. 51° 27' E. 125.11 vs. whence sand drift continues 75 vs to the South East; N. 18° 1' W. 111.78 vs. to point of beginning. Thence continuing with original course, S. 37° 02' W. at 2380 vs. a pine post 3" x 6"- 3 feet in ground for corner opposite corner No. 12 on shore line; at 2490 vs. sand hills are 55 vs. to East; at 2856 vs. a pine post 3" x 6" - 3 feet in ground for corner opposite corner No. 14 on shore line.-----

---- This post at base of sand hills. At this point we pass the North margin of a large sand flat extending to the Bay. Its Eastern margin lies almost along the direction of this West line of Survey; at 3110 vs. hills are 145 vs. to East; at 3332 vs. a pine post 3" x 6" - 3 feet in ground for corner opposite corner No. 16 on shore line; sand hills 145 vs. to East here; at 3373.84 vs. a stake at entrance to a shifting sand area; thence with Eastern margin of same, S. 1° 16' W. 175.57 vs; S. 0° 18' E. 348 vs. to a stake in South boundary line of this survey whence the South East corner of this public domain bears S. 56° E. 187.29 vs; Thence returning to line stake at 1469.84 vs. in West boundary of this survey, continue original course of S. 37° 02' W. at 3808 vs. a pine post 3" x 6"- 3 feet in ground for a corner; at 3811.65 vs. a pine post 3" x 6" - 3 feet in ground, the South West corner of this survey.-----

Robert J. Mercer,)
 Everett Stiles,) :- Chain Carriers.
 John Mercer.)

The State of Texas,)
County of Nueces.)

I, C. F. K. v. Blücher, a duly qualified Special State Surveyor for the State of Texas, do hereby solemnly swear that the above survey, map and field notes were made by me, and are true and correct to the best of ^{my} knowledge and ability. -----

----- Done at Corpus Christi, Texas, on this the 16th day of November A.D. 1907.

Signed C. F. K. v. Blücher,
Special State Surveyor

Sworn to and subscribed before me
this the 16th day of November A. D. 1907

H. E. Futer Clerk
County Court, Nueces County
Texas.