

FROM THE OFFICE OF J. STUART BOYLES, C. E.
PROFESSIONAL ENGINEER
LICENSED STATE LAND SURVEYOR
HOUSTON, TEXAS

RECEIVED

FEB 28 1953

RETURNED TO MAIL

To: Honorable Bascom Giles
Commissioner, General Land Office
Austin, Texas

Dear Sir:

The following field work was done in connection with the location of several state subdivision tracts located in the upper part of Red Fish Bay, Nueces County, abutting the Aransas Pass - Port Aransas Causeway.

The Aransas Pass - Port Aransas Ship Channel and the Morris and Cummings Cut were located. These two channels control the location of the Aransas Dock & Channel Company Surveys Nos. 651 and 652. Using the channels as control, the two surveys were located in accordance with the field notes in their respective patents.

The U. S. Coast & Geodetic Station "Draw" was recovered and tied in to pertinent topographic features. The State tracts were then constructed according to the instructions on the official General Land Office map entitled "Map of Corpus Christi Bay in Nueces County, showing Subdivision for Mineral Development" by Bascom Giles, Commissioner, General Land Office, Austin, Texas, dated May 5, 1950. The boundary lines of all tracts except where controlled by shore lines or some other predetermined boundary are perpendicular or parallel to a line of south $45^{\circ} 36'$ West on a true bearing from the U. S. Coast & Geodetic Survey triangulation station "Draw". The west or southwest corner of State Tract 309 was located South $45^{\circ} 36'$ West, 1900.8 varas from station "Draw".

The old original Ransom Island lease now comprises all of State Tracts 307B and 307C and a portion of Tract 307A. The following original corners of the Ransom Island lease were found on the ground and were used to control the location of the above three state tracts: The most southwestern corner, marked by a 1-1/2 inch pipe, the western ell corner marked by a 1-1/2 inch iron pipe and the most northwestern corner marked by a 6 inch oak post.

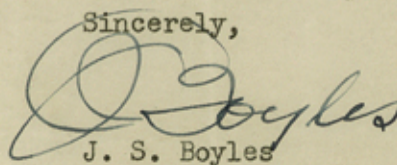
The original northern corner of the old Ransom Island lease was re-established by locating the south corner of Lot No. 710 of the town of Aransas Pass according to the official town plat of record in Plat Record Book No. 2, pages 10 and 11, of the Deed Records of San Patricio County, Texas.

The most eastern corner or the eastern ell corner of the old lease was not found. This corner forms the east corner of the present State Tract 307B. The corner was re-established at called distance from the original north corner of the old Ransom Island lease and on a course parallel to the upper southwestern boundary line of the old lease. This line as thus re-established is in accordance with the field work reflected by the field notes of Fred M. Percival, who staked out the Ransom Island lease in 1927. The line forms the southwest line of State Tracts 307 and 322.

The field work was done for the purpose of accurately locating the boundaries of the various submerged State Tracts shown on the accompanying map, No. 5137-R. This report does not purport to change the location of the boundaries of any of the patented surveys, the state submerged tracts or the old Ransom Island lease. The results of the field work reflects that the acreage content of the submerged State Tracts Nos. 307, 308, 309, 310 and 322 differs from the acreage of these tracts as shown on the official General Land Office map heretofore mentioned.

Corrected field notes of the above five submerged state tracts, filed in the County Surveyor's Records of Nueces County accompany this report.

Sincerely,


J. S. Boyles

JSB:RP

FROM THE OFFICE OF L. STUART BOYLES, C. E.
PROFESSIONAL ENGINEER
REGISTERED STATE LAND SURVEYOR
HOUSTON, TEXAS

RECEIVED

FEB 28 1934

Nueces Co. Sketch File 43
(See Letter Book 1574, p. 561)
Ref. S-1934 Ref. S-1937

To: Honorable Bascom Giles
Commissioner, General Land Office
Austin, Texas

Dear Sir:

The following field work was done in connection with the location of several state subdivision tracts located in the upper part of Red Fish Bay, Nueces County, abutting the Arkansas Pass - Port Aransas Causeway.

The Arkansas Pass - Port Aransas Ship Channel and the Morris and Cummings Gut were located. These two channels control the location of the Arkansas Dock & Channel Company surveys Nos. 651 and 652. Using the channels as control, the two surveys were located in accordance with the field notes in their respective patents.

The U. S. Coast & Geodetic Station "Draw" was recovered and tied in to pertinent topographic features. The state tracts were then constructed according to the instructions on the official General Land Office map entitled "Map of Corpus Christi Bay in Nueces County, showing Subdivision for Mineral Development" by Bascom Giles, Commissioner, General Land Office, Austin, Texas, dated May 2, 1920. The boundary lines of all tracts except where controlled by shore lines or some other predetermined boundary are perpendicular or parallel to a line of south 15° 36' West on a true bearing from the U. S. Coast & Geodetic survey triangulation station "Draw". The west or southwest corner of State Tract 309 was located south 15° 36' West, 1900.8 yards from station "Draw".

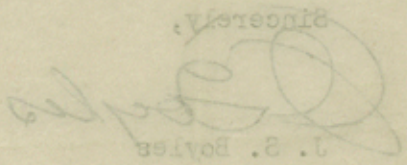
The old original Hanson Island lease now comprises all of State Tracts 307B and 307C and a portion of Tract 307A. The following original corners of the Hanson Island lease were found on the ground and were used to control the location of the above three state tracts: The most easterly corner, marked by a 1-1/2 inch pipe, the western all corner marked by a 1-1/2 inch iron pipe and the most northwestern corner marked by a 6 inch oak post.

The original northern corner of the old Hanson Island lease was re-established by locating the south corner of lot No. 710 of the town of Arkansas Pass according to the official town plat of record in Plat Record Book No. 2, pages 10 and 11, of the deed records of San Patricio County, Texas.

The most eastern corner of the eastern all corner of the old lease was not found. This corner forms the east corner of the present State Tract 307B. The corner was re-established at called distance from the original north corner of the old Hanson Island lease and on a course parallel to the upper southwestern boundary line of the old lease. This line, as thus re-established is in accordance with the field work reflected by the field notes of Fred M. Perovial, who staked out the Hanson Island lease in 1927. The line forms the southwest line of State Tracts 307 and 322.

The field work was done for the purpose of accurately locating the boundaries of the various submerged state tracts shown on the accompanying map, No. 5137-R. This report does not purport to change the location of the boundaries of any of the patented surveys, the state submerged tracts or the old Hanson Island lease. The results of the field work reflects that the average content of the submerged state tracts Nos. 307, 308, 309, 310 and 322 differs from the average of these tracts as shown on the official General Land Office map heretofore mentioned.

Corrected field notes of the above five submerged state tracts, filed in the County Surveyor's Records of Nueces County accompany this report.

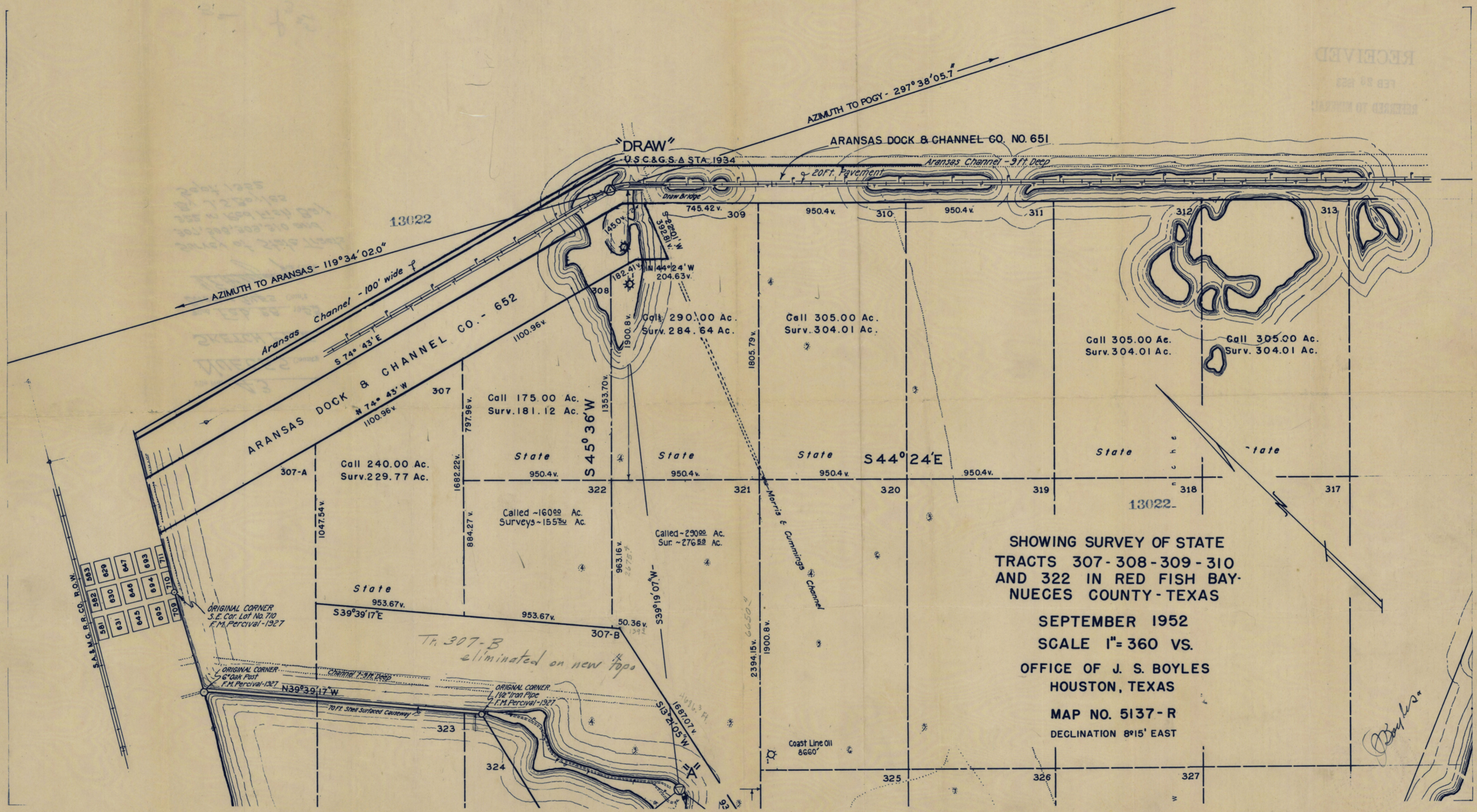
Sincerely,

L. S. Boyles

2/14/34

138:11

counter 32636

RECEIVED
FEB 28 1952
RETURNED TO MAILER



SHOWING SURVEY OF STATE
TRACTS 307-308-309-310
AND 322 IN RED FISH BAY-
NUECES COUNTY-TEXAS

SEPTEMBER 1952
SCALE 1"=360 VS.

OFFICE OF J. S. BOYLES
HOUSTON, TEXAS

MAP NO. 5137-R
DECLINATION 8°15' EAST

Boyles

B1

B1

SKETCH FILE No. 43
COUNTY NUECES