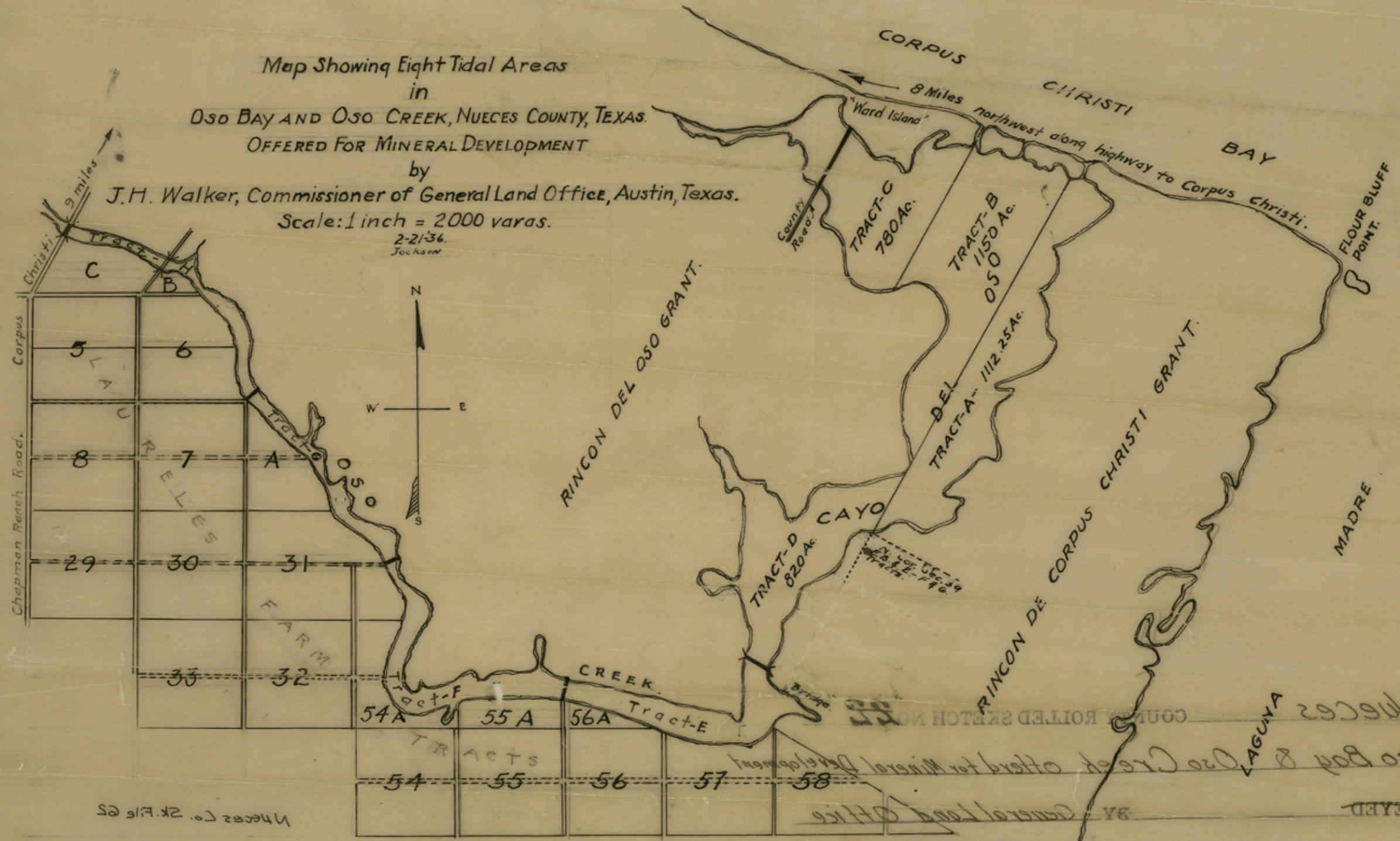


Map Showing Eight Tidal Areas
in
OSO BAY AND OSO CREEK, NUECES COUNTY, TEXAS.
OFFERED FOR MINERAL DEVELOPMENT

by
J.H. Walker, Commissioner of General Land Office, Austin, Texas.

Scale: 1 inch = 2000 varas.
2-21-36.
Jackson



copy 30 1/2

counter 38971

Nueces Co. SK File 62

FEB 1 1938

Nueces Co. SK File 62

SURVEYED BY General Land Office
Osso Bay & Osso Creek offered for Mineral Development
NUECES COUNTY ROLLED SKETCH NO. 22

