

Job No. 11119

P. O. BOX 6355, 2725 SWANTNER
CORPUS CHRISTI, TEXAS 78411 PHONE 854-3101

February 6, 1981

General Land Office
Austin, Texas 78701

Attn: Mr. Bob Armstrong, Commissioner

Report of survey of the shoreline boundary of a 5.50 acre tract of filled land on Tracts 24 and 134, as shown on Sheet No. 1, "Map of a part of Laguna Madre in Nueces and Kleberg Counties showing subdivision for mineral development" by Bascom Giles, Commissioner, General Land Office, November 1, 1948.

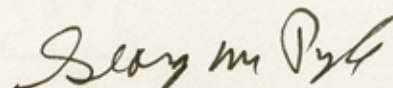
This report and the accompanying survey plat were prepared to accompany James E. Faris' application to lease the above 5.50 acres of land.

The 5.50 acres is submerged land which was filled with material from a boat channel which was dredged into the upland to the Northwest (see photo dated Nov. 1, 1967). This channel was dredged in the latter part of 1956 or early 1957. Robert M. Dunlap was the surveyor for the owner at that time and I have obtained from his fieldbook the location of the vegetation line and the 1.0 foot contour line from Point "C" to Point "D" as shown on the accompanying survey plat. The fieldbook notes are dated 7-22-56 and 7-31-56 and were notes prior to any fill being deposited.

On 1-21-81 I ran the 1.0' contour line (NGVD) and the vegetation line on the undisturbed shoreline to the south of the 5.5 acres from Point "A" to Point "B". These lines were connected to Dunlap's lines and produced a fairly straight shoreline which the accompanying photos show it to be. I set the shoreline at the vegetation line (elevation 1.6, NGVD).

I am enclosing the following:

Portion of Laguna Madre Subd. for mineral development.
Portion of Oso Creek, Texas, 1951 Quadrangle.
Aerial photograph dated Feb. 15, 1934, showing site before fill.
Aerial photograph dated Nov. 1, 1967 showing dredged channel and deposition of fill.


George M. Pyle, L.S.L.S.

GMP:ak
Enclosures

178-65-1

counter 32980



General Land Office

AUSTIN, TEXAS 78701
BOB ARMSTRONG, COMMISSIONER

February 19, 1981

Urban Engineering Company
P. O. Box 6355
Corpus Christi, Texas 78411

Attention: Mr. George Pyle

Re: Shoreline survey of a portion of
Tract 24 and 134 in Laguna Madre, Nueces
County, Urban Job No. 11119

Gentlemen:

In response to a report dated February 6, 1981, with exhibits, signed by George Pyle, Licensed State Land Surveyor, this office has reviewed the information and accepts the shoreline survey as shown on the plat for referenced job as the correct line between submerged lands belonging to the Public School Fund and uplands privately owned, based upon the elevation of 1.6 feet for Mean High Water.

The plat and pertinent data relating thereto have been filed as Nueces County Rolled Sketch No. 73.

Sincerely yours,

Herman Forbes
Director, Surveying Division

HF/dc

178-65-2

counter 32981

SHEET NO. I.

MAP OF A PART OF

LAGUNA MADRE

IN

NUECES AND KLEBERG COUNTIES

SHOWING

SUBDIVISION FOR MINERAL DEVELOPMENT

BY

BASCOM GILES COMMISSIONER GENERAL LAND OFFICE

AUSTIN TEXAS - NOV. 1, 1948 — SCALE · 1" = 1200 VARAS

COMPILED BY CURTIS R. HALE

TRACED BY J. M. L.

1" = 3,333'

count 132982

CT "B"

TRACT "D"

TRACT "E" - TRACT "F"

DEL TRACT "A" 1112.25 AC.

X=2,382,377.87
Y=729,821.48

BASE 3/8" GALV. IRON PIPE
X-2,379,469.00
Y-713,380.00

178-65-3

U.S. NAVAL STATION AIR

FLOUR BLUFF & ENCINAL FARM & GARDEN TRACTS

S 61° E. True Course
4 MILES

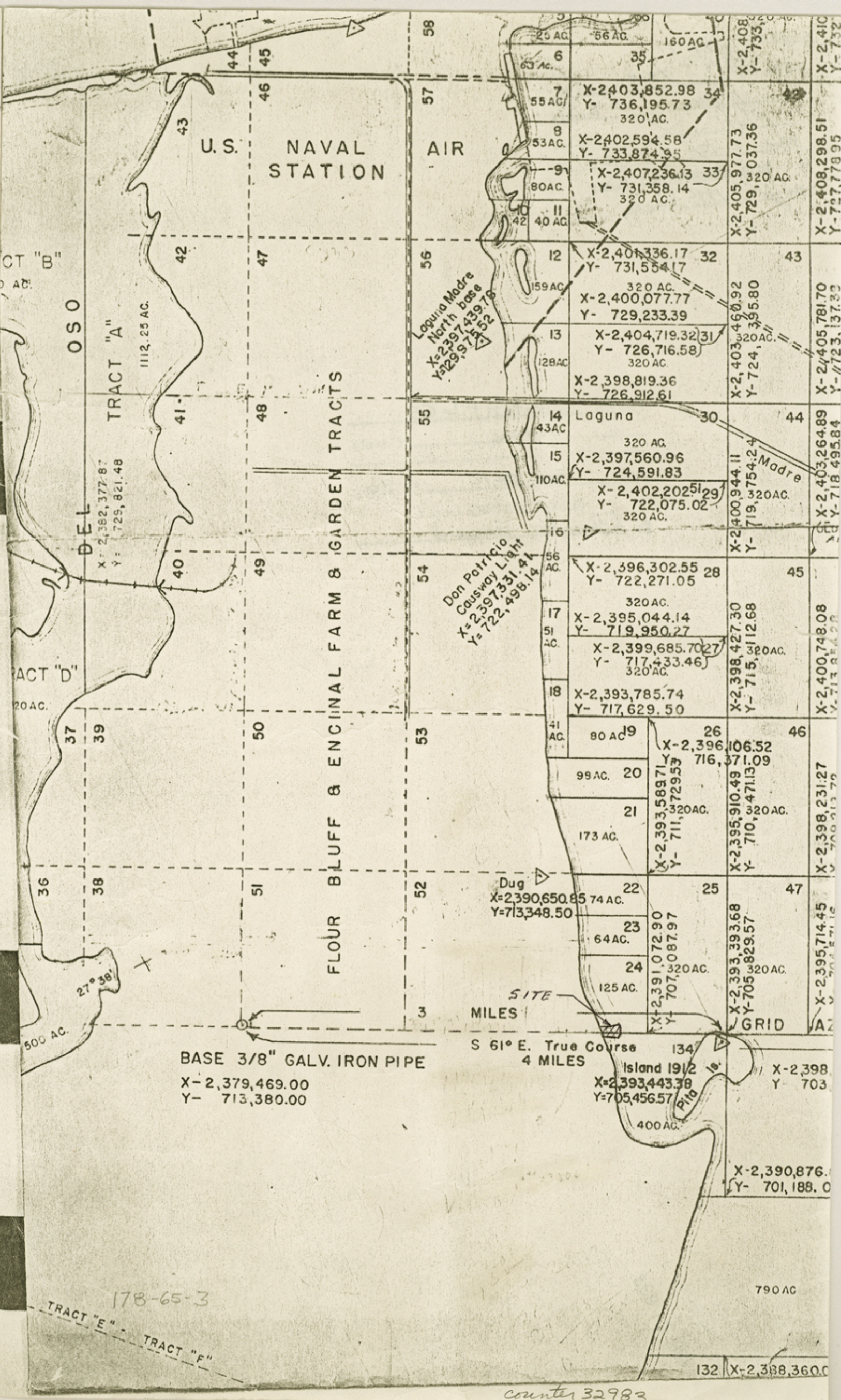
Island 19 1/2
X=2,393,443.38
Y=705,456.57

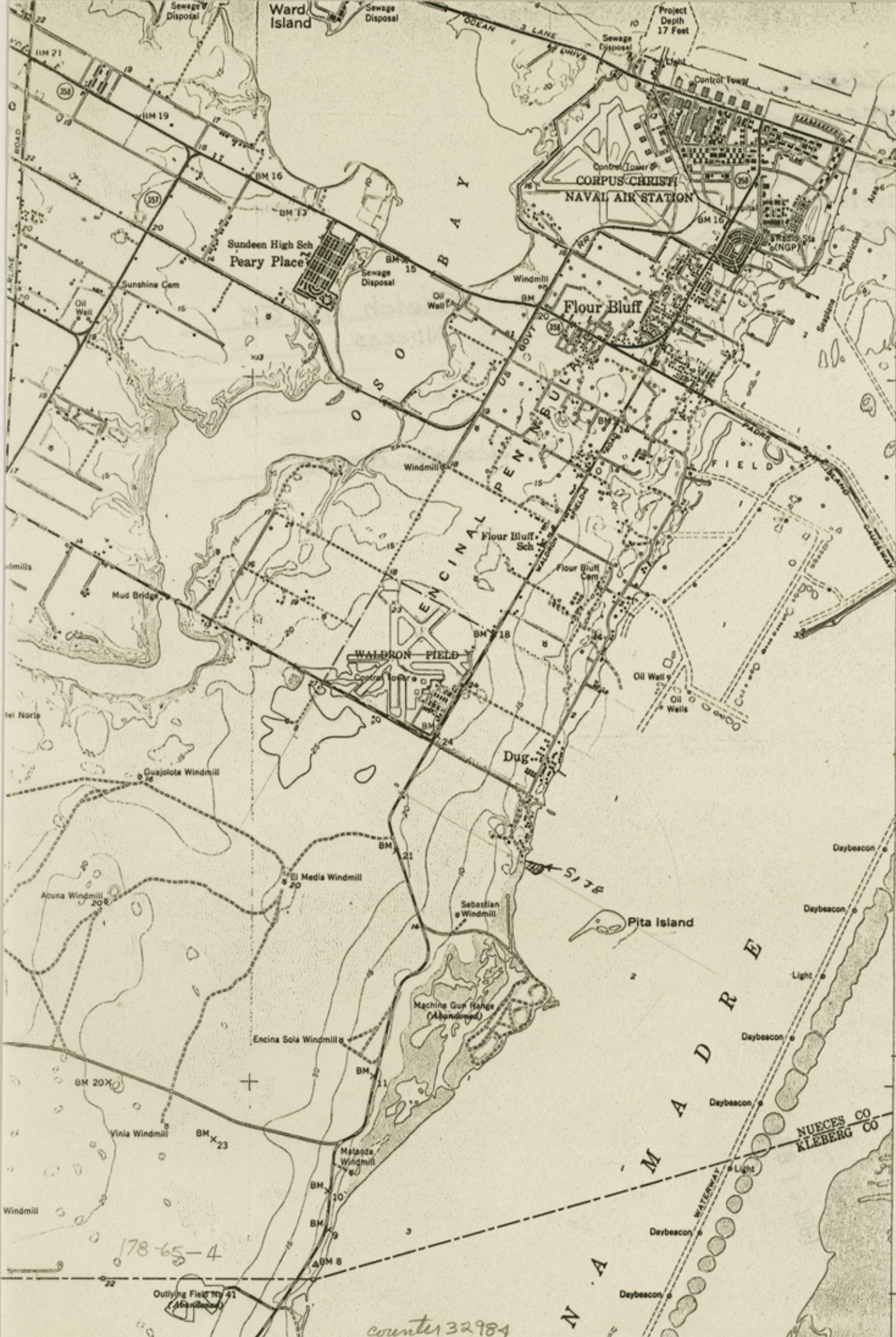
X-2,390,876.
Y-701,188.0

790 AC

X-2,388,360.0

counter 32983





178-65-4

counter 32984

OSD CREEK
TEXAS
1951
1:62500



count 32985

Q-228

Counter 32986

File No. 73-D

Nueces County

Aerial Photo of Area

Filed 2-12- 19 81

BOB ARMSTRONG, Com'r

By J. E. McCarty

FEB, 15, 1934

FLIGHT DATE

P. O. BOX 2101 SAN ANTONIO, TEXAS

TOBIN SURVEYS, INC.

PREPARED BY

File No. Sketch File 65

Nueces County

Filed Feb. 12 19 81

GARRY MAURO, Com'r

By Douglas Howard

178-65-5
3 - 2 1981

178-65-5

6228-14-220

SITE

Counter
32987

D-228

File No. 73-E

Nueces County

Photo of S. 50 Ac - Laguna Madre

Filed 2-12- 1981

BOB ARMSTRONG, Com'r

By J. E. McCarty

PREPARED BY

TOBIN SURVEYS, INC.

P. O. BOX 2101 SAN ANTONIO, TEXAS

FLIGHT DATE

NOV. 1, 1967

File No. Sketch File 65

Nueces County

Filed Feb. 12 1981

GARRY MAURO, Com'r

By Douglas Howard

003

178-65-6

counter 32988

FEB 12 1981

PROPERTY

General Land Office