

NO. 1



178-66-01

D-358

Counters 32989

NO. 2

1" = 2000'



0-39

178 66-82

Counter 32990

RODD FIELD (P-1) SHEET
NUECES COUNTY

No. 3
1" = 1000'

97°19'
27 1/2'

OSO

LAKE

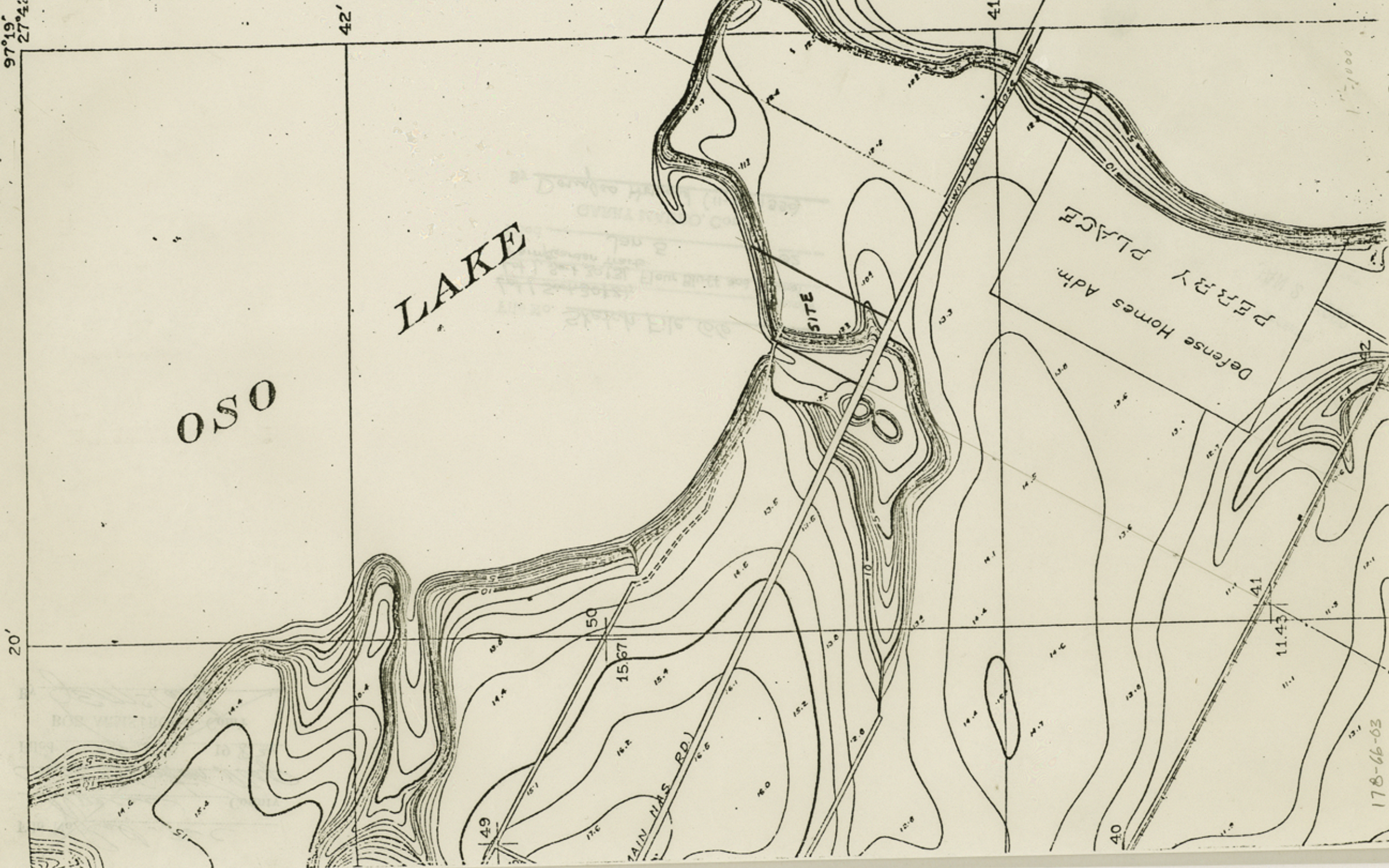
SITE

Defense Homes Adm.
PERBY PLACE

MAIN NAS. RD.

HI-WAY TO ADEL 1050

J. S. EADS
J. ARNIM
O. ENGR.



178-66-03
852-D

Counter 32991

U.S.C.&G.
X=2,398,
Y=740,8

U.S.C.&G.S. Collo

U.S. NAV
STAT

TRACT "C"
780 AC.

TRACT "B"
1150 AC.

TRACT "A"
1112.25 AC.

OSO

PADRE IS DRIFT

SITE

X=2,380,253.12
Y=730,979.85

X=2,382,377.67
Y=729,621.48

1" = 3333.33'

27°40'
97°20'

CUR. DEPTH 12'

SHEET NO. I.

MAP OF A PART OF

LAGUNA MADRE

IN

NUECES AND KLEBERG COUNTIES

SHOWING

SUBDIVISION FOR MINERAL DEVELOPMENT

BY

BASCOM GILES COMMISSIONER GENERAL LAND OFFICE

AUSTIN TEXAS - NOV. 1, 1948 - SCALE 1"=1200 VARAS

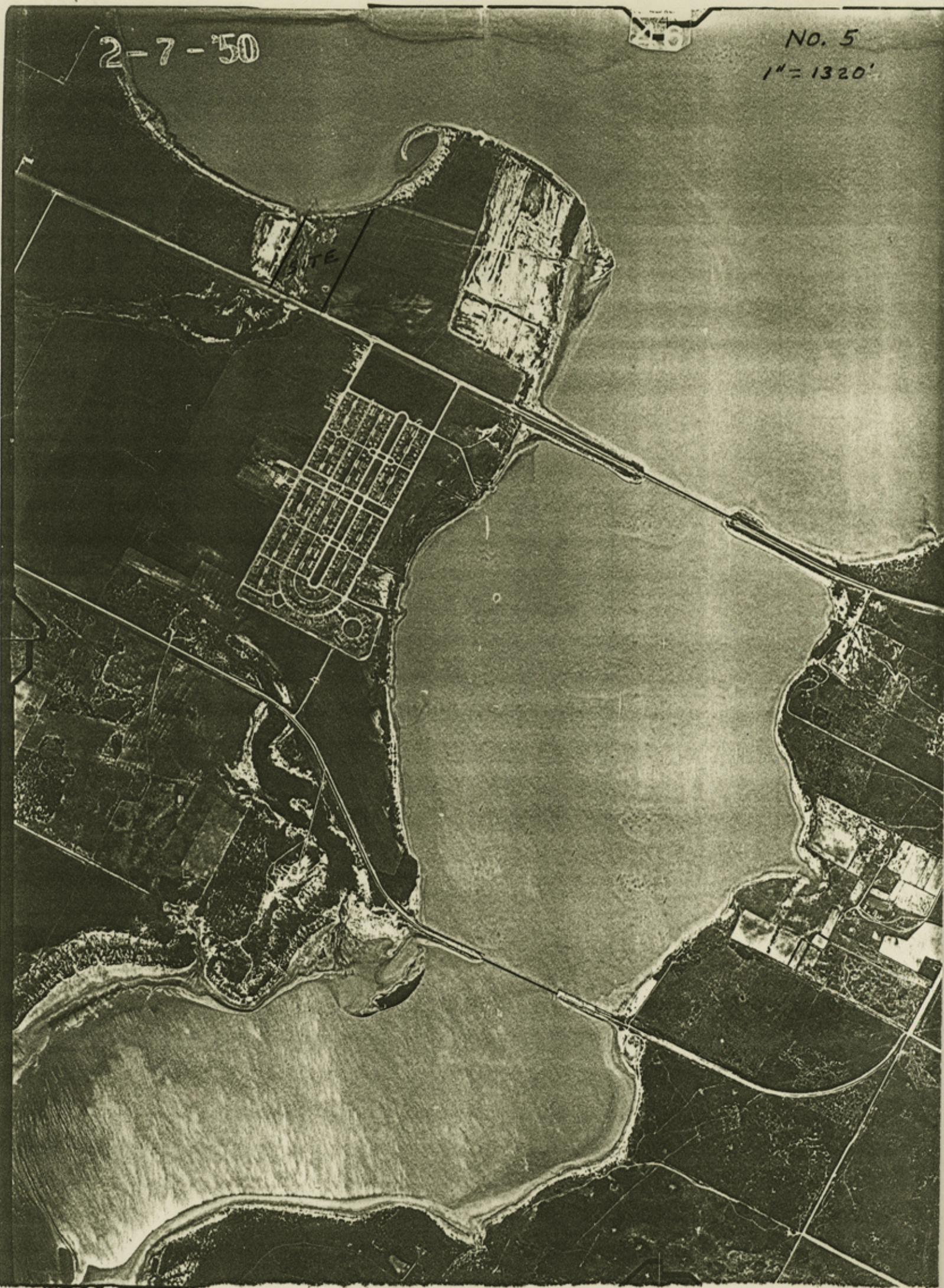
COMPILED BY GURTIS R. HALE

TRACED BY J.M.L.

2-7-'50

46

No. 5
1" = 1320'



178-66-05

D-398

counter 32993

1-16-56

46

NO. 6
1" = 1320'



178-66-66

D-398

Counter 32994

2-3-61

No. 7
1"=1320'



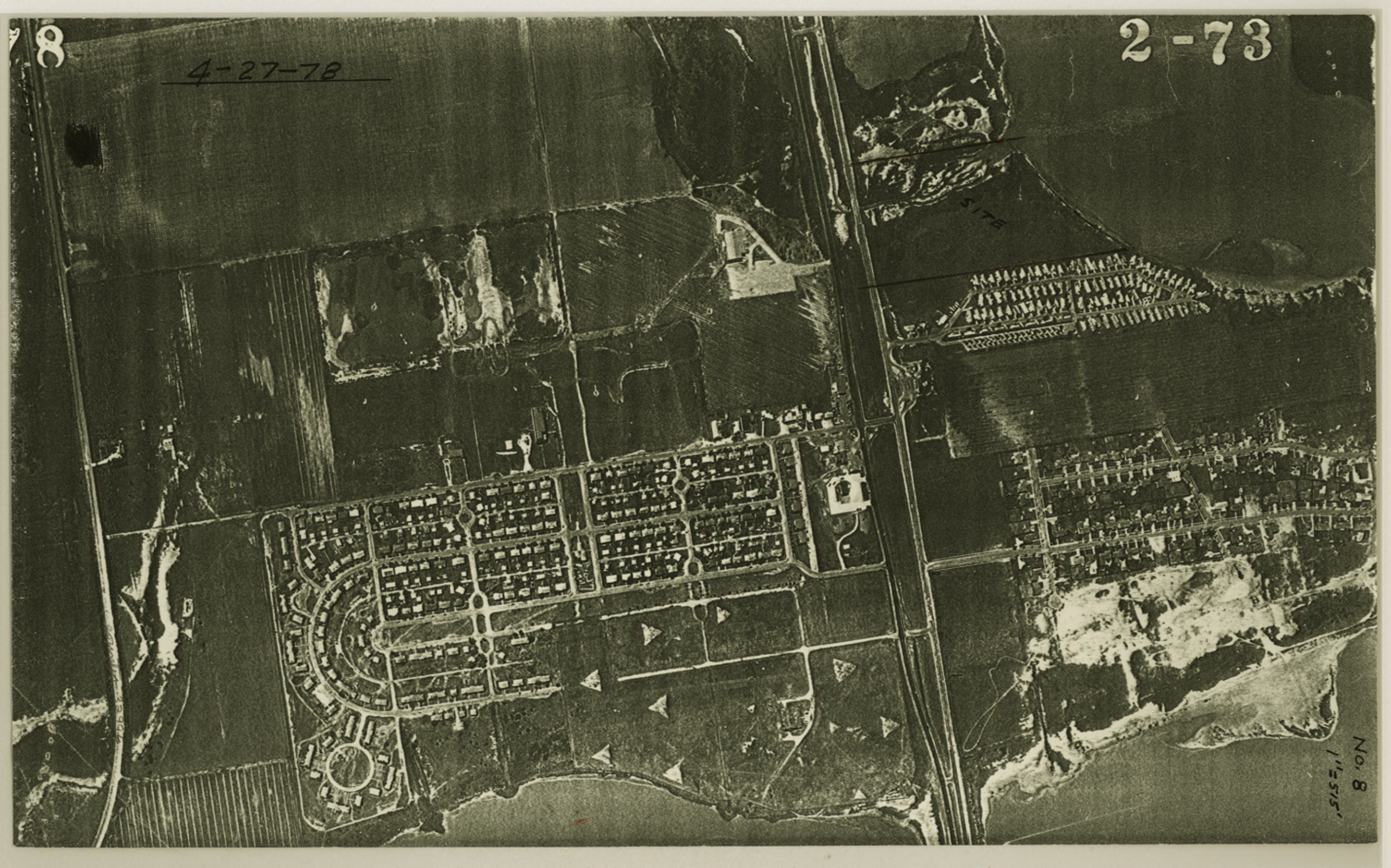
178-66-07
D-398

counter 32995

8

4-27-78

2-73



No. 8
11515'

~~76-H
File No. Valid-76-H
: Nueces - County
: Photo
Filed 1-5- 19 82
BOB ARMSTRONG, Com'r
By JEM-clark~~



File No. Sketch File 66
Nueces County
Lot 1, Sect. 30 & 31 Flour Bluff & Encinal
Farm & Garden Tracts
Filed Jan. 5 19 82
GARRY MAURO, Com'r
By Douglas Howard (11-30-1990)

RECEIVED
JAN 2 1982
General Land Office

Counter 32997